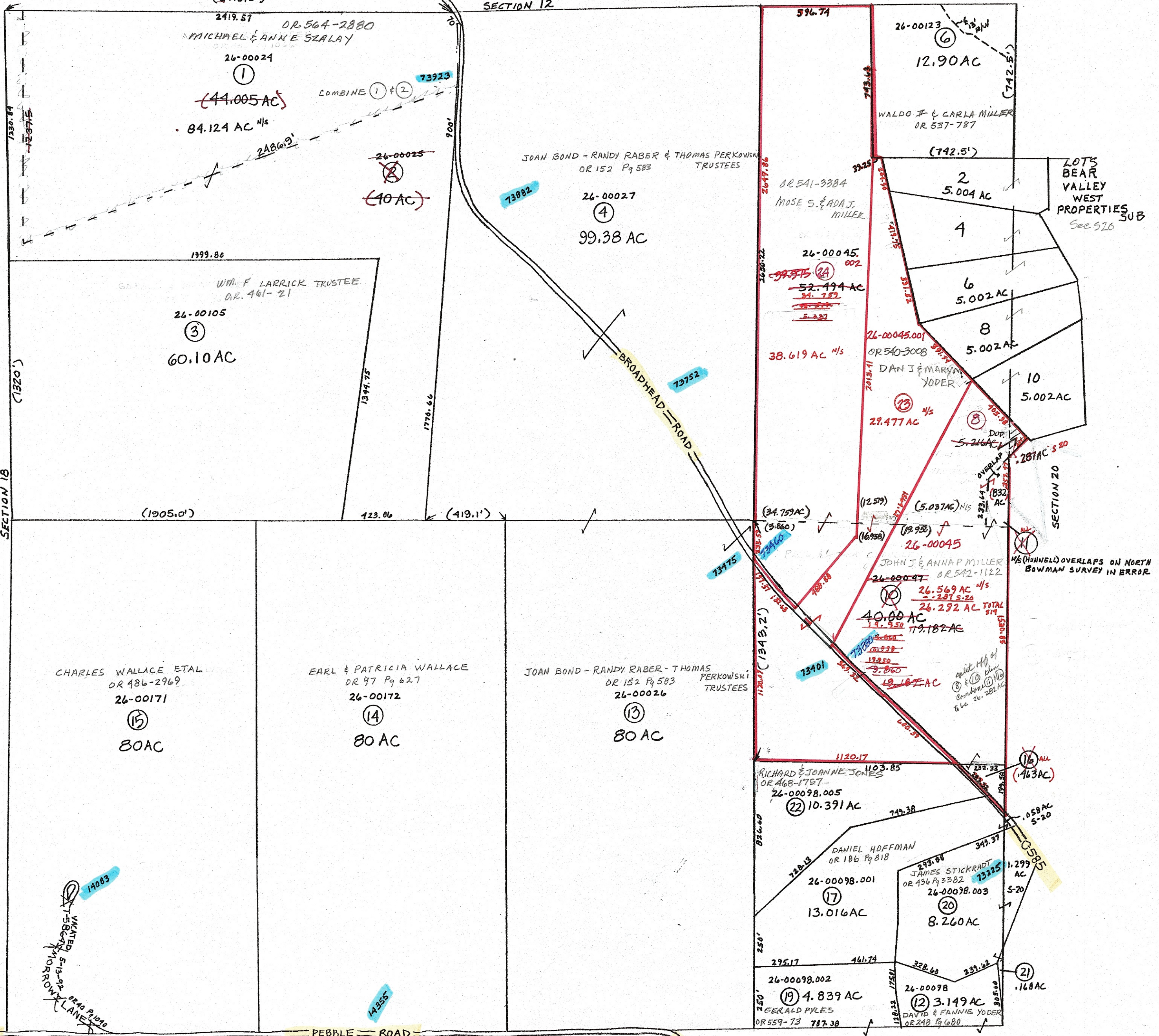


74000

SECTION 12



73000

SECTION 22

- ① 26-01160 OR 417 Pg 253 PAUL & ALMA CHANDLER TRUSTEES
- ② 26-00047.001 OR 417 Pg 203 PAUL & ALMA CHANDLER TRUSTEES
- ③ 26-00098.004 OR 432 Pg 3382 JAMES STICKRADT

PRELIMINARY
 MAPS IN THIS OFFICE ARE
 FOR TAX PURPOSES
 ONLY-VERIFY INFO. BY DEED RECORDS

29

DISTANCES IN PARENTHESES ARE BY DEED, NOT BY SURVEY

DELMAR E. GEORGE
 County Engineer

HOWARD R KING
 cartographer

MER 4-07 Revised

Aerial Photo
 OLD 3-G-94

TAX MAP
MONROE TOWNSHIP
GUERNSEY COUNTY OHIO

Range	Twp	
2	4	S19

scale 1" = 400'