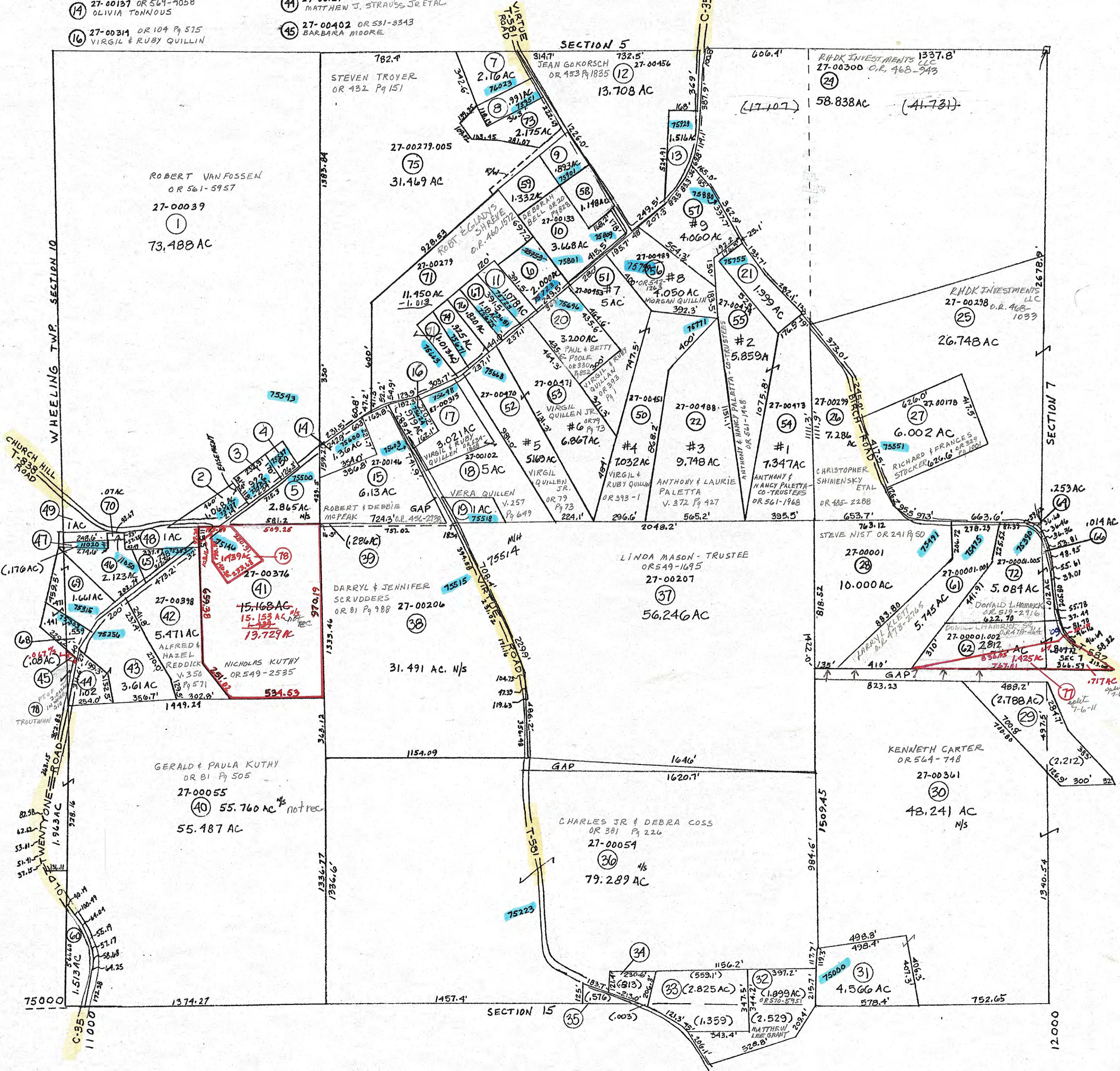


- ② 27-00139 O.R. 510-1004 ERIC & DEVANEY PHILLIPS
- ③ 27-00114 O.R. 311 P. 501 DONALD & CHARLOTTE WRIGHT
- ④ 27-00097 O.R. 343 P. 370 FRANKLIN & CATHY GADD
- ⑤ 27-00119 O.R. 570-891 ALYSA RICE & JOSEPH McCLELLAND
- ⑥ 27-00277.002 O.R. 496-1756 DOUGLAS BELL
- ⑦ 27-00130 O.R. 6 P. 102 SUSAN SLASOR
- ⑧ 27-00101 V. 383 P. 1081 SAMUEL & TAMMY GULICK
- ⑨ 27-00282 O.R. 452 P. 2026 KENNETH JR & DEBORA MARTHEY
- ⑩ 27-00128 O.R. 507-557 DOUGLAS BELL
- ⑪ 27-00281 O.R. 59 P. 146 JOHN CASEY
- ⑫ 27-00137 O.R. 569-4058 OLIVIA TONNOUS
- ⑬ 27-00314 O.R. 104 P. 575 VIRGIL & RUBY QUILLEN

- ⑭ 27-00075 V. 356 P. 842 DONNA POOLE
- ⑮ 27-00085 O.R. 432 P. 1224 TRACY THOMAS
- ⑯ 27-00362 O.R. 484-2509 JAMES & JOYCE ORT
- ⑰ 27-00070 O.R. 564-748 KENNETH CARTER
- ⑱ 27-00431 O.R. 566-5394 DEBRA BOYKEN
- ⑲ 27-00444 O.R. 203 P. 122 WAYNE EDGERTON
- ⑳ 27-00445 V. 346 P. 990 TENNESSEE GAS PIPELINE
- ㉑ 27-00292 O.R. 568-4681 STEVEN MOEGLIN - TRUSTEE
- ㉒ 27-00105 O.R. 81 P. 988 DARRYL & JENNIFER SCRUDDEES
- ㉓ 27-00132 V. 450 P. 749 MATTHEW J STRAUSS JR. ETAL
- ㉔ 27-00131 V. 480 P. 749 MATTHEW J. STRAUSS JR. ETAL
- ㉕ 27-00402 O.R. 531-3343 BARBARA MOORE

- ⑳ 27-00403 O.R. 558-1243 BRANDON & JENNIFER MILLER
- ㉑ 27-00242 V. 321 P. 154 FLATRIDGE MENNONITE CHURCH
- ㉒ V. 104 P. 554 26-01952 TRUSTEES UP CHURCH
- ㉓ V. 28 P. 396 FLATRIDGE MENNONITE CHURCH
- ㉔ 27-00490 V. 360 P. 819 LORETT ROESER
- ㉕ 27-00282.001 O.R. 20 P. 828 DEBORAH BELL
- ㉖ 27-00133.001 O.R. 452 P. 2026 KENNETH JR & DEBORA MARTHEY
- ㉗ 27-00055.001 O.R. 79 P. 425 GERALD JR & PAULA KUTHY
- ㉘ 27-00001.003 O.R. 319-542 JEFFREY & PAULA POWERS
- ㉙ 27-00403.001 O.R. 88 P. 683 TRUSTEES OF MONROE TWP.

- ⑳ 27-00001.004 O.R. 109 P. 867 CHRISTINE & FREEMAN SEBECK
- ㉑ 27-00277.001 O.R. 540-3326 LARRY PEOPLES JR
- ㉒ 27-00403.002 O.R. 558-1243 BRANDON & JENNIFER MILLER
- ㉓ 27-00403.003 O.R. 558-1243 BRANDON & JENNIFER MILLER
- ㉔ 27-00242.001 O.R. 558-1243 BRANDON & JENNIFER MILLER
- ㉕ 27-00279.004 O.R. 288 P. 391 SAMUEL GULICK
- ㉖ 27-00279.003 O.R. 287 P. 391 WILLIAM & JUDY WYNN
- ㉗ 27-00279.006 O.R. 369 P. 731 WILLIAM & JUDY WYNN
- ㉘ 27-00002.006 O.R. 480-1746 JAS R JOYCE A ORT CO-TRUSTEES
- ㉙ 27-00376.001 O.R. 565-3078 DENNIS D & PATTY A THURSBY



PRELIMINARY
 MAPS IN THIS OFFICE ARE
 FOR TAX PURPOSES
 ONLY-VERIFY INFO. BY DEED RECORDS