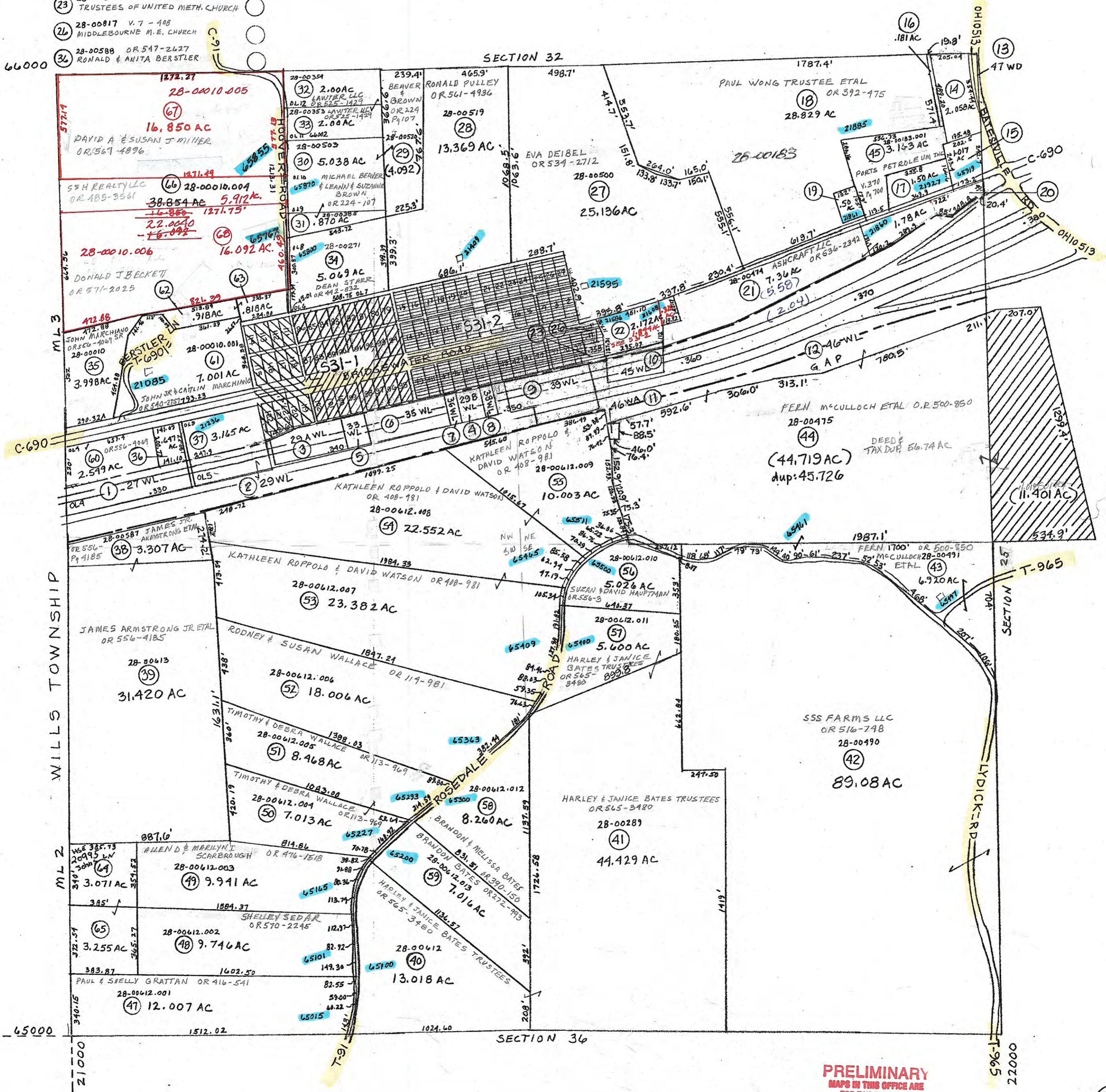


- 14 28-00314 OR 384-673 JOND PROPERTIES LLC
- 15 28-00134 OR 384-675 MIDWAY PROPERTIES LLC
- 16 28-00184 OR 392-175 PAUL WONG TRUSTEE ETAL
- 17 28-00161 V. 370-135 PORTS PETROLEUM INC
- 18 28-00215 OR 570-3834 PORTS PETROLEUM CO. INC
- 19 28-00276 OR 536-2342 ASHCRAFT LLC
- 20 28-00189 OR 512-470 OHIO GATHERING CO. LLC
- 21 28-00817 V. 362-66 TRUSTEES OF UNITED METH. CHURCH
- 22 28-00817 V. 7-488 MIDDLEBOURNE M.E. CHURCH
- 23 28-00588 OR 547-2427 RONALD & ANITA BERSTLER
- 24 28-00194 OR 194-947 GUE. CO. COMMISSIONERS
- 25 28-00183.001 V. 370-700 PORTS PETROLEUM INC
- 26 28-00588.001 OR 556-4069 JOHN MARCHIANO SR
- 27 28-00010.002 OR 556-4669 JOHN MARCHIANO SR.
- 28 28-00010.003 OR 556-4069 JOHN MARCHIANO SR.
- 29 28-00612.014 OR 330-1105 JAY McCULLOCH
- 30 28-00612.015 OR 356-632 JAY McCULLOCH
- 31 28-00354 2.00 AC BEAVER RONALD PULLEY OR 541-4936
- 32 28-00503 5.038 AC MICHAEL BEAVER
- 33 28-00271 5.069 AC DEAN STARR
- 34 28-00010.000 7.001 AC JOHN OR CATLIN MARCHIANO
- 35 28-00010.000 3.998 AC JOHN MARCHIANO OR 540-2137
- 36 28-00010.000 2.599 AC JOHN MARCHIANO OR 540-2137
- 37 28-00010.000 3.165 AC JOHN MARCHIANO OR 540-2137
- 38 28-00010.000 3.307 AC JAMES ARMSTRONG JR ETAL OR 556-4185
- 39 28-00613 31.420 AC JAMES ARMSTRONG JR ETAL OR 556-4185
- 40 28-00612.006 18.006 AC RODNEY & SUSAN WALLACE OR 117-981
- 41 28-00612.011 5.400 AC HARLEY & JANICE BATES TRUSTEES OR 565-3480
- 42 28-00490 89.08 AC SSS FARMS LLC OR 516-748
- 43 28-00612.012 8.260 AC HARLEY & JANICE BATES TRUSTEES OR 565-3480
- 44 28-00475 (44.719 AC) dup: 45.726 FERN McCULLOCH ETAL OR 500-850
- 45 28-00612.010 5.026 AC SUZAN DAVID HAUPTMAN OR 556-3
- 46 28-00612.007 23.382 AC KATHLEEN ROPPOLO & DAVID WATSON OR 488-981
- 47 28-00612.005 8.468 AC TIMOTHY & DEBRA WALLACE OR 113-969
- 48 28-00612.004 7.013 AC TIMOTHY & DEBRA WALLACE OR 113-969
- 49 28-00612.003 9.941 AC ALLEN & MARIYKI SCARBROUGH OR 476-1518
- 50 28-00612.002 9.746 AC SHELLEY SEDAR OR 570-2245
- 51 28-00612.001 12.007 AC PAUL & SHELLEY GRATTAN OR 416-541
- 52 28-00612.000 13.018 AC HARLEY & JANICE BATES TRUSTEES OR 565-3480
- 53 28-00612.000 7.016 AC BRANDON & MELISSA BATES OR 565-3480
- 54 28-00612.000 8.260 AC HARLEY & JANICE BATES TRUSTEES OR 565-3480
- 55 28-00612.000 5.026 AC SUZAN DAVID HAUPTMAN OR 556-3
- 56 28-00612.000 5.400 AC HARLEY & JANICE BATES TRUSTEES OR 565-3480
- 57 28-00612.000 5.026 AC SUZAN DAVID HAUPTMAN OR 556-3
- 58 28-00612.000 5.026 AC SUZAN DAVID HAUPTMAN OR 556-3
- 59 28-00612.000 7.016 AC BRANDON & MELISSA BATES OR 565-3480
- 60 28-00612.000 8.260 AC HARLEY & JANICE BATES TRUSTEES OR 565-3480
- 61 28-00612.000 9.941 AC ALLEN & MARIYKI SCARBROUGH OR 476-1518
- 62 28-00612.000 9.746 AC SHELLEY SEDAR OR 570-2245
- 63 28-00612.000 12.007 AC PAUL & SHELLEY GRATTAN OR 416-541
- 64 28-00612.000 13.018 AC HARLEY & JANICE BATES TRUSTEES OR 565-3480
- 65 28-00612.000 13.018 AC HARLEY & JANICE BATES TRUSTEES OR 565-3480
- 66 28-00612.000 13.018 AC HARLEY & JANICE BATES TRUSTEES OR 565-3480
- 67 28-00612.000 16.850 AC DAVID A & SUSAN J MILLER OR 567-4896
- 68 28-00612.000 16.092 AC DONALD J BECKETT OR 571-2025
- 69 28-00612.000 38.854 AC 55H REALTY LLC OR 485-3561
- 70 28-00612.000 13.369 AC EVA DEIBEL OR 534-2712
- 71 28-00612.000 25.136 AC EVA DEIBEL OR 534-2712
- 72 28-00612.000 13.369 AC EVA DEIBEL OR 534-2712
- 73 28-00612.000 13.369 AC EVA DEIBEL OR 534-2712
- 74 28-00612.000 13.369 AC EVA DEIBEL OR 534-2712
- 75 28-00612.000 13.369 AC EVA DEIBEL OR 534-2712
- 76 28-00612.000 13.369 AC EVA DEIBEL OR 534-2712
- 77 28-00612.000 13.369 AC EVA DEIBEL OR 534-2712
- 78 28-00612.000 13.369 AC EVA DEIBEL OR 534-2712
- 79 28-00612.000 13.369 AC EVA DEIBEL OR 534-2712
- 80 28-00612.000 13.369 AC EVA DEIBEL OR 534-2712
- 81 28-00612.000 13.369 AC EVA DEIBEL OR 534-2712
- 82 28-00612.000 13.369 AC EVA DEIBEL OR 534-2712
- 83 28-00612.000 13.369 AC EVA DEIBEL OR 534-2712
- 84 28-00612.000 13.369 AC EVA DEIBEL OR 534-2712
- 85 28-00612.000 13.369 AC EVA DEIBEL OR 534-2712
- 86 28-00612.000 13.369 AC EVA DEIBEL OR 534-2712
- 87 28-00612.000 13.369 AC EVA DEIBEL OR 534-2712
- 88 28-00612.000 13.369 AC EVA DEIBEL OR 534-2712
- 89 28-00612.000 13.369 AC EVA DEIBEL OR 534-2712
- 90 28-00612.000 13.369 AC EVA DEIBEL OR 534-2712
- 91 28-00612.000 13.369 AC EVA DEIBEL OR 534-2712
- 92 28-00612.000 13.369 AC EVA DEIBEL OR 534-2712
- 93 28-00612.000 13.369 AC EVA DEIBEL OR 534-2712
- 94 28-00612.000 13.369 AC EVA DEIBEL OR 534-2712
- 95 28-00612.000 13.369 AC EVA DEIBEL OR 534-2712
- 96 28-00612.000 13.369 AC EVA DEIBEL OR 534-2712
- 97 28-00612.000 13.369 AC EVA DEIBEL OR 534-2712
- 98 28-00612.000 13.369 AC EVA DEIBEL OR 534-2712
- 99 28-00612.000 13.369 AC EVA DEIBEL OR 534-2712
- 100 28-00612.000 13.369 AC EVA DEIBEL OR 534-2712



PRELIMINARY
 MAPS IN THIS OFFICE ARE
 FOR TAX PURPOSES
 ONLY-VERIFY INFO. BY DEED RECORDS

(21)

DELMAR E. GEORGE County Engineer TONY BROWN County Auditor	HOWARD R KING cartographer JBS '83 Drawn	RMD 11/05 Revised MER 10/08	Aerial Photo 1-G-58,60 OLD T-G-14 NEW #75	TAX MAP OXFORD TOWNSHIP GUERNSEY COUNTY OHIO scale 1" = 400'	Range 7	Twp 10	531
---	---	--------------------------------	--	--	------------	-----------	-----