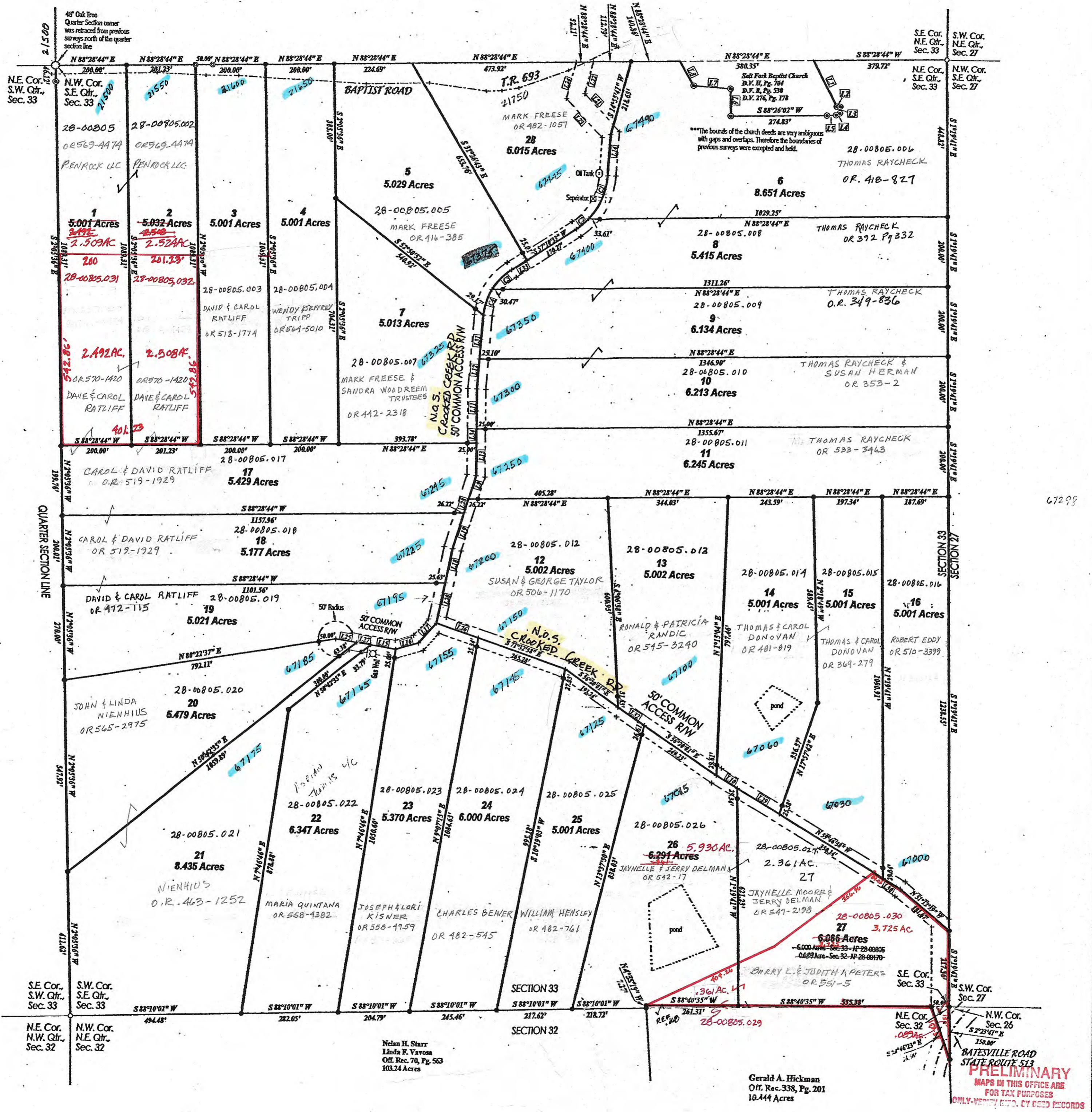


BAPTIST ROAD PROPERTY

SLIDE 477



DELMAR E. GEORGE
County Engineer
TONY BROWN
County Auditor

MARY RIEDERER
Cartographer
12-02
Drawn

Revised

Aerial Photo

TAX MAP
OXFORD TWP.
GUERNSEY COUNTY OHIO
scale 1" = 200'

Range	Twp
7 10	S 33-1

7