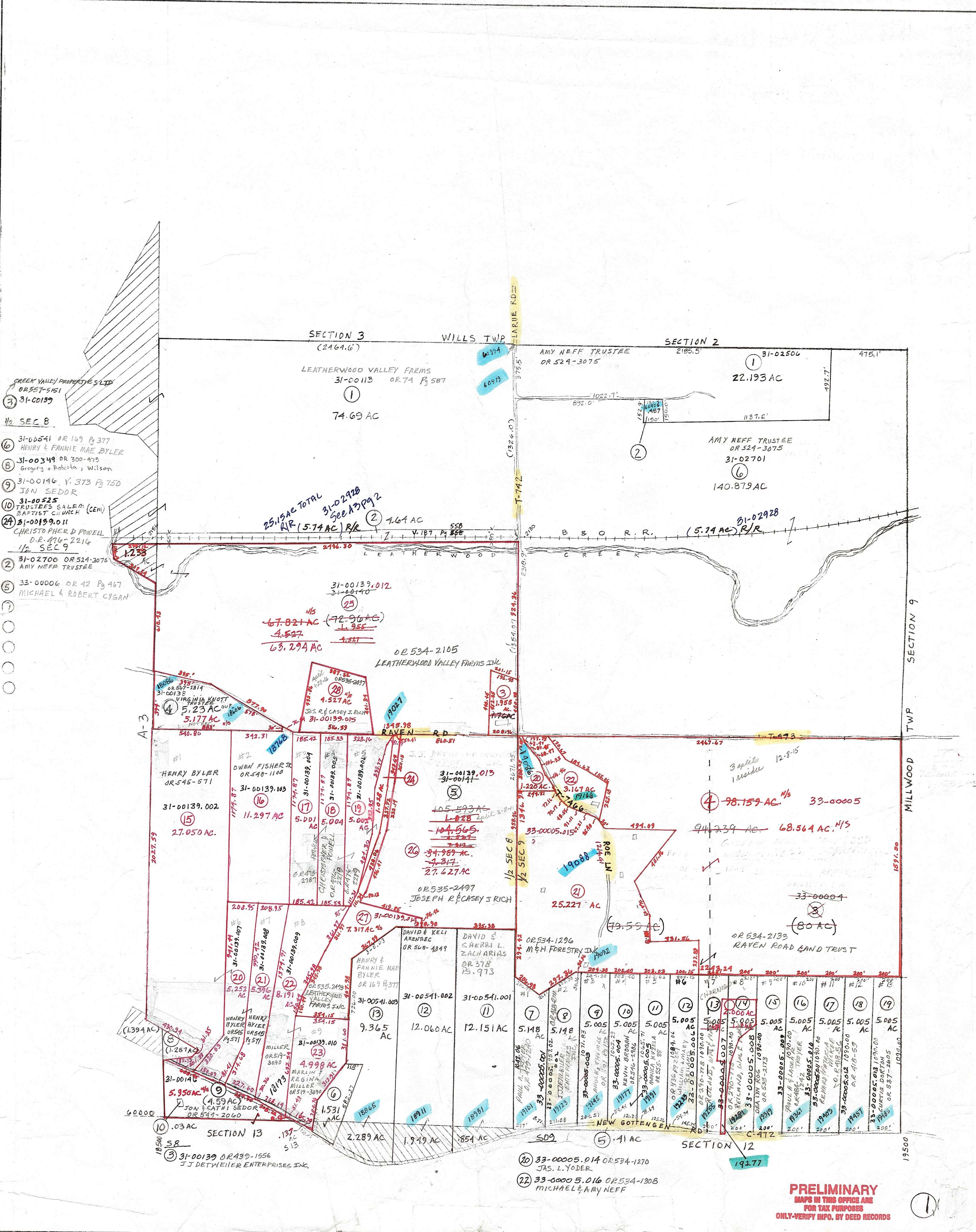


2500



PRELIMINARY
 MAPS IN THIS OFFICE ARE
 FOR TAX PURPOSES
 ONLY-VERIFY INFO. BY DEED RECORDS

DELMAR E. GEORGE County Engineer TONY BROWN County Auditor	HOWARD R KING cartographer JRS 281 Drawn	7-2000 MER. Revised	Aerial Photo 1-G-113 1-G-115 1-G-74	TAX MAP RICHLAND TOWNSHIP GUERNSEY COUNTY OHIO scale 1" = 400'	DISTANCES IN PARENTHESES ARE BY DEED	Range TWP 1 1 1/2 S8, 1/2 S9
---	--	---------------------	--	--	--------------------------------------	---------------------------------