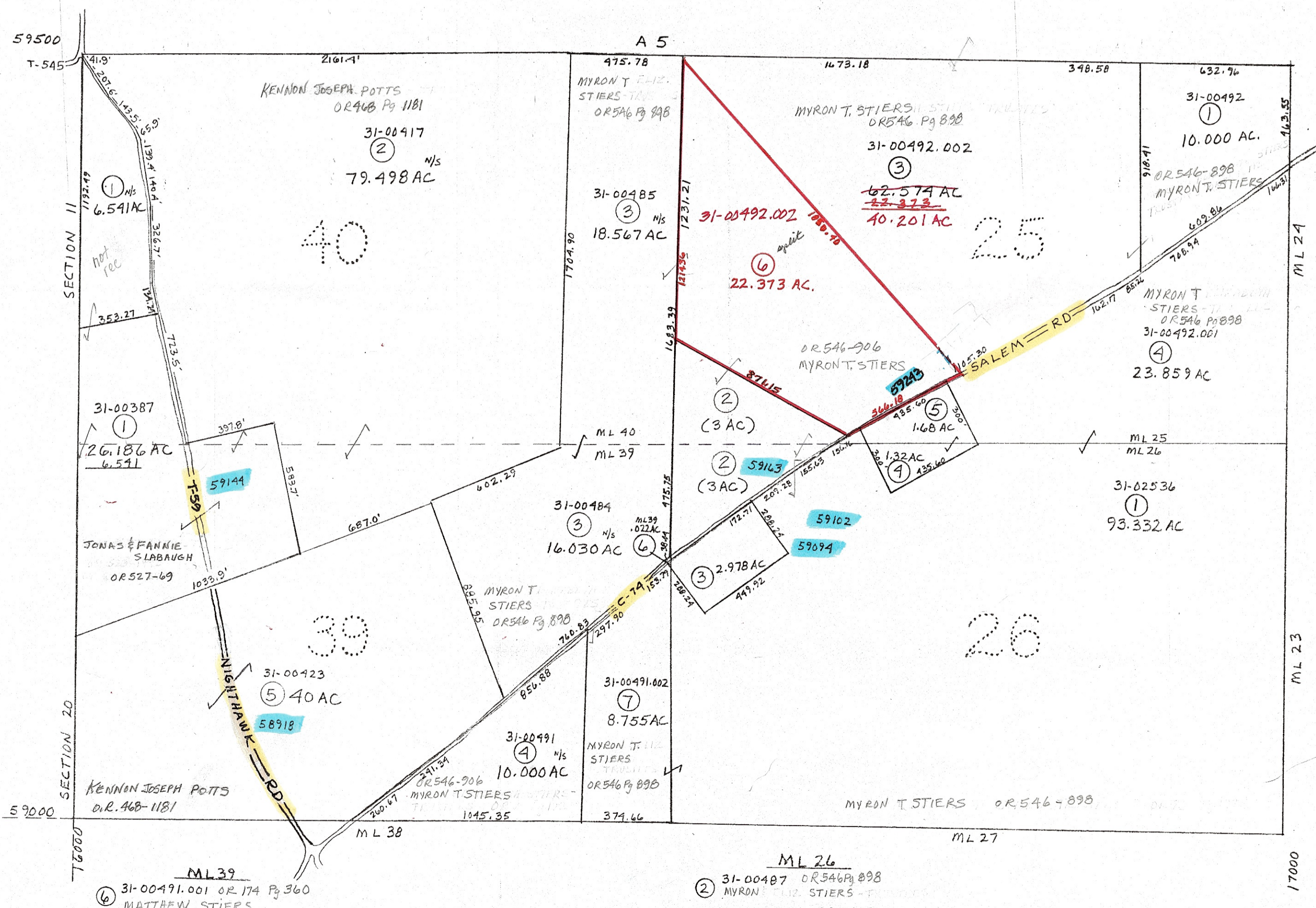


ML 25

- ② 31-00486 OR 546 Pg 898
MYRON T. STIERS
- ⑤ 31-00492.003 OR 35 Pg 880
RICHARD & ELIZABETH CHUMNEY



ML 26

- ② 31-00487 OR 546 Pg 898
MYRON T. STIERS
- ③ 31-02536.001 OR 174 Pg 360
MATTHEW STIERS
- ④ 31-02536.002 OR 35 Pg 880
RICHARD & ELIZABETH CHUMNEY

PRELIMINARY
MAPS IN THIS OFFICE ARE
FOR TAX PURPOSES
ONLY-VERIFY INFO. BY DEED RECORDS

12

DELMAR E. GEORGE County Engineer TONY BROWN County Auditor	HOWARD R KING cartographer JBS '81 Drawn	MER 7-2000 Revised	Aerial Photo 2-9-96 1-9-115	scale 1" = 400'	TAX MAP RICHLAND TOWNSHIP GUERNSEY COUNTY OHIO	Range	Twp	ML 40, 25 39, 25
						1	1	