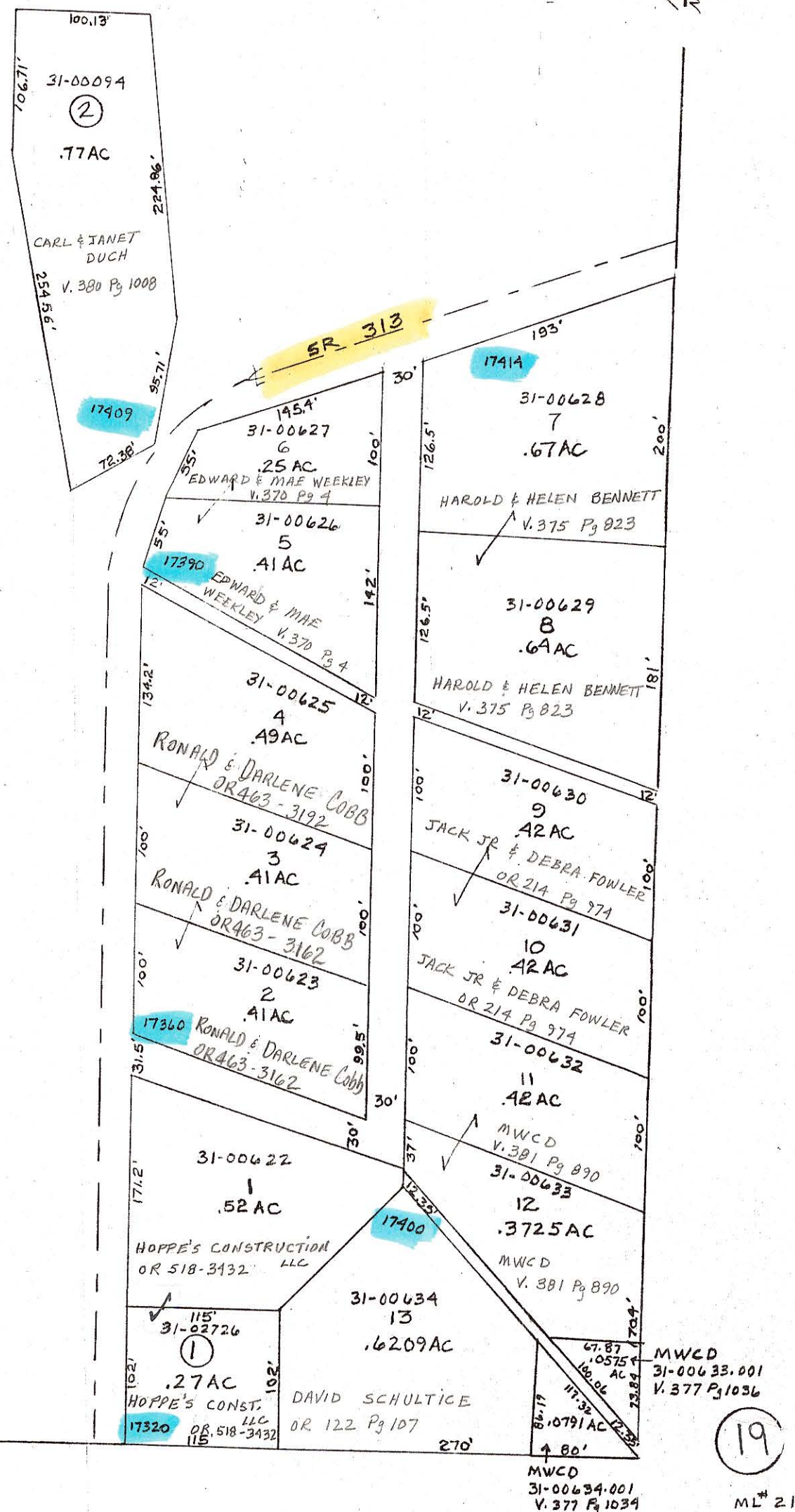


MILITARY LOT 22
MILITARY LOT 21

MILITARY LOT 21
MILITARY LOT 12

1.721 AC



MILITARY LOT 21
MILITARY LOT 20

PRELIMINARY
MAPS IN THIS OFFICE ARE
FOR TAX PURPOSES
ONLY-VERIFY INFO. BY DEED RECORDS

ML# 21

DELMAR E. GEORGE
County Engineer
TONY BROWN
County Auditor

HOWARD R KING
cartographer
JEB '77
Drawn

Revised
RMD 11/85
MER 8-2000

Aerial Photo

TAX MAP
RICHLAND TWP - DUCH'S SUBDIV.
scale 1"=100' GUERNSEY COUNTY OHIO

Range 1 Twp 1 ML21-1