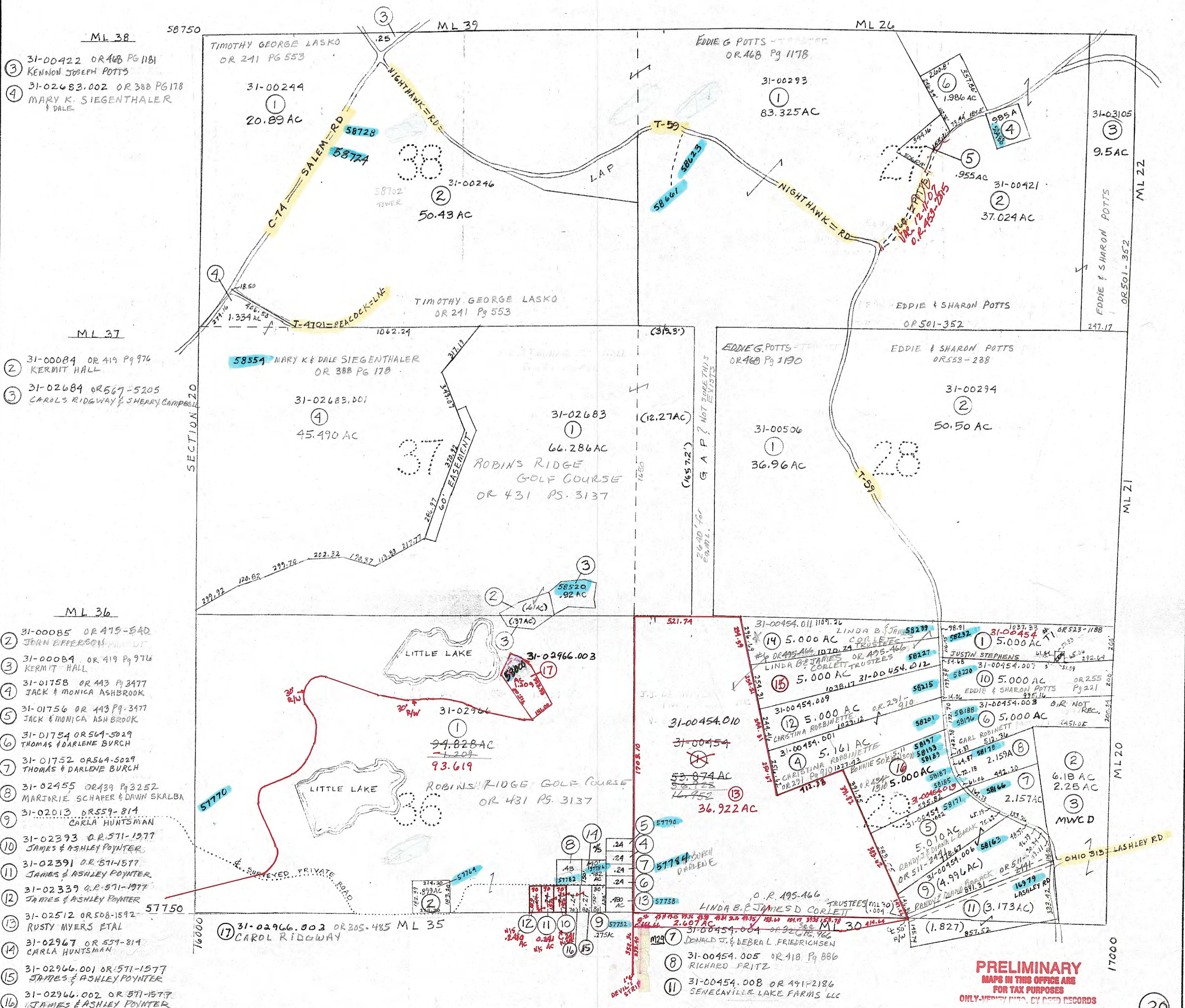


ML 27

- ④ 31-00353 OR 501-355  
EDDIE & SHARON POTTS
- ⑤ 31-00293.001 OR 501-355  
EDDIE & SHARON POTTS
- ⑥ 31-00421.001 OR 501-355  
EDDIE & SHARON POTTS



- ML 38
- ③ 31-00422 OR 468 Pg 1181  
KENNOR JOSEPH POTTS
  - ④ 31-02683.002 OR 388 Pg 178  
MARY K. SIEGENTHALER  
DALE
- ML 37
- ② 31-00084 OR 419 Pg 976  
KERMIT HALL
  - ③ 31-02684 OR 567-5205  
CAROL RIDGWAY & SHERRY CAMPBELL
- ML 36
- ② 31-00085 OR 475-540  
JOHN EPPERSON
  - ③ 31-00084 OR 419 Pg 976  
KERMIT HALL
  - ④ 31-01758 OR 443 Pg 3477  
JACK & MONICA ASHBROOK
  - ⑤ 31-01756 OR 443 Pg 3477  
JACK & MONICA ASHBROOK
  - ⑥ 31-01754 OR 564-5029  
THOMAS DARLENE BURCH
  - ⑦ 31-01752 OR 564-5029  
THOMAS DARLENE BURCH
  - ⑧ 31-02455 OR 439 Pg 3252  
MARTORIE SCHAPER & DAWN SKALBA
  - ⑨ 31-02013 OR 559-814  
CARLA HUNTSMAN
  - ⑩ 31-02393 OR 571-1977  
JAMES & ASHLEY POINTNER
  - ⑪ 31-02391 OR 571-1577  
JAMES & ASHLEY POINTNER
  - ⑫ 31-02339 OR 571-1977  
JAMES & ASHLEY POINTNER
  - ⑬ 31-02512 OR 508-1592  
RUSTY MYERS ETAL
  - ⑭ 31-02967 OR 579-814  
CARLA HUNTSMAN
  - ⑮ 31-02966.001 OR 571-1577  
JAMES & ASHLEY POINTNER
  - ⑯ 31-02966.002 OR 571-1577  
JAMES & ASHLEY POINTNER

**PRELIMINARY**  
MAPS IN THIS OFFICE ARE  
FOR TAX PURPOSES  
ONLY. VERIFY INFO. BY DEED RECORDS

<b>DELMAR E. GEORGE</b> County Engineer  <b>TONY BROWN</b> County Auditor	<b>HOWARD R KING</b> cartographer  <b>JBS '81</b> Drawn	Revised RMD 11/85 MER 10-2000	Aerial Photo 2-G-94-NW 2-G-96-NW 1-G-117-SE 1-G-115-NE	<b>TAX MAP</b> <b>RICHLAND TOWNSHIP</b> <b>GUERNSEY COUNTY OHIO</b> scale 1" = 400'	Range Twp 1 1 ML 38, 27 37, 28 36, 29
---	---	-------------------------------------	--	--	---