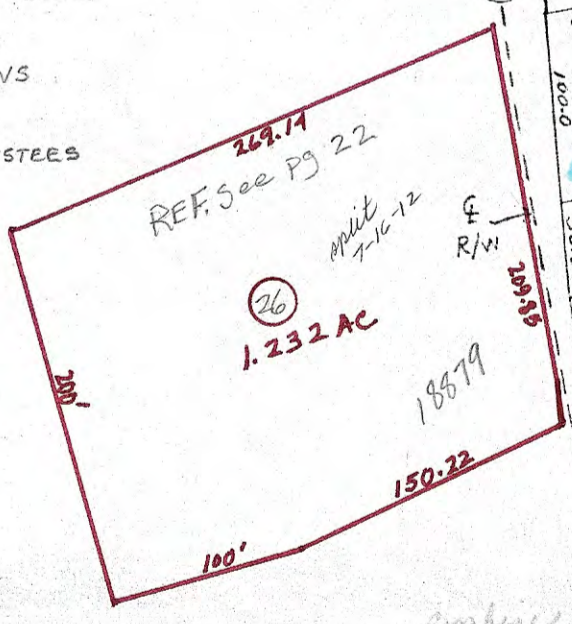


- 11 31-00306 OR 302-49
Kathy M. Shafer
- 6 31-00574 OR 570-374
ROSEANNE JOHNSON
- 19 31-01428 OR 353 Pg 964
RAYMOND JR & PEGGY LEASURE
- 21 31-01452 OR 353 Pg 964
RAYMOND JR & PEGGY LEASURE
- 2 31-01610 OR 390 Pg. 295
CHARLES A. LIPTACK
- 1 31-02448 O.R. 466-2747
TYSON & ANNE SMITH
- 5 31-02449 O.R. 466-2747
TYSON & ANNE SMITH
- 43 31-00412 OR 288 Pg. 149
AUBER, KENNETH RICHARD
- 18 31-02569 OR 349 Pg. 833
JOHN P. MORGAN
- 33 31-00503 OR 525-855
SHERMAN ARCHER
- 35 31-00084 OR 432 Pg 1255
JOSEPH & MELISSA GREGORY
- 48 31-00337 OR 426 Pg. 36
ICARUS INVESTMENTS LLC
- 47 31-00105 O.R. 531-3410
CATHY STEVENS
- 46 31-00411 OR 526-1922
JOHN & JANICE O'DONNELL TRUSTEES



PRELIMINARY
MAPS IN THIS OFFICE ARE
FOR TAX PURPOSES
ONLY-VERIFY INFO. BY DEED RECORDS

23

DELMAR E. GEORGE County Engineer LL TONY BROWN County Auditor ON HOWARD R. KING DRAWN BY	REVISED RMD 11/85 MER 10-2000	AERIAL PHOTO SCALE	TAX MAP RICHLAND TWP. GUERNSEY COUNTY OHIO	SHEET NO RANGE 11 TWP. 11 S23-1
---	-------------------------------------	-----------------------	---	--