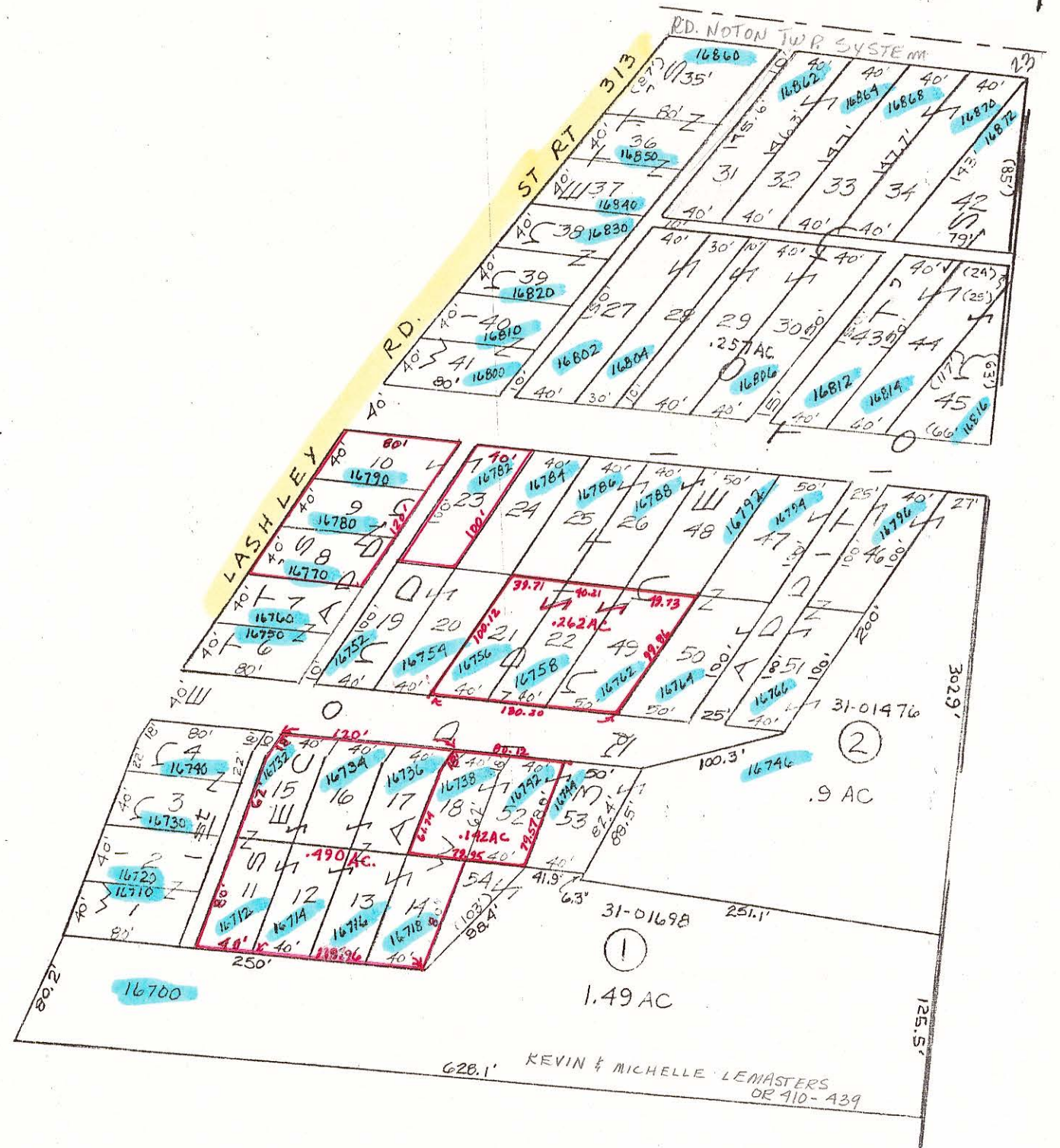


RD. DEDICATED TO PUBLIC
5-7-1959



MILITARY LOT 30

SE CORNER
ML 30

PRELIMINARY
MAPS IN THIS OFFICE ARE
FOR TAX PURPOSES
ONLY-VERIFY INFO. BY DEED RECORDS

28

THE PLATS AS HERE PORTRAYED DO NOT COINCIDE WITH THE PLAT BOOK, BUT THE PLAT BOOK DOES NOT COINCIDE WITH RECENT SURVEYS OR SUCH LANDMARKS AS: OLD SITE AND THE EAST LINE OF MILITARY LOT 30.

TAX MAP
RICHLAND TWP-WINNETT'S ADD'NS
scale 1"=100' GUERNSEY COUNTY OHIO

Range Twp
1 1 ML 30-2

DELMAR E. GEORGE
County Engineer
TONY BROWN
County Auditor

HOWARD R KING
cartographer
JEB '78
Drawn

Revised
RMD 11/25
MER 11-2000

Aerial Photo