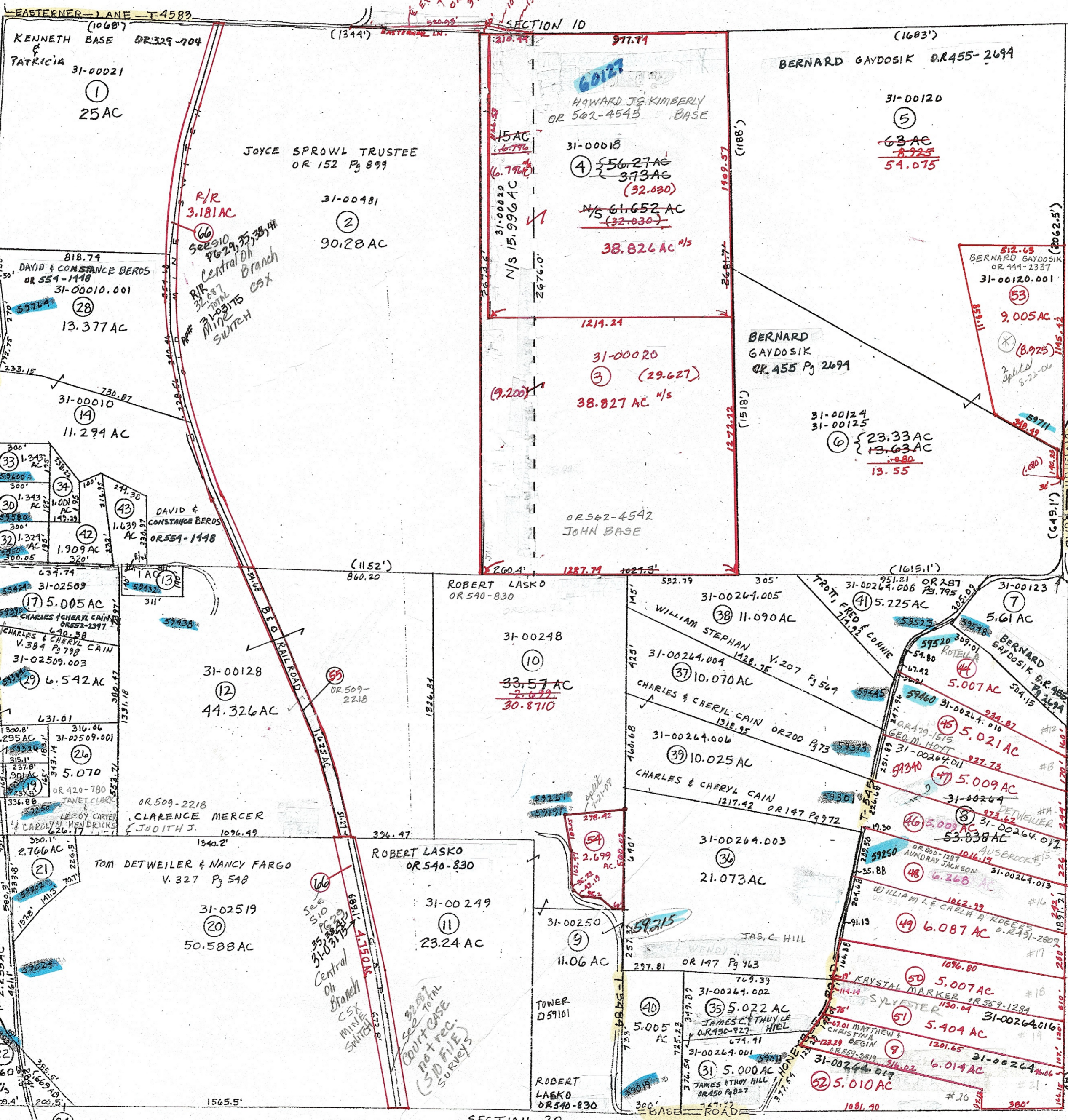


60000



13	31-00127 OR 560-2285 BRIAN & MELISSA BURRIS	22	31-02906 OR 3 P 386 CHARLES R. RAY TRUSTEE	32	31-00010.003 OR 472 P 3077 MARTORIE SCHAFFER	42	31-00264.009 OR 438-3257 CHARLES & JEWEL ROTELLA	54	31-00248.001 OR 15000 D.R. ALB-3312 SHAWN KELY J. LASKO
15	31-00032 OR 522 P 842 DIANE HOLLENBECK	23	31-02520 OR 99 P 486 DAVID OGLE TRUSTEE ORENDA	33	31-00010.005 OR 545-5033 ANTHONY M. & TRUDY R. YURINA CO-TRUSTEES	45	31-00264.010 OR 479-1515 GEO. M. HOYT INC.	50	31-00244.015 OR 455 P 1355 BENJAMIN MARKER & KRISTAL NIEVES
16	31-00173 OR 484-2500 WM. HARTLEY III TRUSTEE	24	31-02900 V. 349 P 519 TOM DETWEILER & NANCY FARGO	34	31-00010.004 OR 545-5030 ANTHONY & TRUDY YURINA CO-TRUSTEES	47	31-00264.011 OR 514-868 RONALD NELISHER INC.	51	31-00264.016 OR 372-102 JEFFERY & TAMARA SYLVESTER
18	31-00464 V. 358 P 346 ARTHUR & FRANCES HAYES	25	31-02905 OR 556-3332 DUSTIN & JILL WALDER	40	31-00264.007 OR 254 P 443 JAMES HILL	46	31-00264.012 OR 514-868 RONALD NELISHER	52	31-00264.017 OR 502-1078 RICHARD WALTON
19	31-02510 OR 458 P 1229 ERIC & SUSAN STCLAIR	27	31-02509.002 O.R. 42-730 JANET CLARK & DEAN CARTER JR.	42	31-00010.006 OR 472 P 3077 MARTORIE SCHAFFER	48	31-00264.013 OR 530-3450 DARYL & MELISSA CORK	53	31-00264.017 OR 502-1078 RICHARD WALTON
21	31-02518 OR 568 EVAN ROSSITER	30	31-00010.002 OR 545-5033 ANTHONY & TRUDY R. YURINA CO-TRUSTEES	43	31-00010.007 OR 472 P 3077 MARTORIE SCHAFFER	49	31-00264.014 OR 489-701 BRUNER LAND CO.	55	31-00264.018 OR 372-102 J.J. DETWEILER & ENT. INC.

DELMAR E. GEORGE
County Engineer

HOWARD R. KING
Cartographer

TONY BRUNN
County Auditor

Revised
RMD 11/85
MER 2/01

Aerial Photo
2-G-96

TAX MAP
RICHLAND TOWNSHIP
GUERNSEY COUNTY OHIO

Range Twp
2 1 S11

scale 1" = 400'

PRELIMINARY
MAPS IN THIS OFFICE ARE
FOR TAX PURPOSES
ONLY-VERIFY INFO. BY DEED RECORDS

35