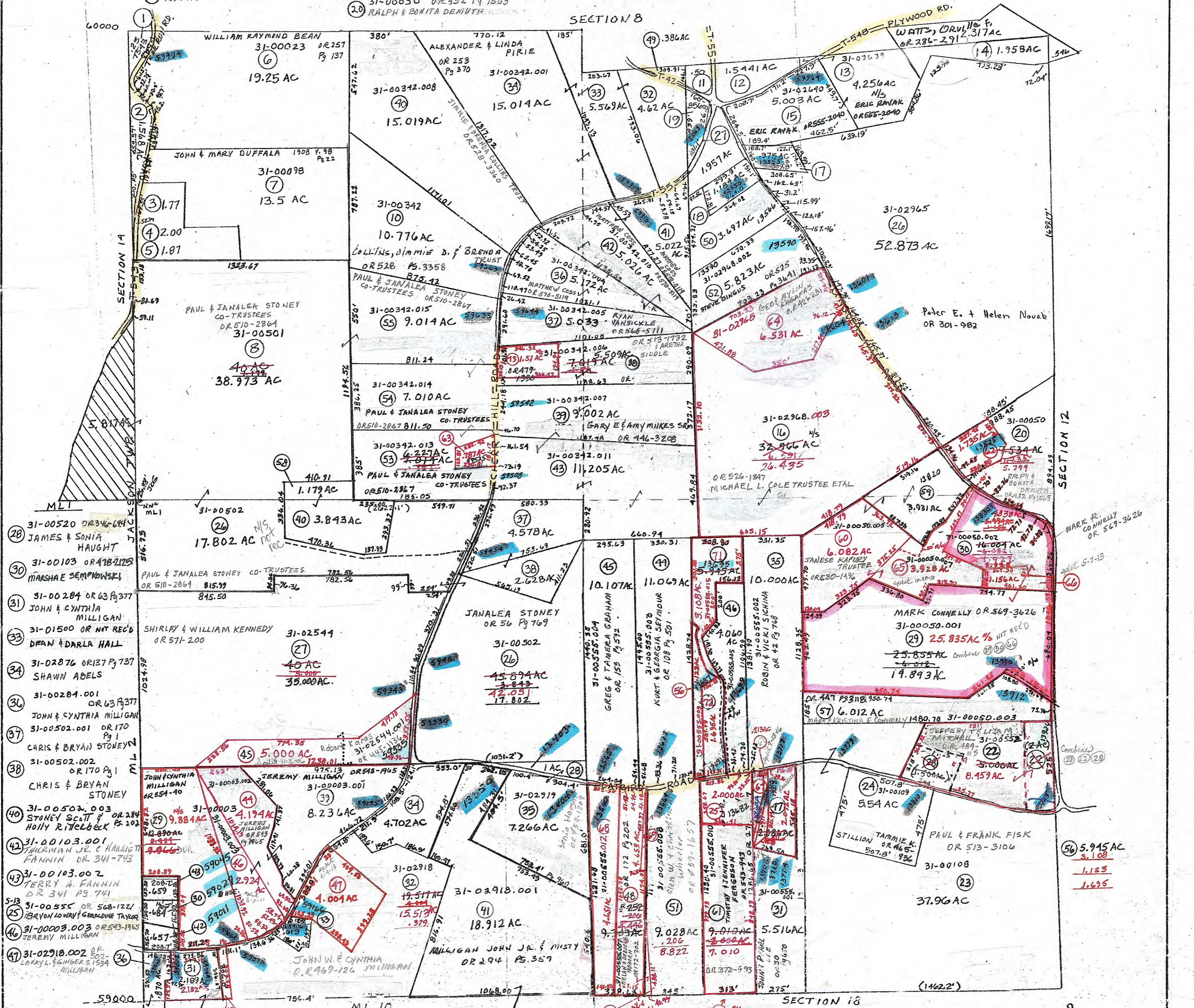


- ① 31-00012 OR 516-49  
DALE FIEGLAND
- ② 31-00093 OR 496-279  
WILLIAM DUBINSKY III ETAL
- ③ 31-00274 OR 487 Pg 1205  
WILLIAM DUBINSKY III ETAL
- ④ 31-00273 OR 487 Pg 1205  
WILLIAM DUBINSKY III ETAL
- ⑤ 31-00251 V. 202 Pg 220  
C. R. LAUGHMAN
- ⑪ 31-00263 OR 116 Pg 518  
DANNY MALLET
- ⑫ 31-00089 OR 555-2040  
ERIC RAYAK
- ⑬ 31-02504 OR 116 Pg 496  
RONALD & JULIEANN MARTIN
- ⑭ 31-02550 OR 185-2849  
JAMES & ERIKA OLDEN
- ⑮ 31-02805 OR 54 Pg 546  
LANDIS & RONDA SHULER
- ⑳ 31-02969 OR 313 Pg 201  
SARIE L. KIRKMAN

- ⑳ 31-00312.003 OR 330 Pg 413  
ALEXANDER I & LINDA T. PIRIE
- ㉑ 31-00342.002 OR 253 Pg 370  
ALEXANDER & LINDA PIRIE
- ㉒ 31-00342.009 OR 459-2032  
Deborah S. COOPER
- ㉓ 31-00555.006 OR 215 Pg 129  
WM. McPEEK & JUDY MICHELLE McPEEK
- ㉔ 31-00342.012 OR 180 Pg 342  
DANNY MALLET
- ㉕ 31-02968.001 OR 381 Pg 20  
BRENDA S. THOMAS
- ㉖ 31-00555.005 OR 265 Pg 335  
ANGIE L. BOSO
- ㉗ 31-00501.001 OR 284 Pg 202  
STONEY SCOTT & HOLLY RITTEBECK
- ㉘ 31-00050.004 OR 530-1496  
JANESE KAFURY TRUSTEE
- ㉙ 31-00342.010 OR 459 Pg 2032  
DEBORAH S. COOPER
- ㉚ 31-00050 OR 432 Pg 1563  
RALPH & BONITA DEMUTH

- ㉛ 31-00555.009 OR 553-1525  
ROGER K. SMITH
- ㉜ 31-00050.006 OR 399 Pg 269  
RALPH & BONITA DEMUTH
- ㉝ 31-00342.016 OR 627-2228  
DEBORA LOVEALL
- ㉞ 31-00050.007 OR 530-1496  
JANESE KAFURY TRUSTEE
- ㉟ 31-00050.008 OR 569-3626  
MARK CONNELLY
- ㊱ 31-00555.011 OR 545-3170  
WILLIAM & JUDY McPEEK
- ㊲ 31-00555.012 OR 530-2783  
KEVIN MICHAEL & RHONDA L. JENKINS CROSS
- ㊳ 31-00555.013 OR 533-1585  
GLENN W. & CHRISTINA M. WHEELER
- ㊴ 31-00555.014 OR 533-1388  
BRIAN & DEBORAH HOMAN
- ㊵ 31-00555.015 OR 553-1338  
DEBORAH A. SMITH
- ㊶ 31-00555.016 OR 553-1343  
ANTHONY SMITH
- ㊷ 31-00342.017 OR 570-3263  
SCOTT C. FARRAR



PRELIMINARY  
MAPS IN THIS OFFICE ARE  
FOR TAX PURPOSES  
ONLY-VERIFY INFO. BY DEED RECORDS

37

DELMAR E. GEORGE County Engineer	HOWARD R. KING Cartographer	2/83 11/85 RMD 2-2001 MER	Revised	Aerial Photo 2-G-137	TAX MAP RICHLAND TOWNSHIP GUERNSEY COUNTY OHIO	Scale 1"=400'	Range Twp 2 1	S13, MLI
-------------------------------------	--------------------------------	---------------------------------	---------	-------------------------	--	---------------	------------------	----------