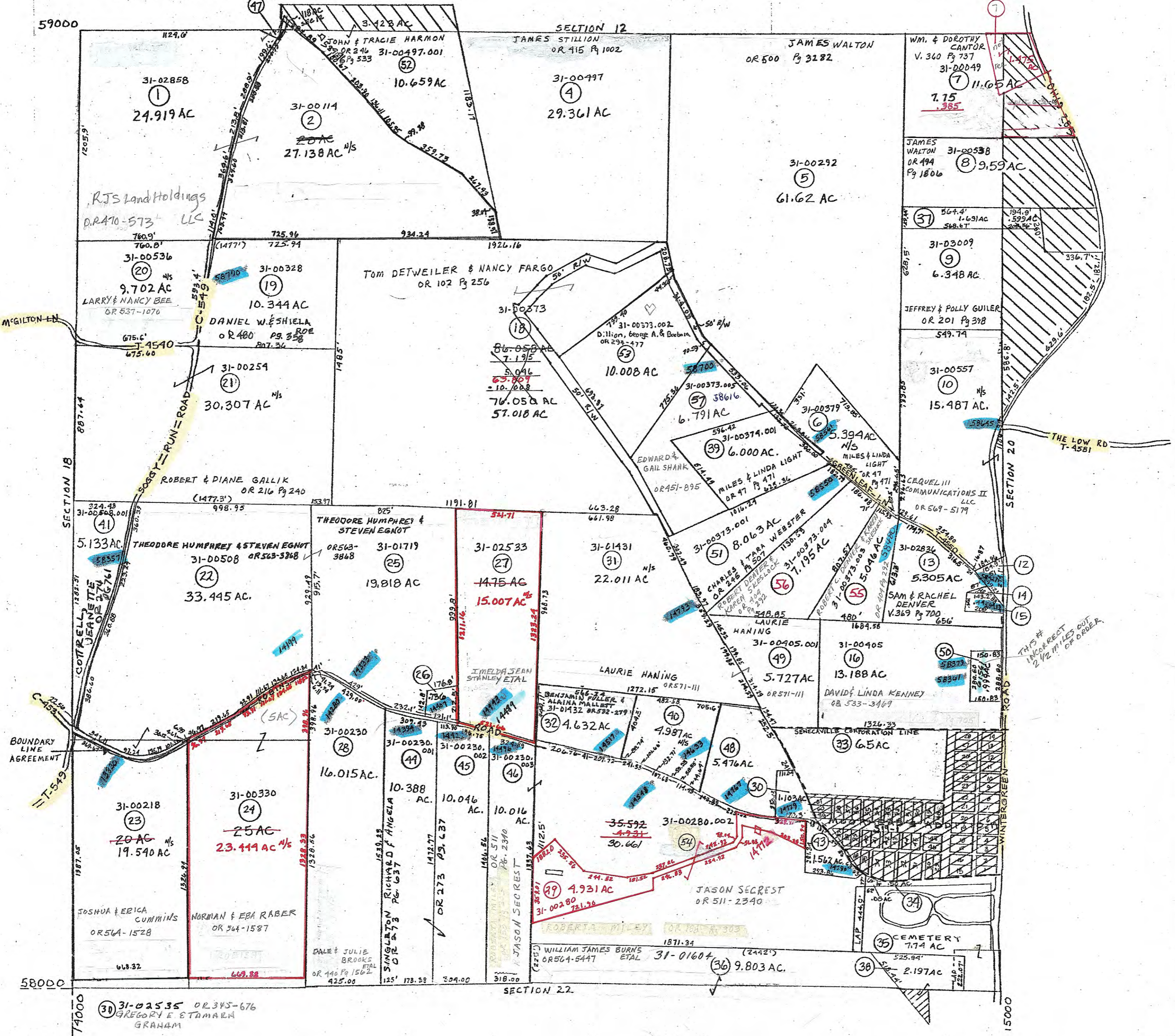


- 12 31-02400 OR 489 Pg 1036  
SAME DENVER
- 14 31-02837 V. 363 Pg 424  
SAM & RACHEL DENVER
- 15 31-02582 V. 363 Pg 424  
SAM & RACHEL DENVER
- 24 31-01720 OR 555-1201  
BRANDON & AMIZAE HENTHORNE
- 30 31-02535 OR 129 Pg 657  
MICHAEL & MICHELE ROSS
- 37 31-03010 V. 382 Pg 981  
ROBERT & LORI JAMIEL
- 38 V. 370 Pg 32  
RICHLAND TWP. TRUSTEES
- 40 31-02535.001 OR. 492 Pg 577  
ROLAND & JULIE SMITH
- 49 31-00280.001 V. 383 Pg 133  
JAMES & NORMA LAW
- 47 31-02858.001 OR 419 Pg 658  
HOWARD THOMAS RUSSELL
- 48 31-02535.002 OR 90 Pg 8  
JEFFREY & KATHY GANN
- 50 31-00405.002 OR 118 Pg 574  
NORMAN & STELLA BLANCHARD
- 29 31-00280 OR 511-2340  
JASON SECREST



PRELIMINARY  
MAPS IN THIS OFFICE ARE  
FOR TAX PURPOSES  
ONLY-VERIFY INFO. BY DEED RECORDS

39

DELMAR E. GEORGE County Engineer TONY BROWN County Auditor	HOWARD R KING Cartographer JRS '81 Drawn	Revised RMD 11/85 MER 11-90 MER 3-01	Aerial Photo 2-6-139 2-6-94 2-6-96	TAX MAP RICHLAND TOWNSHIP GUERNSEY COUNTY OHIO scale 1"=400'	Range TWP 2 1 519
---------------------------------------------------------------------	---------------------------------------------------	-----------------------------------------------	---------------------------------------------	-----------------------------------------------------------------------	----------------------