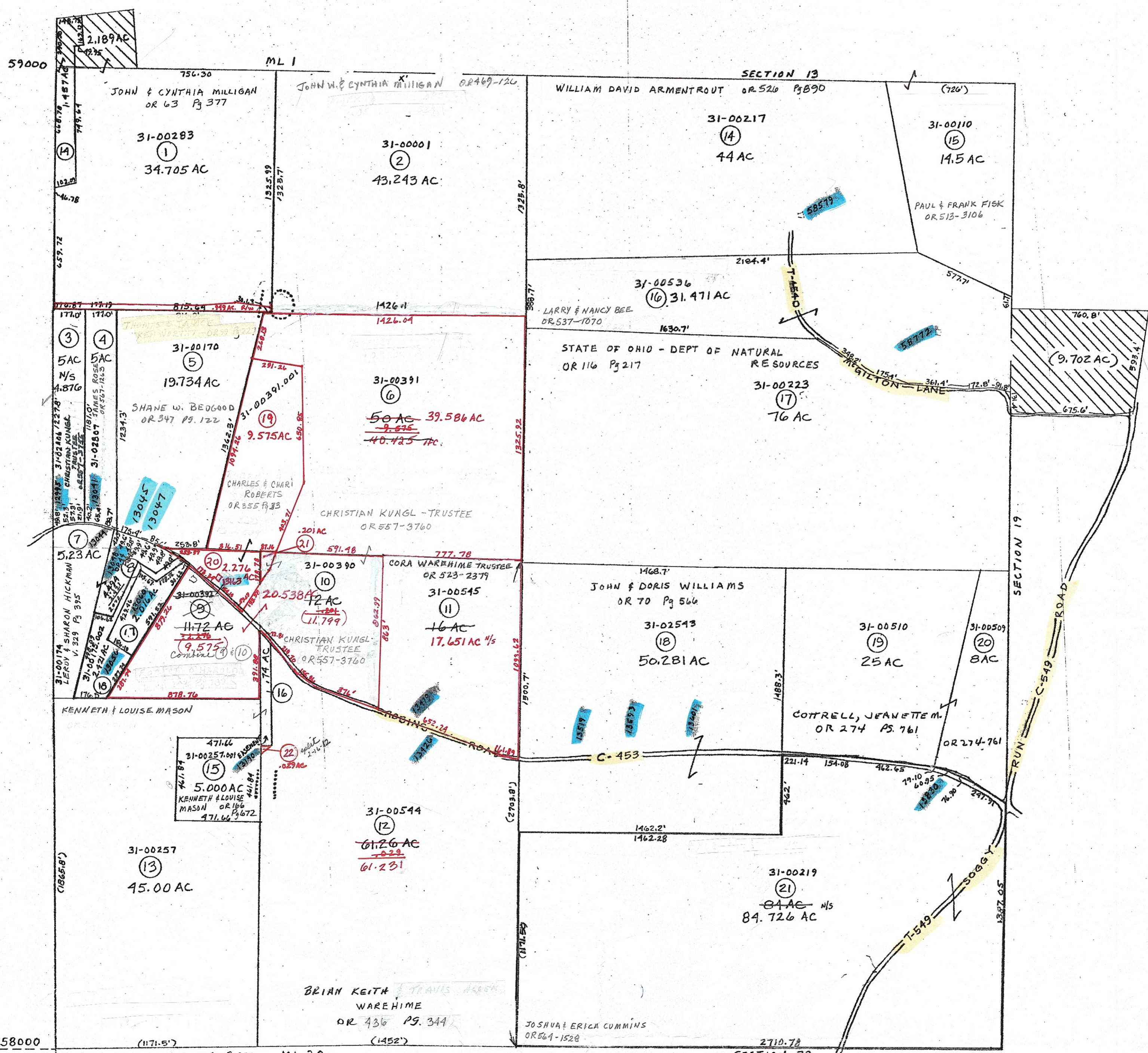


- 18 31-00175.002 OR 322 Pg 1068
HICKMAN LEROY W JR & TONJA K
- 21 31-00390.001 OR 350 Pg 1007
ROBERT O'HAROLD



- 14 31-00283.001 OR 63 Pg 377
JOHN & CYNTHIA MILLIGAN
- 16 31-00257.002 OR 567-801
KENNETH & LOUISE MASON
- 17 31-00175.001 OR 273-474
HICKMAN, ROBERT J.
- 21 31-00390.001 OR 557-3760
CHRISTIAN KUNGL-TRUSTEE
- 22 31-00544.001 OR 487-3189
KENNETH & LOUISE MASON

PRELIMINARY
MAPS IN THIS OFFICE ARE
FOR TAX PURPOSES
ONLY-VERIFY INFO. BY DEED RECORDS

40

DELMAR E. GEORGE County Engineer TONY BROWN County Auditor	HOWARD R KING cartographer JBS '81 Drawn	Revised RMD 11/85 MER 3-01	Aerial Photo 2-G-139	TAX MAP RICHLAND TOWNSHIP GUERNSEY COUNTY OHIO scale 1"=400'	Range Twp 2 1 1/2 5 18 ML'S 10, 11
---	---	----------------------------------	-------------------------	---	---