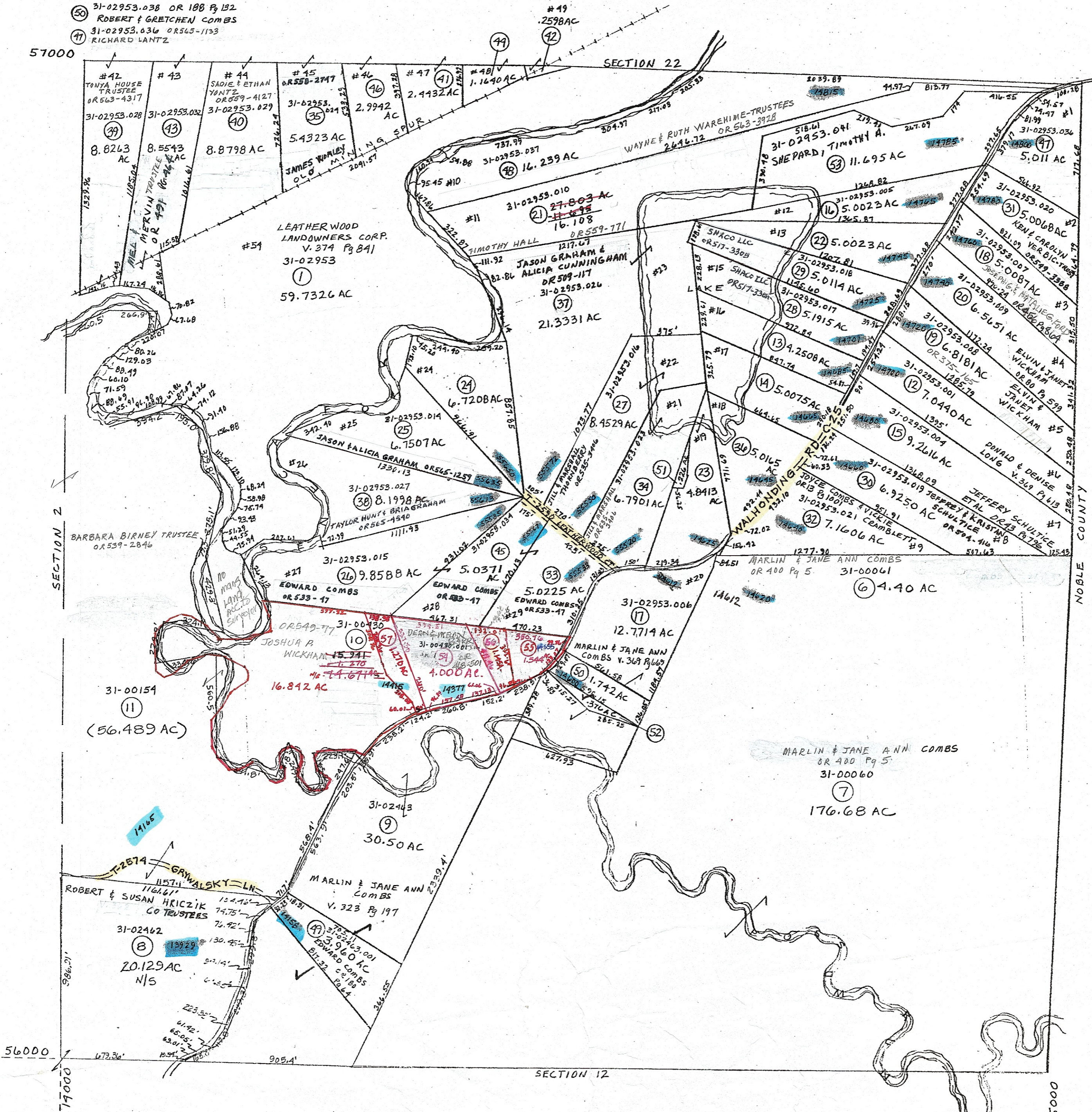


- ⑬ 31-02953.002 OR550 Pg256
PATTEN AUCTION & LAND CORP.ETAL
- ⑭ 31-02953.003 OR 517-3305
SHAC LLC
- ⑮ 31-02953.005 OR561-3415
DANNY CLARK JR.
- ⑯ 31-02953.011 OR 456 Pg 2526
DONNA PAOLA
- ⑰ 31-02953.012 OR 561-5610
JASON KIRKLAND
- ⑱ 31-02953.013 OR 527-491
JASON L & ALICIA M. GRAHAM
- ⑲ 31-02953.022 OR 164 Pg 665
RAYMOND & HELEN THRASH-TRUSTEES
- ⑳ 31-02953.025 OR 560 Pg 3048
JASON KIRKLAND & NANCY NEFF
- ㉑ 31-02953.020 OR 143 Pg 260
ROBERT RINEHART
- ㉒ 31-02953.031 OR 529-848
KEVIN KOPACK
- ㉓ 31-02953.033 OR 119 Pg 744
EARL & DIANE ARNOLD
- ㉔ 31-02953.035 OR 143 Pg 260
ROBERT RINEHART
- ㉕ 31-02953.038 OR 188 Pg 182
ROBERT & GRETCHEN COMBS
- ㉖ 31-02953.036 OR565-1133
RICHARD LANTZ
- ㉗ 31-02953.039 OR 535-3422
JILL & MARSHALL THORNBERRY
- ㉘ 31-02953.040 OR 213 Pg 643
ROBERT & GRETCHEN COMBS
- ㉙ 31-00430.002 OR 567-3146
KELLIE LOY ETAL
- ㉚ 31-00430.003 OR 529-859
CORY D HILL
- ㉛ 31-00430.004 OR 536-3360
PAUL E GRYWALSKI



PRELIMINARY
MAPS IN THIS OFFICE ARE
FOR TAX PURPOSES
ONLY-VERIFY INFO. BY DEED RECORDS

44

DELMAR E. GEORGE County Engineer TONY BROWN County Auditor	HOWARD R KING Cartographer JBS '31 Drawn	Revised	Aerial Photo	TAX MAP RICHLAND TOWNSHIP GUERNSEY COUNTY OHIO	Range	Twp
		RMD 11/85 MER 4/01	2-G-141 2-G-142 #127		9	8 S1