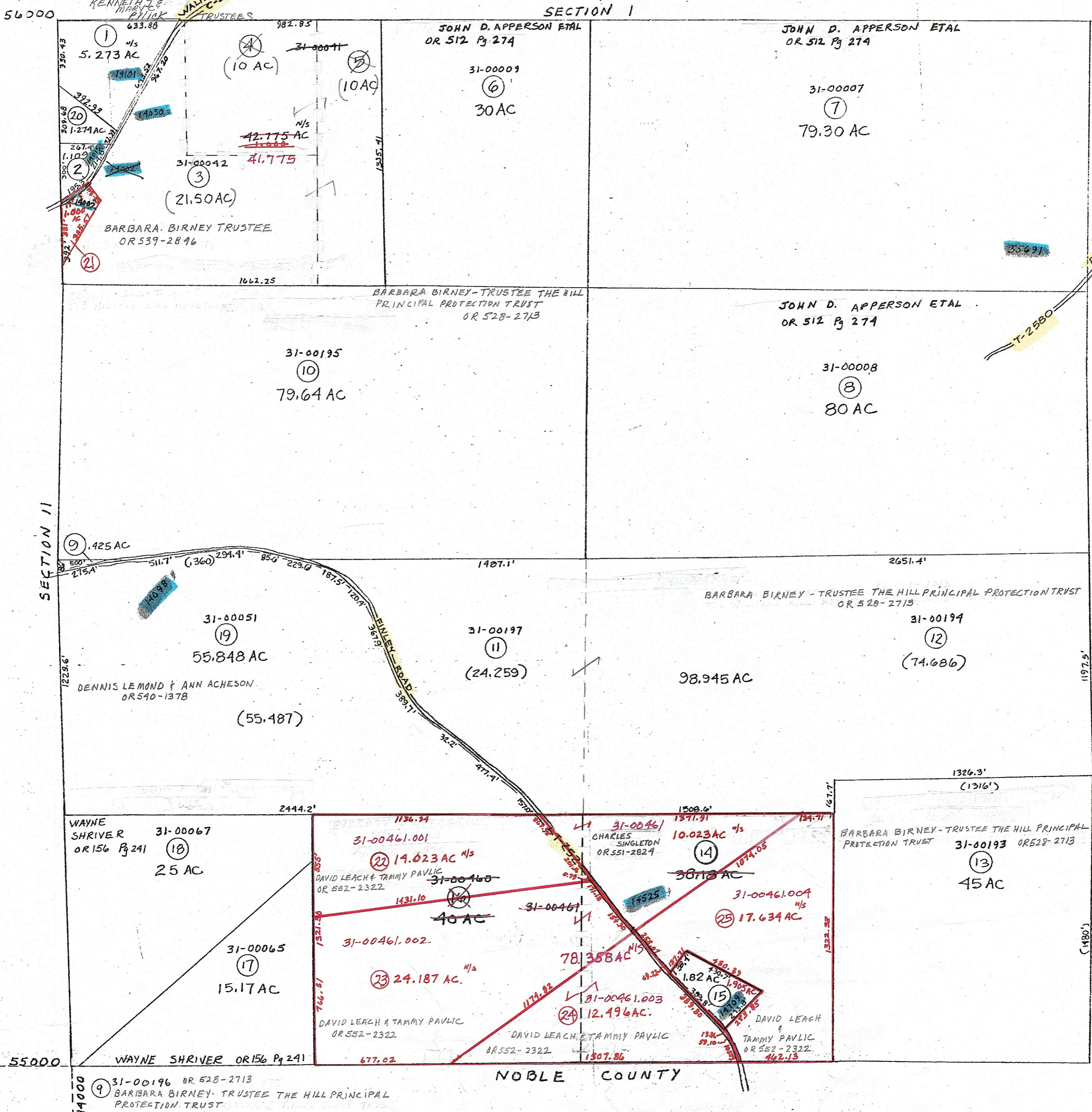


- ① 31-02330 OR 178 P3 1751
ROBERT & SUSAN HRICZIK CO TRUSTEES
- ② 31-02331 OR 519-330
BRIAN PEOPLES & ANDREA CRUM
- ⑨ 31-00196 OR 380 P5 375
WILFORD HILL
- ⑮ 31-00459 OR 560-1373
MICHAEL & JACQUELINE McELFRESH
- ⑳ 31-02330.001 OR 353 P5 57
DANNY E. DETTRA
- ㉑ 31-00042.001
OR 545-58
KENNETH J. PAVLIK
WALHANDING TRUSTEES



PRELIMINARY
MAPS IN THIS OFFICE ARE
FOR TAX PURPOSES
ONLY-VERIFY INFO. BY DEED RECORDS

45

DELMAR E. GEORGE County Engineer TONY BROWN County Auditor	HOWARD R KING cartographer JRS '81 Drawn	Revised	Aerial Photo 2-G-92 2-G-141 # 137	TAX MAP RICHLAND TOWNSHIP GUERNSEY COUNTY OHIO	Range	Twp	9 8 512
		RMD 11/85 MER 1/01			9	8	