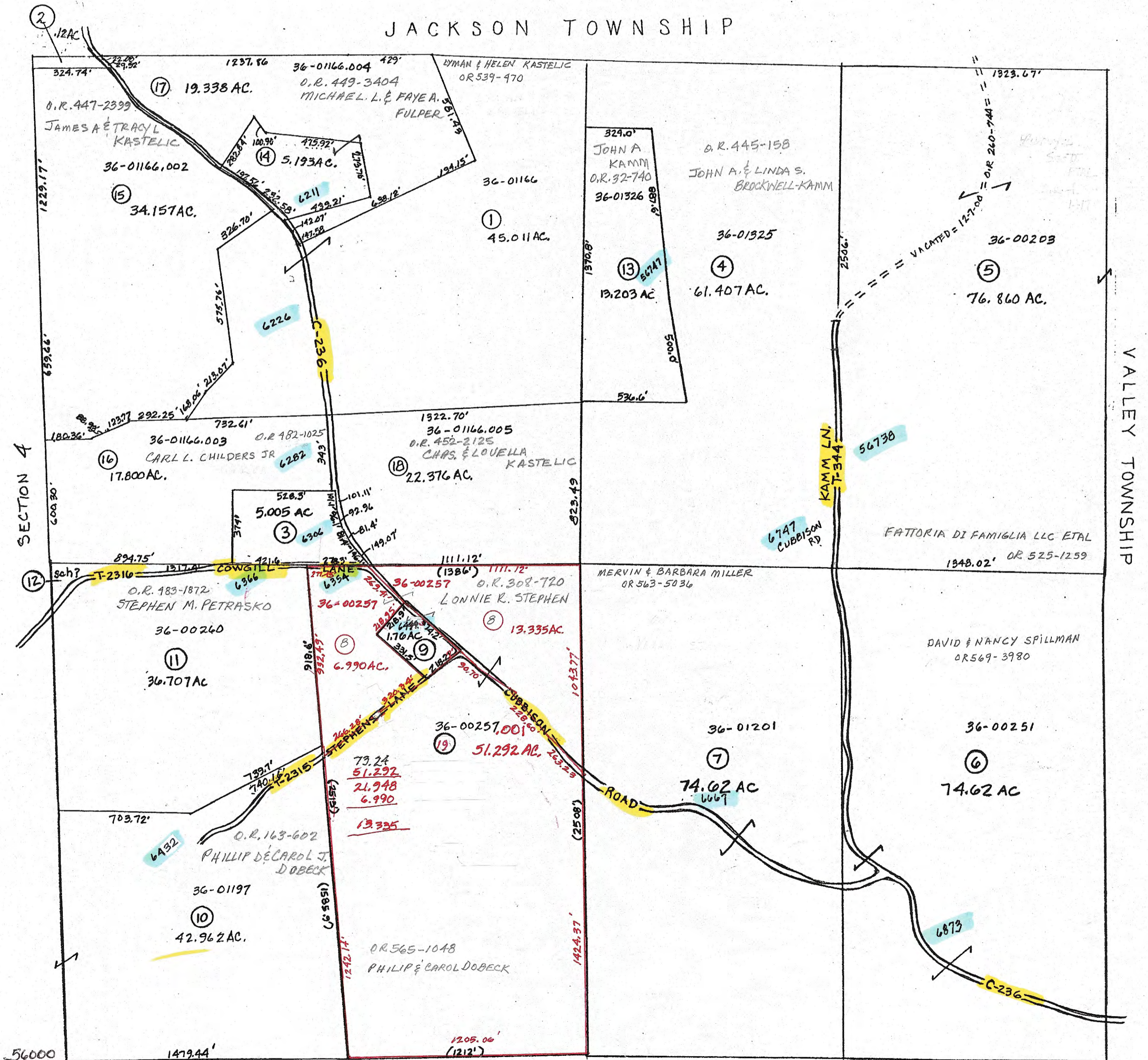


- ② 36-00155 O.R. 450-3170
GARY A. CAMPBELL
- ③ 36-01167 O.R. 482-1025
CARL L. CHILDERS JR
- ⑨ 36-00258 O.R. 557-2222
LONNIE R. STEPHEN
- ⑫ 36-01236
COLLEGE HILL SCHOOL
- ⑭ O.R. 12A-6A6
MICHAEL L. & FAYE A. FULPER

JACKSON TOWNSHIP



PRELIMINARY
MAPS IN THIS OFFICE ARE
FOR TAX PURPOSES
ONLY-VERIFY INFO. BY DEED RECORDS

①

DELMAR E. GEORGE County Engineer TONY BROWN County Auditor	HOWARD R KING cartographer JBS Drawn	Revised BMH 3-10-09	Aerial Photo 2-6-9 2-6-11 #131	TAX MAP SPENCER TOWNSHIP GUERNSEY COUNTY OHIO scale 1" = 400'	Range 10	Twp 9	S3
	TELETYPE POST						