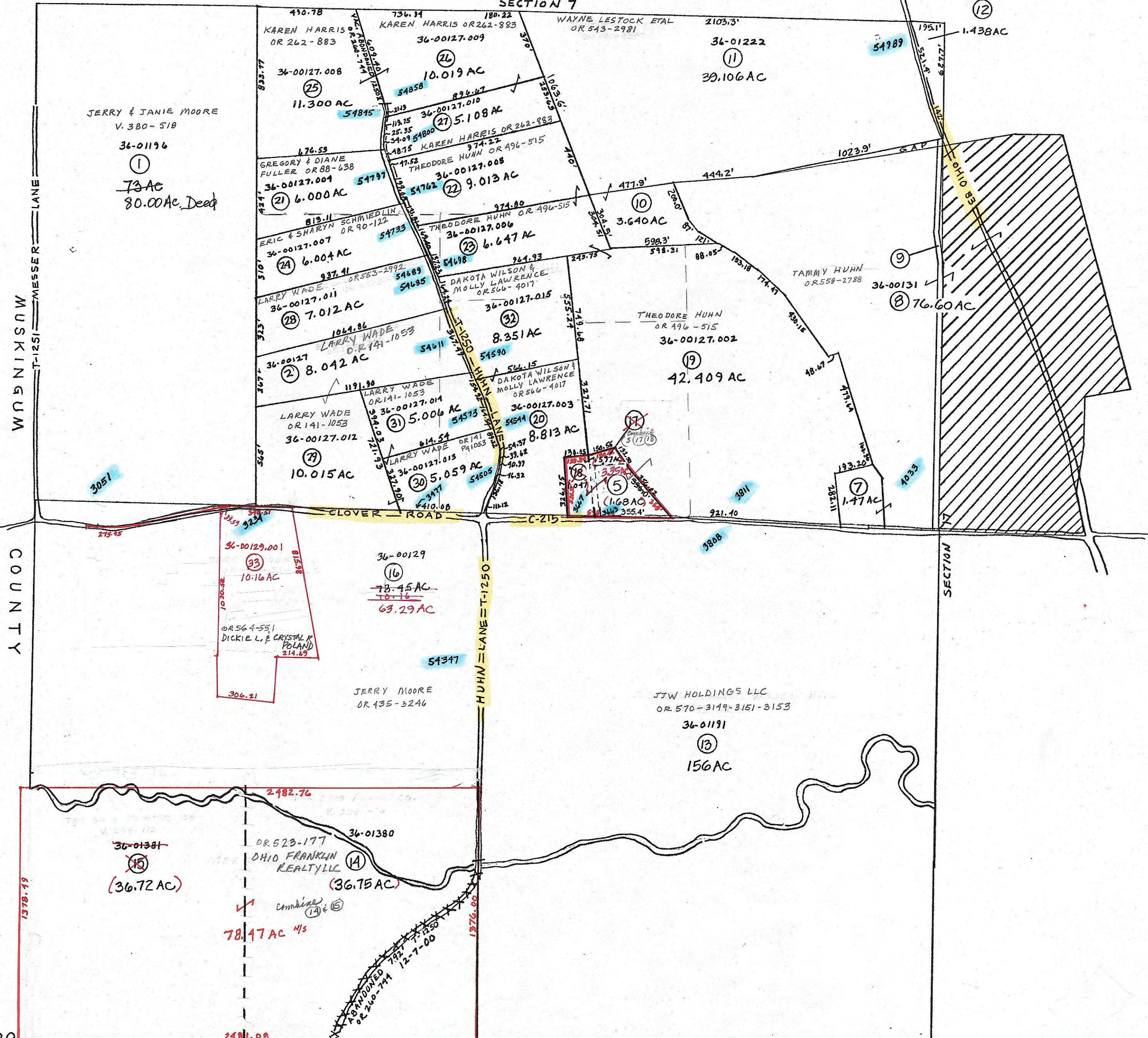


50000

SECTION 7

12



PRELIMINARY
MAPS IN THIS OFFICE ARE
FOR TAX PURPOSES
ONLY-VERIFY INFO. BY DEED RECORDS

12

<p>DELMAR E. GEORGE County Engineer</p> <p>TONY BROWN County Auditor</p>	<p>HOWARD R KING cartographer</p> <p>J85 '81 Drawn</p>	<p>MER 2-1-10 Revised</p>	<p>Aerial Photo 2-9-58 2-9-60</p>	<p>TAX MAP SPENCER TOWNSHIP GUERNSEY COUNTY OHIO</p>	<p>Range Twp 10 9 S18</p>
--	---	---------------------------	---	---	-------------------------------