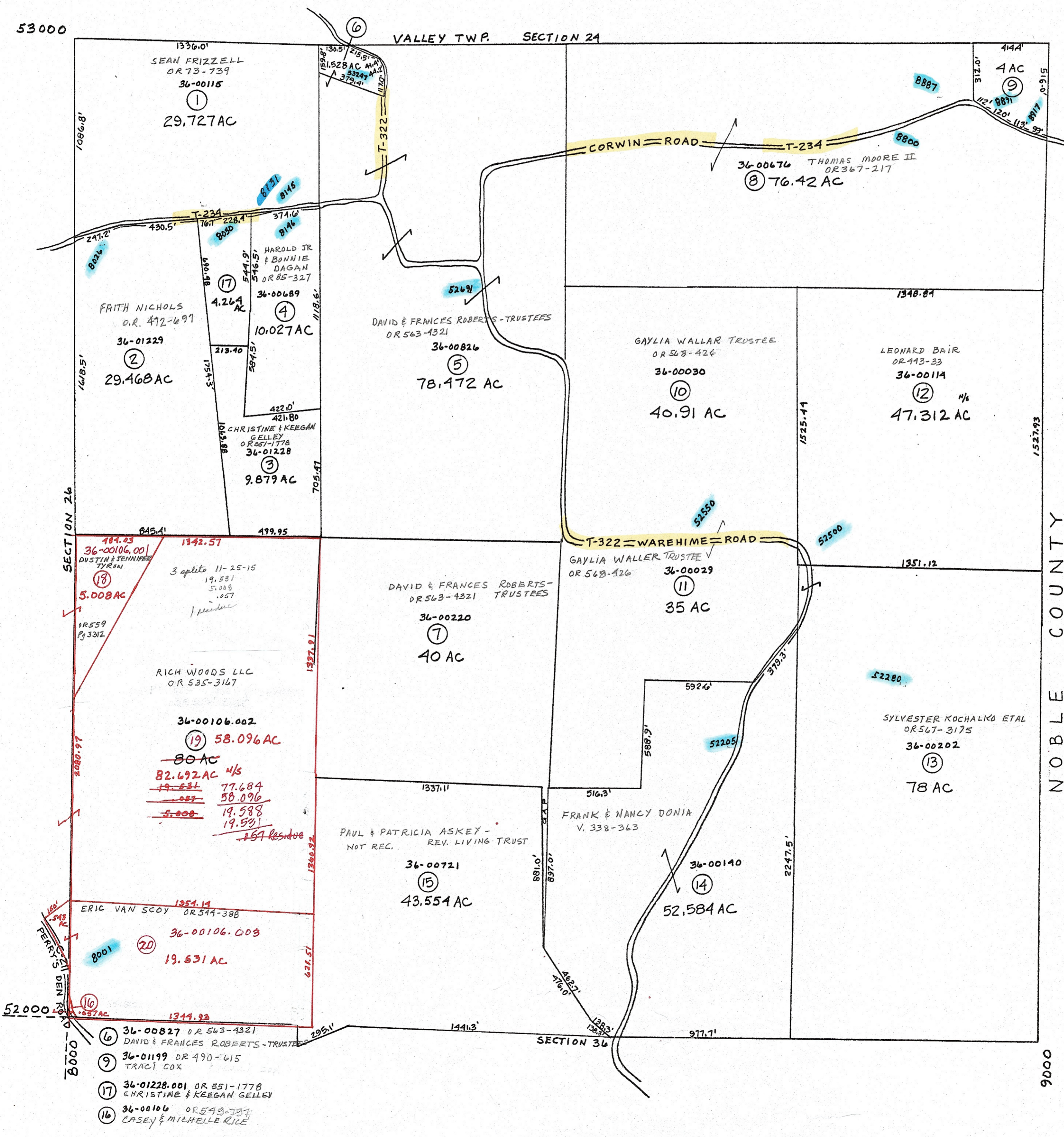


53000

VALLEY TWP. SECTION 24

NOBLE COUNTY

9000



PRELIMINARY
MAPS IN THIS OFFICE ARE
FOR TAX PURPOSES
ONLY-VERIFY INFO. BY DEED RECORDS

18

DELMAR E. GEORGE County Engineer	HOWARD R KING cartographer	MFR 2-11-10 Revised	Aerial Photo 2-G-214 2-G-212 new #144	TAX MAP SPENCER TOWNSHIP GUERNSEY COUNTY OHIO	Range 10	Twp 9	S25
TONY BROWN County Auditor	JBS '81 Drawn		scale 1" = 400'				