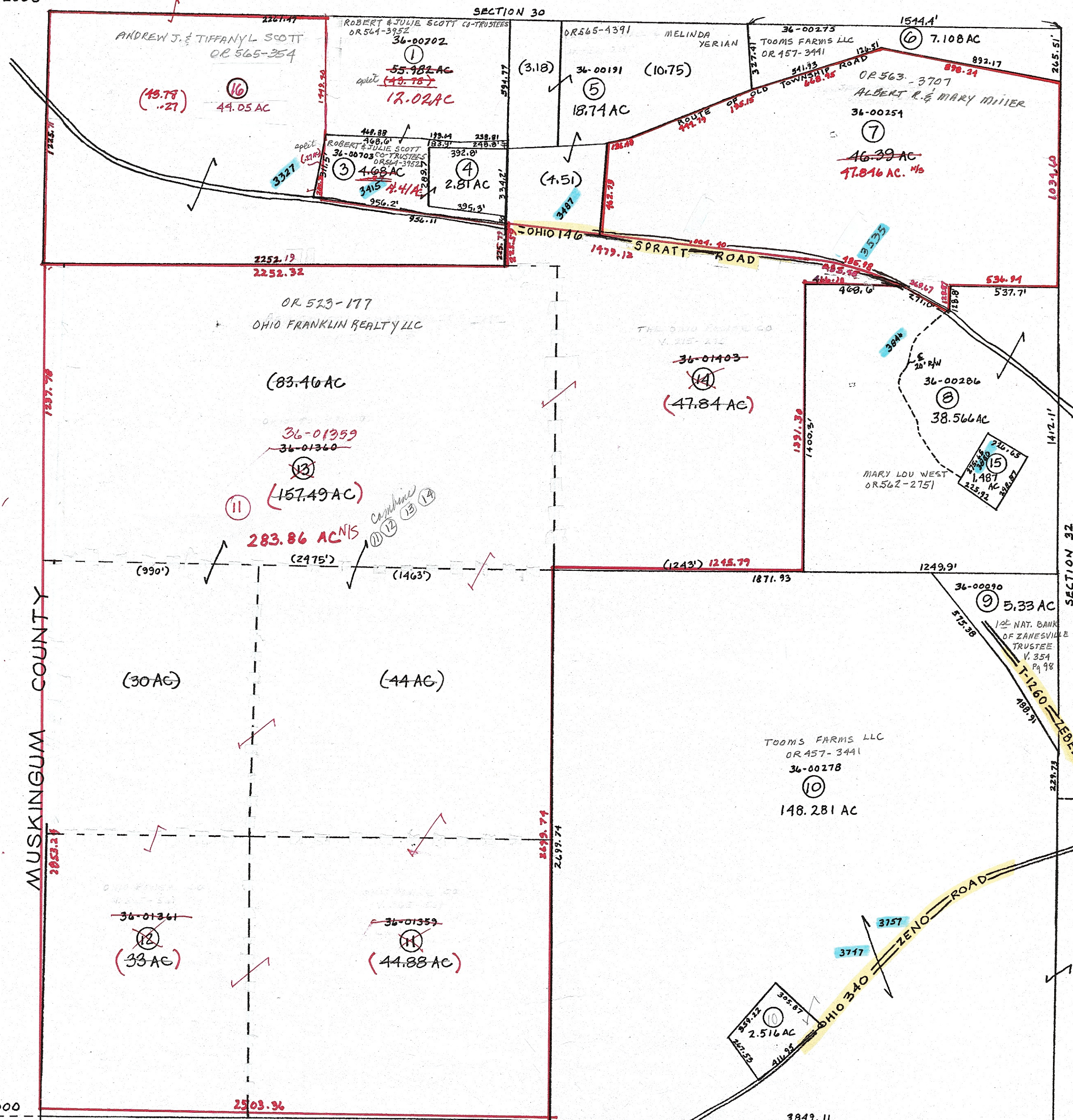


52000

SECTION 30



MUSKINGUM COUNTY

NOBLE COUNTY

SECTION 32

PRELIMINARY  
MAPS IN THIS OFFICE ARE  
FOR TAX PURPOSES  
ONLY-VERIFY INFO. BY DEED RECORDS

24

- ① 36-00227 OR 564-3952 ROBERT & ELIZABETH SCOTT-CO-TRUSTEES
- ⑮ 36-00286.001 OR 105-155 JAMES & LAURA WEST

DISTANCES IN PARENTHESES ARE BY DEED, NOT BY SURVEY

<b>DELMAR E. GEORGE</b> County Engineer <b>TONY BROWN</b> County Auditor	<b>HOWARD R KING</b> cartographer	MR 2-24-10 Revised	Aerial Photo Z-G-6Z	<b>TAX MAP</b> <b>SPENCER TOWNSHIP</b> <b>GUERNSEY COUNTY OHIO</b>	Range 10	Twp 9	S31
	JBS '81 Drawn				scale 1" = 400'		