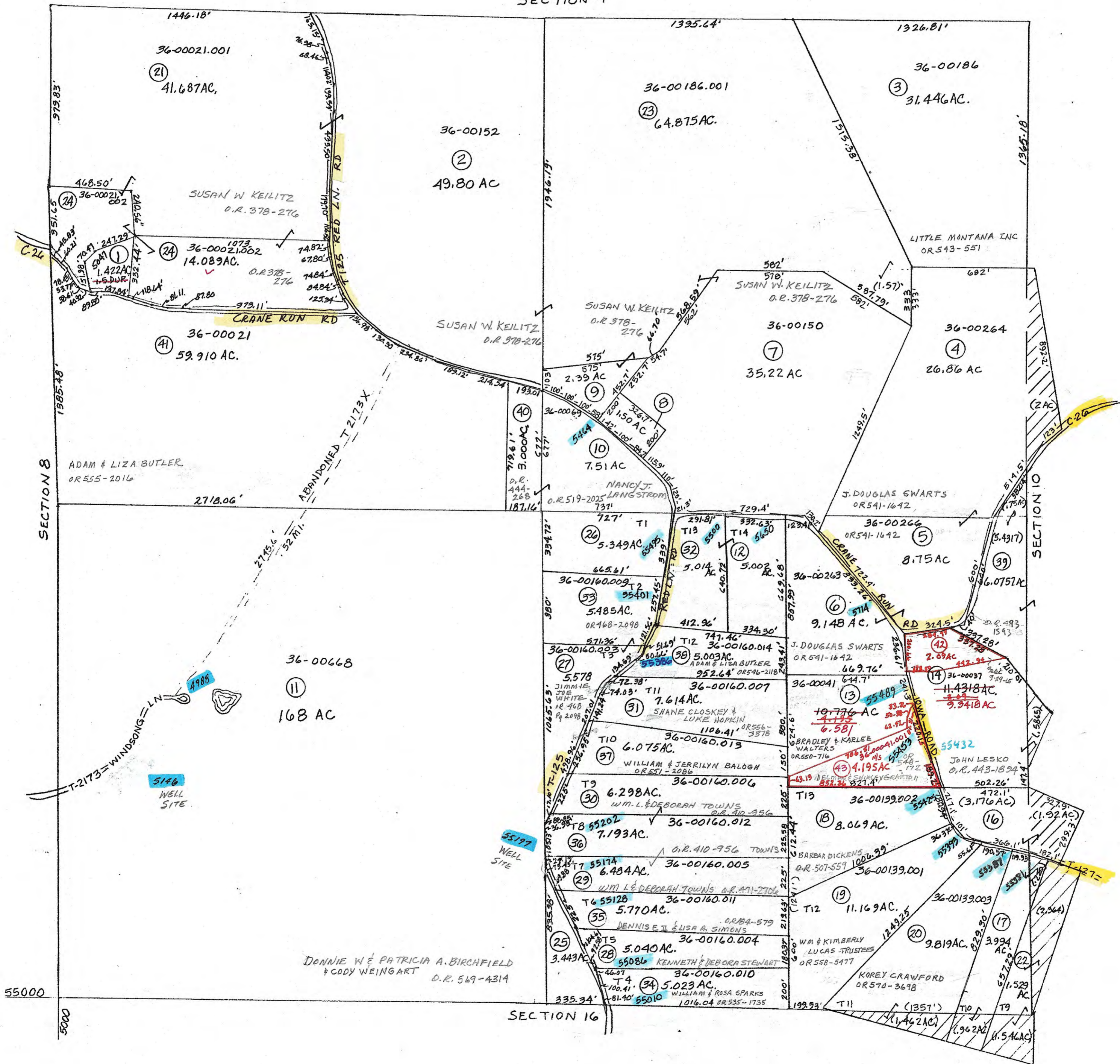


- ① 36-00021.003 O.R. 540-1130
ADAM & LIZA BUTLER
- ⑧ 36-00265 O.R. 541-1442
J. DOUGLAS SWARTS
- ⑨ 36-00151 O.R. 378-276
SUSAN W KEILITZ
- ⑫ 36-00160 O.R. 546-8
MADISON BUTCHER
- ⑯ 36-00036 O.R. 498-746
MARGARET MARTIN
- ⑰ 36-00139 O.R. 413-1446
JAS. SHUMAR
- ⑳ 36-00139.004 O.R. 524-687
MATTHEW & CASSANDRA ARMBRUSTER
- ㉓ 36-00160.001 O.R. 444-32
RICHARD L. & ETHEL M. MASTERS

- ㉔ 36-00160.002 O.R. 174-799
MICHAEL J. & KATHRYN A. SCHWARK
- ㉖ 36-00160.008 O.R. 546-8
MADISON BUTCHER
- ㉙ 36-00037.001 O.R. 493-1593
MICHAEL J. WALTZ
- ㉚ 36-00021.004 O.R. 519-2025
NANCY J. LANGSTROM
- ㉛ 36-00037.002 O.R. 562-778
JOHN LESKO

SECTION 4



PRELIMINARY
MAPS IN THIS OFFICE ARE
FOR TAX PURPOSES
ONLY-VERIFY INFO. BY DEED RECORDS

DELMAR E. GEORGE County Engineer TONY BROWN County Auditor	HOWARD R KING cartographer JBS '81 Drawn	9-09 BMH Revised	Aerial Photo 2-6-9	TAX MAP SPENCER TOWNSHIP GUERNSEY COUNTY OHIO scale 1" = 400'	Range 10 Twp 9 59
---	---	---------------------	-----------------------	---	-------------------------