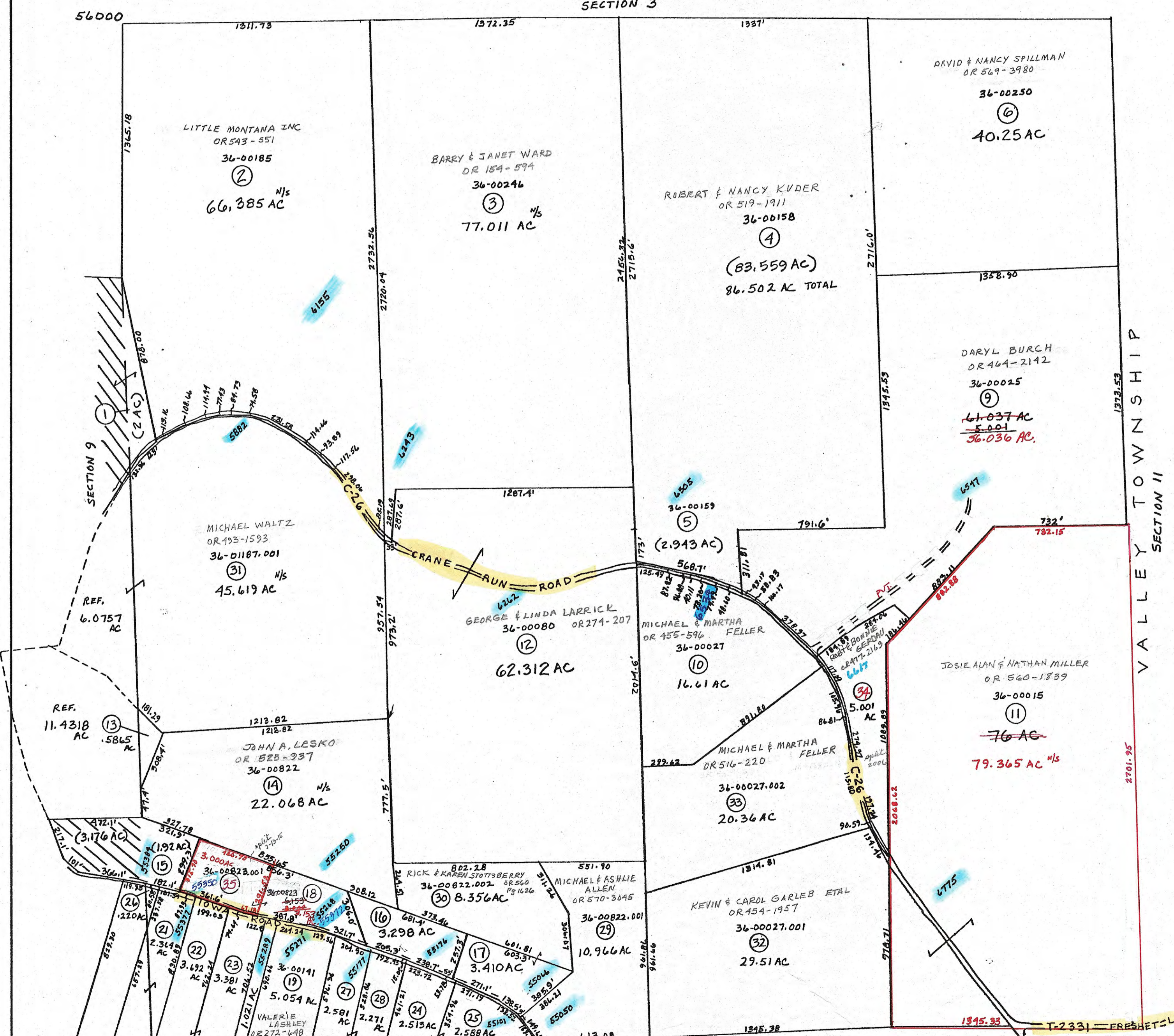


SECTION 3



- ① 36-00267 OR 541-1642 J. DOUGLAS SWARTS
- ② 36-00185 OR 543-551 LITTLE MONTANA INC
- ③ 36-00246 OR 154-594 BARRY & JANET WARD
- ④ 36-00158 OR 519-1911 ROBERT & NANCY KUDER
- ⑤ 36-00159 OR 560-259 CLARISSA & MARK CAMPBELL JR
- ⑥ 36-00250 OR 549-3980 DAVID & NANCY SPILLMAN
- ⑦ 36-00141.001 OR 375-644 RICK & KAREN STOTTSBERRY
- ⑧ 36-00141.002 OR 524-687 MATTHEW & CASSANDRA ARM BRUSTER
- ⑨ 36-00025 OR 464-2142 DARYL BURCH
- ⑩ 36-00027 OR 455-596 MICHAEL & MARTHA FELLER
- ⑪ 36-00015 OR 560-1839 JOSIE ALAN & NATHAN MILLER
- ⑫ 36-00080 OR 274-207 GEORGE & LINDA LARRICK
- ⑬ 36-00227.001 OR 454-1957 KEVIN & CAROL GARLEB ETAL
- ⑭ 36-00822 OR 525-337 JOHN A. LESKO
- ⑮ 36-00223.001 OR 566-3485 VALERIE TAYLOR & LUCINDA SWOPE
- ⑯ 36-00141.004 OR 420-341 EVAN & JOYCE WALL-TRUSTEES
- ⑰ 36-00141.005 OR 565-259 CLARISSA & MARK CAMPBELL JR
- ⑱ 36-00027.002 OR 516-220 MICHAEL & MARTHA FELLER
- ⑲ 36-00141.007 OR 473-2985 JAS. HUMAR
- ⑳ 36-00141.008 OR 62-716 DEIDRIE PIERCE
- ㉑ 36-00141.009 OR 62-716 DEIDRIE PIERCE
- ㉒ 36-00141.008 OR 62-716 DEIDRIE PIERCE
- ㉓ 36-00141.008 OR 62-716 DEIDRIE PIERCE
- ㉔ 36-00141.008 OR 62-716 DEIDRIE PIERCE
- ㉕ 36-00141.008 OR 62-716 DEIDRIE PIERCE
- ㉖ 36-00141.008 OR 62-716 DEIDRIE PIERCE
- ㉗ 36-00141.008 OR 62-716 DEIDRIE PIERCE
- ㉘ 36-00141.008 OR 62-716 DEIDRIE PIERCE
- ㉙ 36-00141.008 OR 62-716 DEIDRIE PIERCE
- ㉚ 36-00141.008 OR 62-716 DEIDRIE PIERCE
- ㉛ 36-00141.008 OR 62-716 DEIDRIE PIERCE
- ㉜ 36-00141.008 OR 62-716 DEIDRIE PIERCE
- ㉝ 36-00141.008 OR 62-716 DEIDRIE PIERCE
- ㉞ 36-00141.008 OR 62-716 DEIDRIE PIERCE
- ㉟ 36-00141.008 OR 62-716 DEIDRIE PIERCE
- ㊱ 36-00141.008 OR 62-716 DEIDRIE PIERCE
- ㊲ 36-00141.008 OR 62-716 DEIDRIE PIERCE
- ㊳ 36-00141.008 OR 62-716 DEIDRIE PIERCE
- ㊴ 36-00141.008 OR 62-716 DEIDRIE PIERCE
- ㊵ 36-00141.008 OR 62-716 DEIDRIE PIERCE
- ㊶ 36-00141.008 OR 62-716 DEIDRIE PIERCE
- ㊷ 36-00141.008 OR 62-716 DEIDRIE PIERCE
- ㊸ 36-00141.008 OR 62-716 DEIDRIE PIERCE
- ㊹ 36-00141.008 OR 62-716 DEIDRIE PIERCE
- ㊺ 36-00141.008 OR 62-716 DEIDRIE PIERCE
- ㊻ 36-00141.008 OR 62-716 DEIDRIE PIERCE
- ㊼ 36-00141.008 OR 62-716 DEIDRIE PIERCE
- ㊽ 36-00141.008 OR 62-716 DEIDRIE PIERCE
- ㊾ 36-00141.008 OR 62-716 DEIDRIE PIERCE
- ㊿ 36-00141.008 OR 62-716 DEIDRIE PIERCE

PRELIMINARY
MAPS IN THIS OFFICE ARE
FOR TAX PURPOSES
ONLY-VERIFY INFO. BY DEED RECORDS

8

DELMAR E. GEORGE County Engineer	HOWARD R KING cartographer	MER 1-14-10 Revised	Aerial Photo 2-G-9	TAX MAP SPENCER TOWNSHIP GUERNSEY COUNTY OHIO	Range 10 Twp 9 S10
TONY BROWN County Auditor	JBS:01 Drawn			scale 1" = 400'	