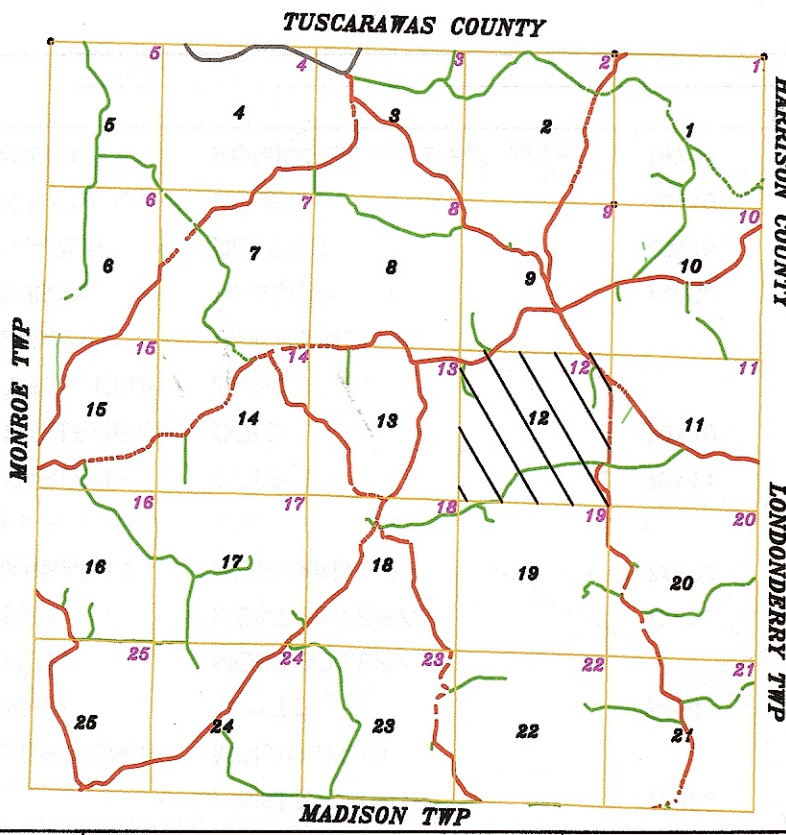
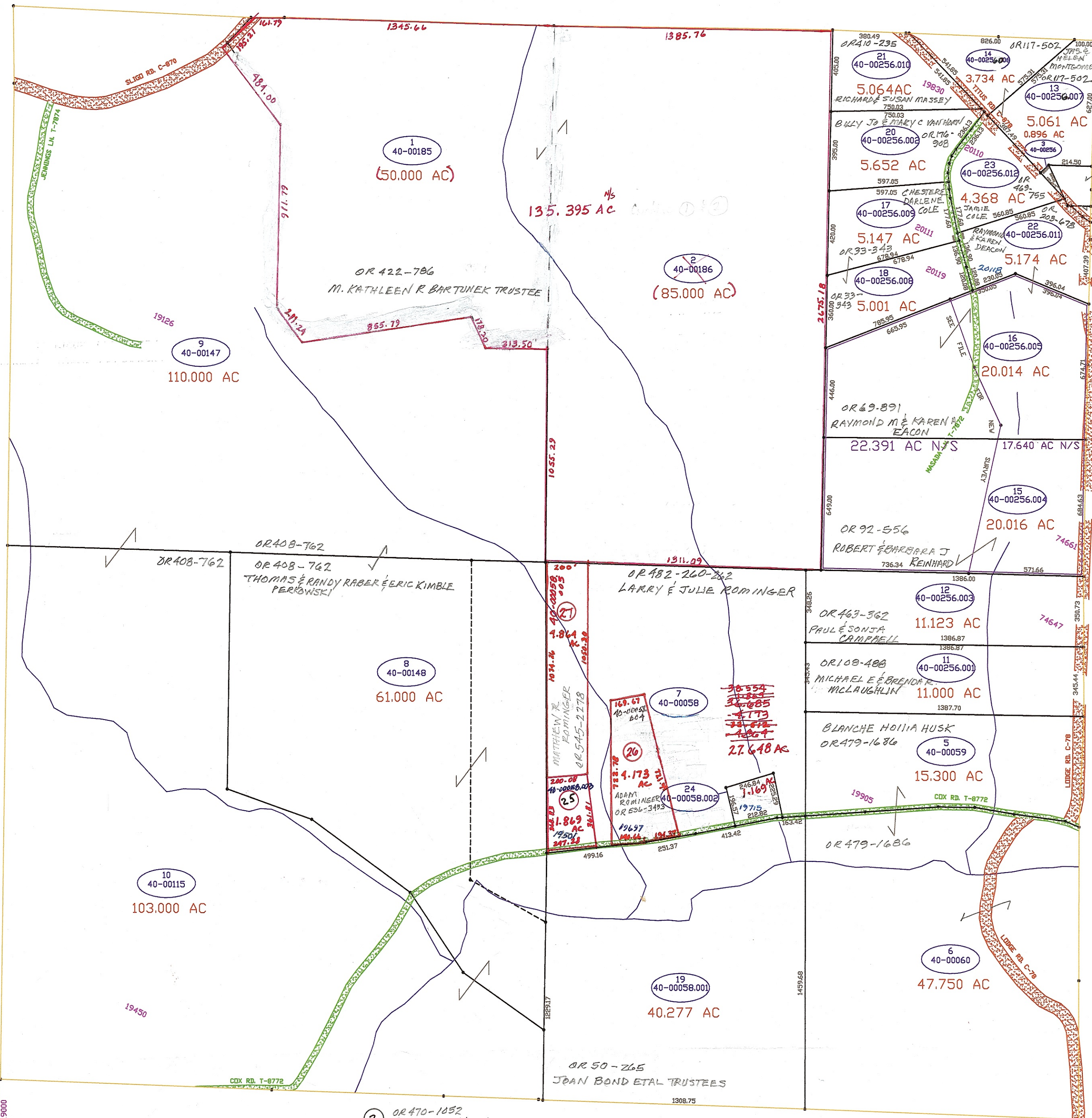


75000

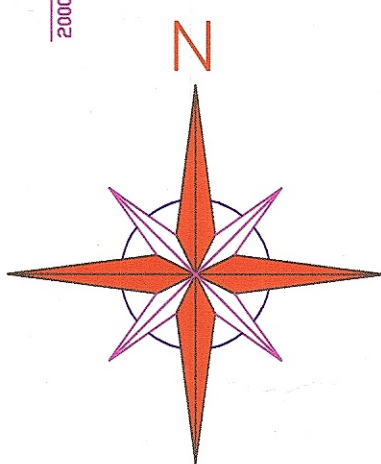
74000



- ③ OR 470-1852
JONATHAN L YOUNG
- ④ V256-196
WASHINGTON TWP TRUSTEES
- ④ OR 558-172
LARRY & JULIE ROMINGER
- ⑤ OR 432-3275
MATTHEW R ROMINGER

MAPS IN THIS OFFICE ARE
FOR TAX PURPOSES ONLY
VERIFY INFO. BY DEED RECORDS
D. GEORGE CO. ENGINEER
T. BROWN CO. AUDITOR

SCALE IN FEET
0 100 200 400 600



STATE ROADS	
COUNTY ROADS	
TOWNSHIP ROADS	
WATER	
ADDRESS	00000

12

DELMAR E. GEORGE COUNTY ENGINEER	DRAWN BY: BRENT MCMANAWAY	REVISED NOV. 25 2003	AERIAL PHOTO 2-C-96 # 102 (1986)	TAX MAP	RANGE	TOWNSHIP
WASHINGTON TOWNSHIP				14S12		
GUERNSEY COUNTY OHIO						

TONY BROWN
COUNTY AUDITOR