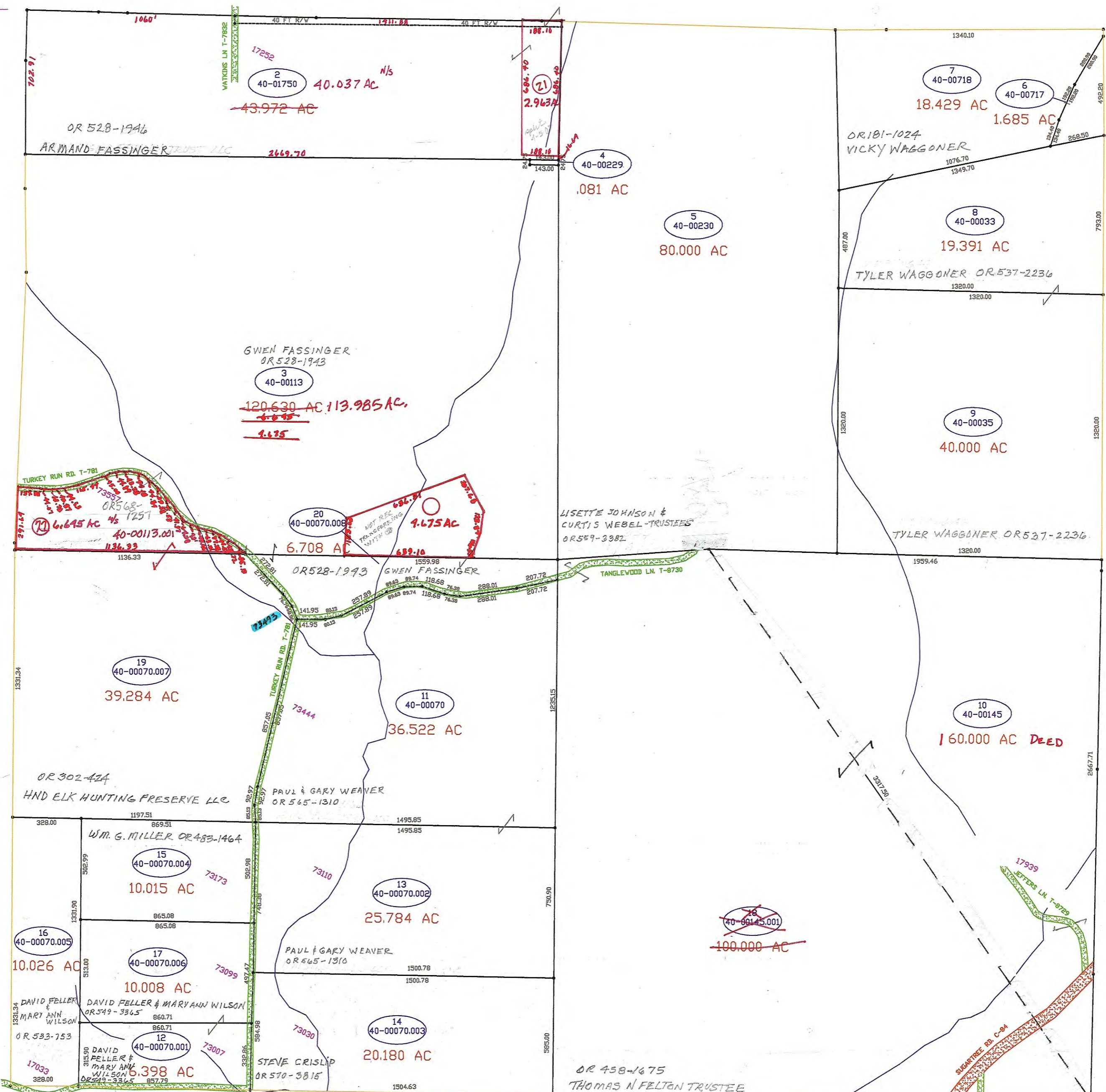
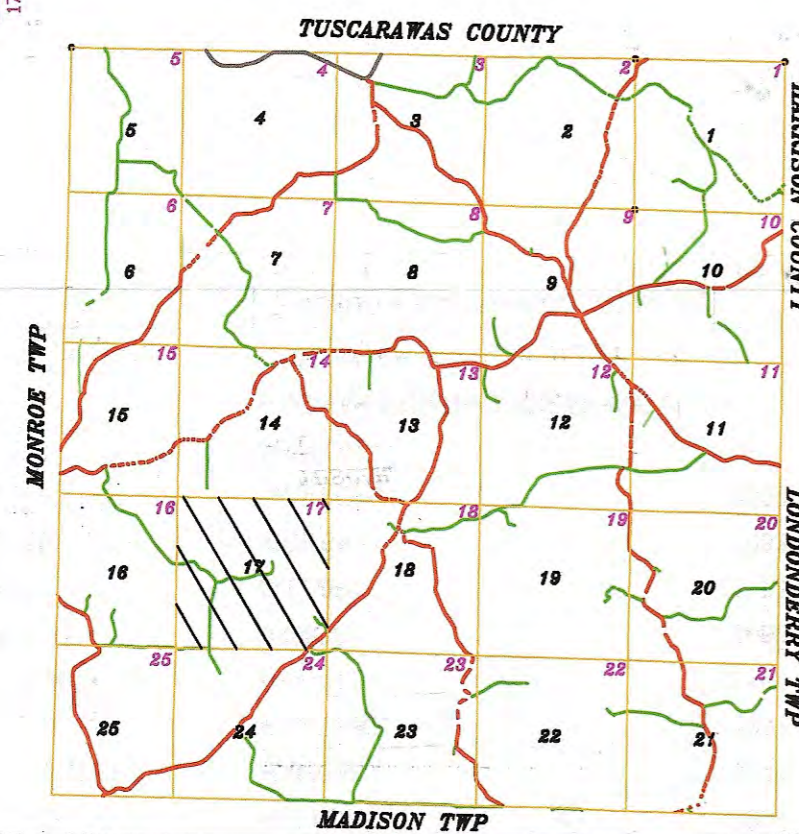


74000



73000

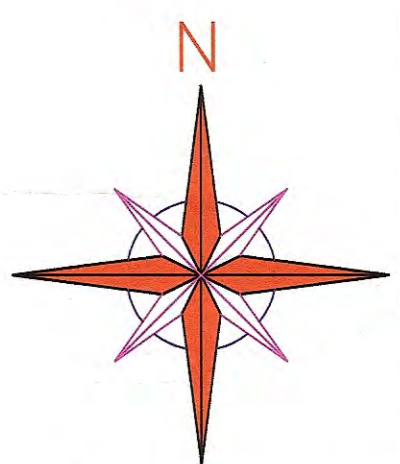
17000



- ④ OR 559-3382 LISSETTE JOHNSON & CURTIS WEBEL - TRUSTEES
- ⑥ V341-549 JOHN R. EARLENE J. GRIMSLEY
- ②① OR 528-1946 40-00852 ARMAND FASSINGER
- ②② 40-00113.001 OR 528-1257 HND ELK HUNTING PRESERVE LLC

MAPS IN THIS OFFICE ARE FOR TAX PURPOSES ONLY
 VERIFY INFO. BY DEED RECORDS
 D. GEORGE CO. ENGINEER
 T. BROWN CO. AUDITOR

SCALE IN FEET
 0 100 200 400 600



STATE ROADS	
COUNTY ROADS	
TOWNSHIP ROADS	
WATER	
ADDRESS	00000

17

DELMAR E. GEORGE COUNTY ENGINEER	DRAWN BY: BRENT MCMANAWAY	REVISED MARCH 4, 2004	AERIAL PHOTO 1-C-101 # 92 (1986)	TAX MAP	RANGE	TOWNSHIP
WASHINGTON TOWNSHIP				1 4 S 17		
GUERNSEY COUNTY OHIO						

TONY BROWN
COUNTY AUDITOR