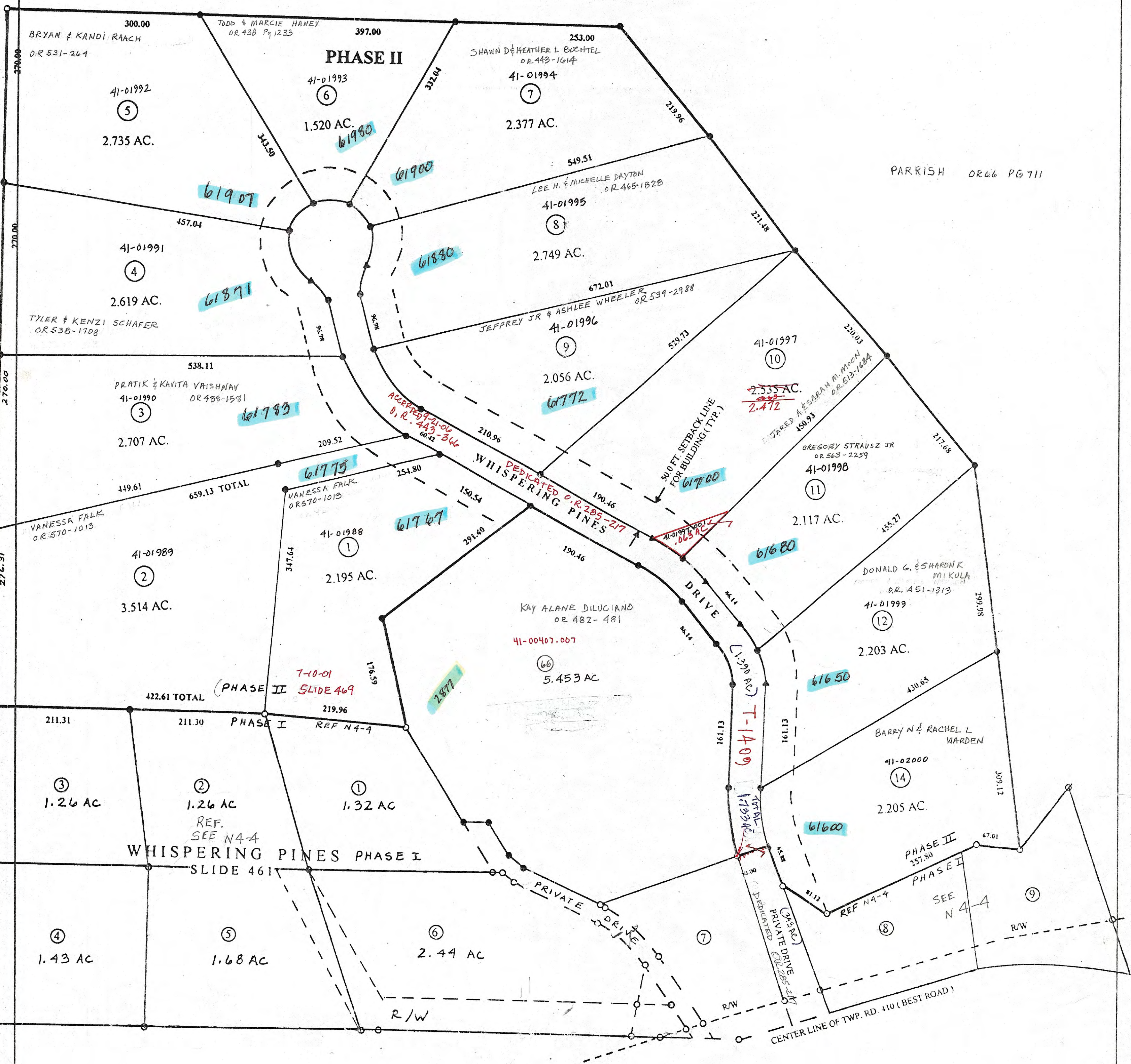
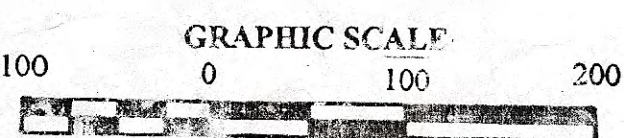


ADAMS TOWNSHIP

PARRISH DR 66 PG 711



WHISPERING PINES PHASE II
CA03 - SLIDE 469A



1 INCH = 100 FT.

PRELIMINARY
MAPS IN THIS OFFICE ARE
FOR TAX PURPOSES
ONLY-VERIFY INFO. BY DEED RECORDS

DELMAR E. GEORGE County Engineer TONY BROWN County Auditor	MER cartographer 5-25-99 Drawn	Revised Aerial Photo	TAX MAP WESTLAND TOWNSHIP scale 1" = 100' GUERNSEY COUNTY OHIO	Range Twp 41 N4-5
---	---	-----------------------------	--	----------------------