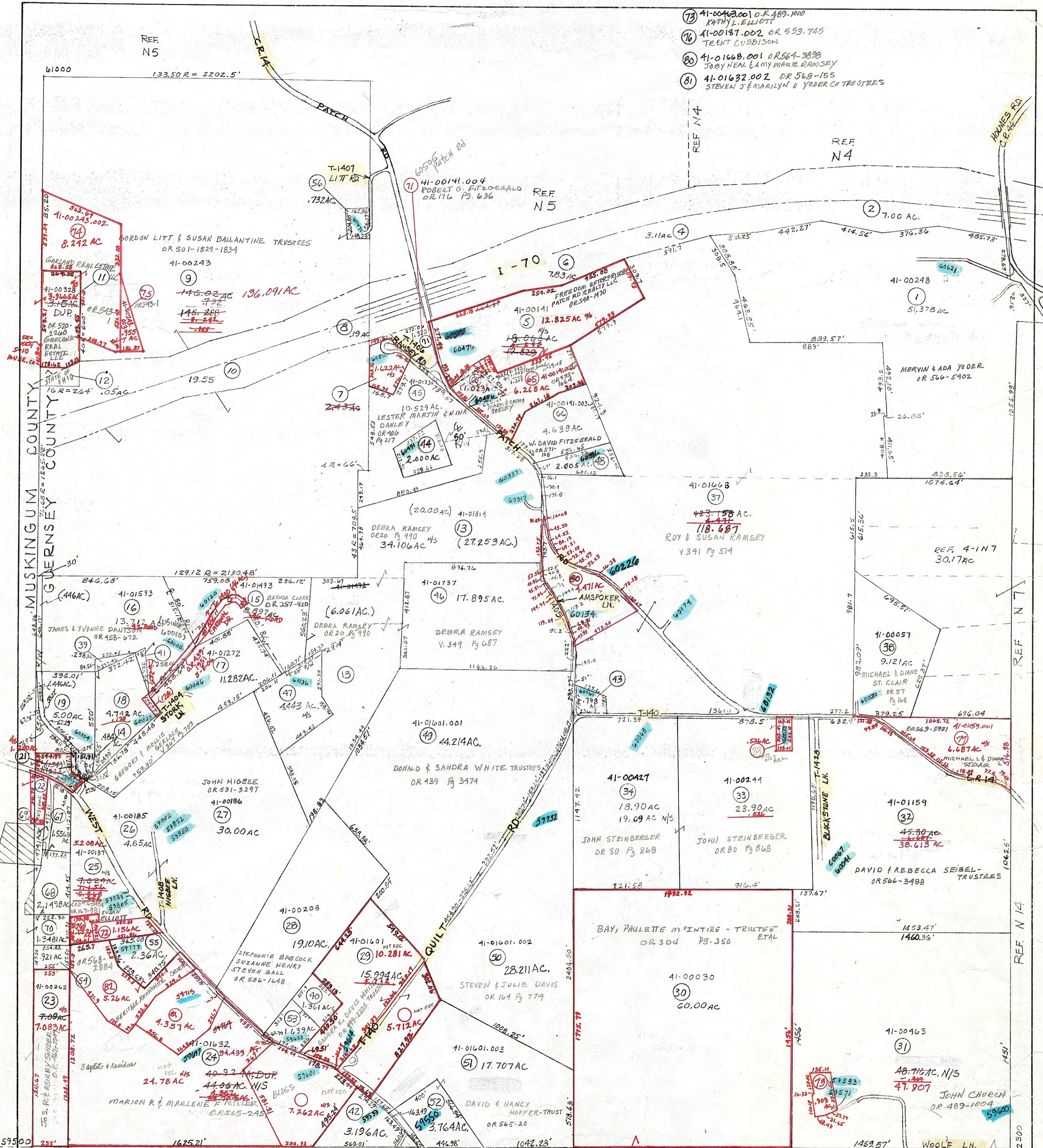


REF N5

- 73 41-00463.001 O.R. 489-1000 KATHY L. ELLIOTT
- 76 41-00187.002 O.R. 593-745 TRENT CUBBISON
- 80 41-01668.001 O.R. 564-3898 JOBY NEAL & AMY MARIE RAMSEY
- 81 41-01632.002 O.R. 568-155 STEVEN & MARILYN D. YODER CO. TRUSTEES



PRELIMINARY
 MAPS IN THIS OFFICE ARE
 FOR TAX PURPOSES
 ONLY-VERIFY INFO. BY DEED RECORDS

- | | | | | |
|---|---|---|--|--|
| <ul style="list-style-type: none"> 7 41-00339 O.R. 499-2449 JAS. D. ROWLAND & JOANN McCLELLAND 18 41-01620 O.R. 499-1 MALL & DORIS TAYLOR 19 41-01157 O.R. 448-1067 MARY BRADFORD 21 41-00269 O.R. 410-127 JERRY L. FITZGERALD 24 41-02017 DEBRA S. RAMSEY O.R. 20-990 | <ul style="list-style-type: none"> 22 41-00293 O.R. 518 Pg 2783 LINDSAY ALEX WAYSON 39 41-01594 O.R. 400-2345 RAYNALL & DORIS TAYLOR 40 41-01602 O.R. 452 Pg 95 JUSTIN & TABATHA GEARY 41 41-01621 O.R. 450-672 JAMES & YVONNE DANISON 42 41-01633 O.R. 536-1648 STEPHANIE BABCOCK | <ul style="list-style-type: none"> 43 41-01674 O.R. 451 Pg. 2700 MICHAEL & RHONDA HOLLOWAY 44 41-01733 O.R. 406 Pg 217 LESTER MARTIN & NINA DANLEY 47 41-01815 O.R. 504-1200 BRAD McLOUGHLIN 48 41-00141.001 O.R. 509-2582 W.M. D & JAMI FITZGERALD | <ul style="list-style-type: none"> 52 41-01601 O.R. 181 Pg. 843 DAVID & NANCY HOFFER-TRUSTEES 53 41-00104 O.R. 452 Pg 95 JUSTIN & TABATHA GEARY 54 41-00293.001 O.R. 518 Pg 2783 LINDSAY ALEX WAYSON 55 41-01632.001 O.R. 534-2607 HERITAGE MENNONITE CHURCH 56 41-00243.001 O.R. 453 Pg 8339 KENNETH J. McCallum | <ul style="list-style-type: none"> 65 41-00141.002 O.R. 534-219 JOHN & LORI REVERCOMB 67 41-00293.003 O.R. 518 Pg 2783 LINDSAY ALEX WAYSON 68 41-00293.004 O.R. 518 Pg 2783 LINDSAY ALEX WAYSON 69 41-00293.005 O.R. 518 Pg 2783 LINDSAY ALEX WAYSON 70 41-00293.002 O.R. 518-2783 LINDSAY ALEX WAYSON 72 41-00187.001 O.R. 493-1474 |
|---|---|---|--|--|