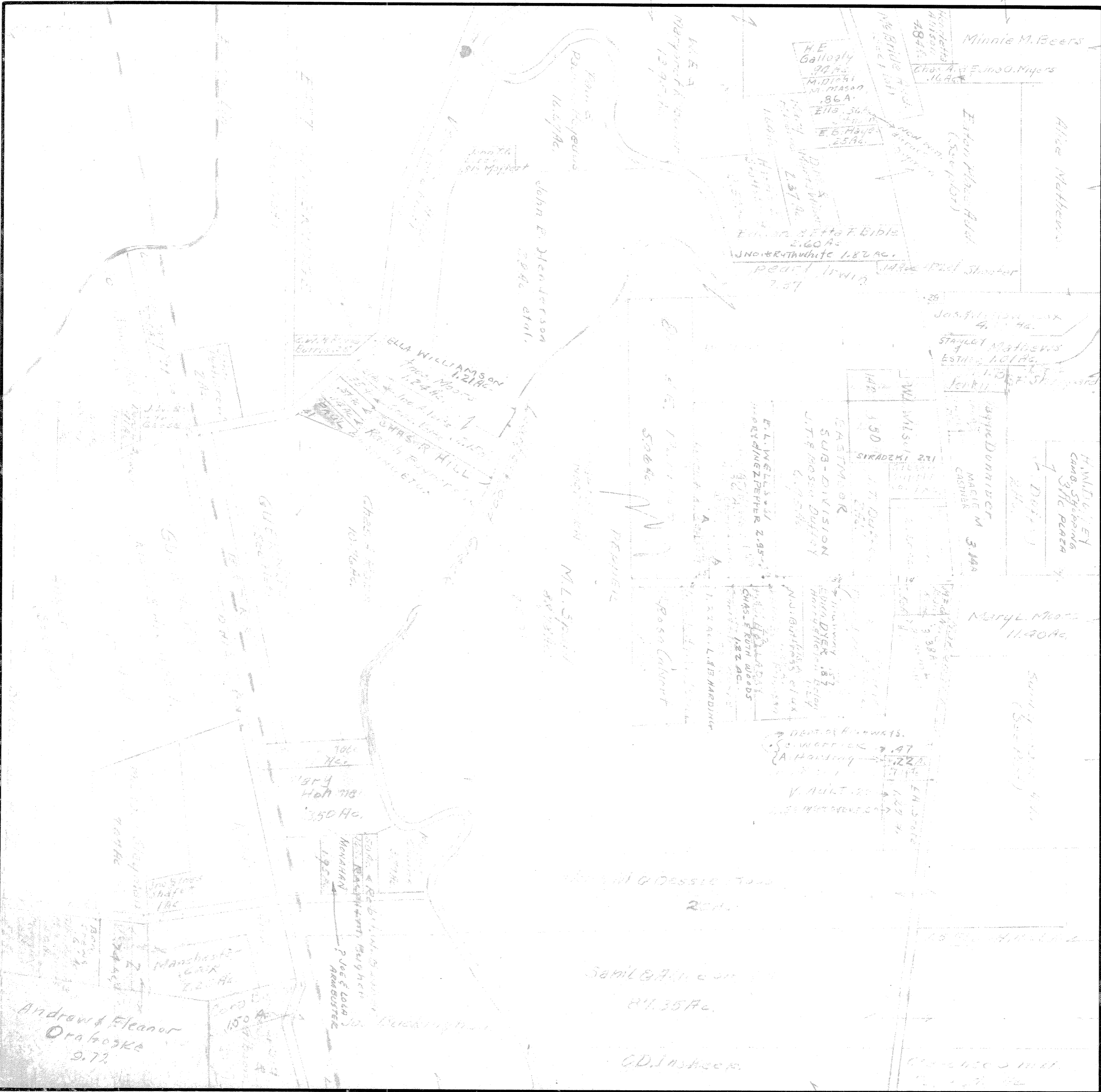


CAMBRIDGE

TOWN 2 RANGE 3



Minnie M. Beers

Chas. A. & F. J. O. Myers
16.40 Ac.

Alice Mathews

Eston Place Add.
(See plat)

W. B. Rider

H.E. Gallogly
90.43
M. Mason
.86 A.
Ella
E.B. Myers
25.96

Edna & F. Bible
2.60 Ac.
Jno. & R. White 1.82 Ac.
Fred. Irwin
7.87

Jos. & J. O. O'Neil
4.10 Ac.

Stanley Matthews
Esther 1.61 Ac.

Benji

H. Miller
Camb. Springs
316 Plaza

J. Duffy

Jayme Dunriver
Mae M. 3.44
Cashier

Mary L. Moore
11.90 Ac.

Sam. Moore
(See plat)

E. L. Wells
Mary & Z. Pether 2.95
J. T. & M. Duffy
6.90 Ac.

W. L. & J. L. O'Neil
Chas. E. Roth Woods
1.82 Ac.

DEPT. OF HIGHWAYS
S. WOFFER 2.47
A. H. O'Neil
V. Ault
1.82 Ac.

Sam. L. O'Neil
87.35 Ac.

G. D. Insheep

John E. Jensen
29.40 Ac.

John E. Jensen
29.40 Ac.

Ella Williamson
Fred. Moore
1.24 Ac.

SHAW'S HILL
Randy P. O'Neil
et al.

Chas. E. O'Neil
10.46 Ac.

1914
H. O'Neil
3.50 Ac.

Manchester
1.20 Ac.

Andrew & Eleanor
Orabozke
2.72