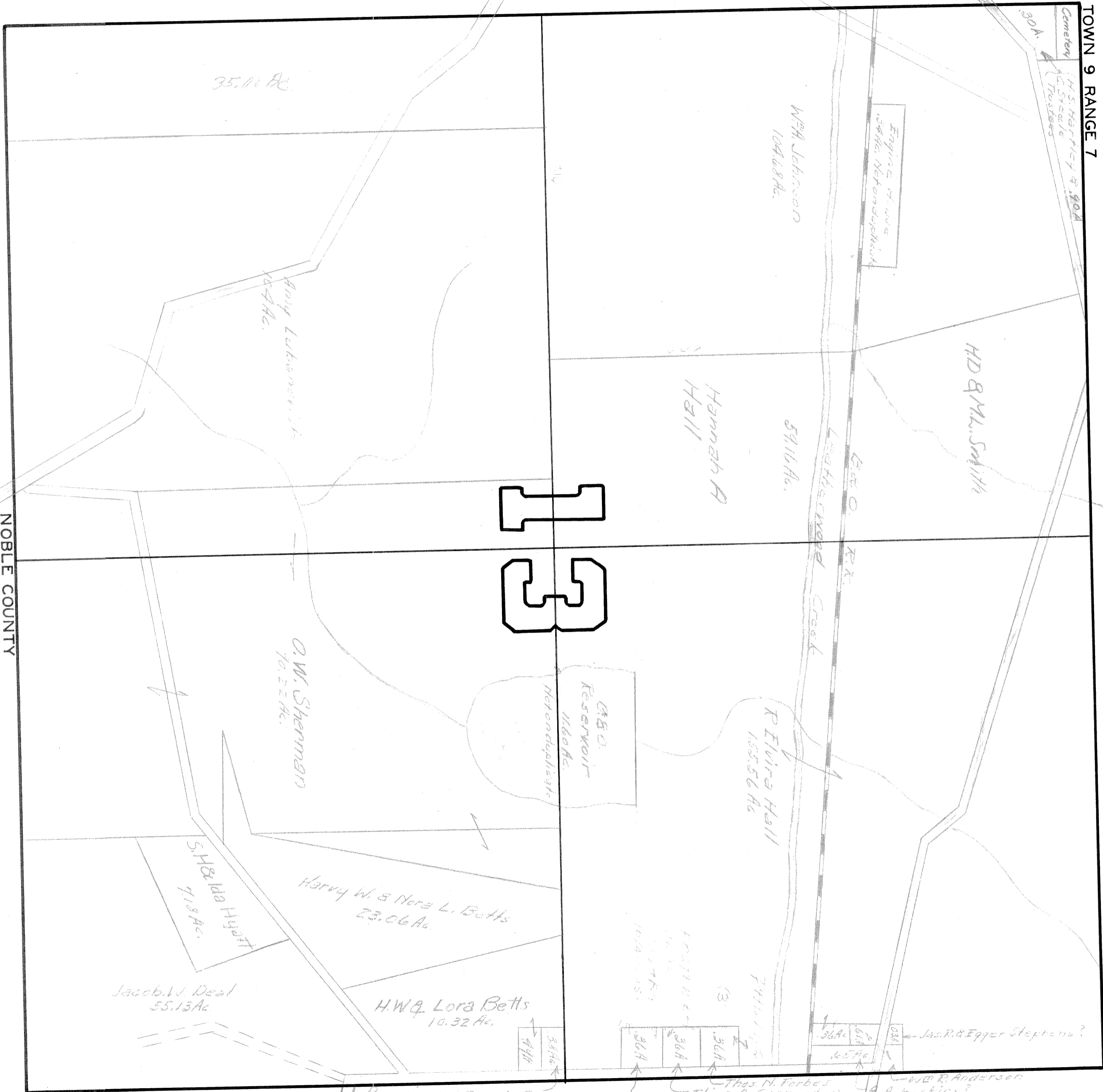


MILLWOOD

TOWN 9 RANGE 7



Cemetery
M.S. Hartley & S. 904
C. Steele Trustees

1595

304

Engine House
J. H. McDonald

Wm. Johnson
104.68 Ac.

35.01 Ac.

Ang Libermanish
18.4 Ac.

H.D. & M.L. Smith

Hannah A
Hall

54.16 Ac.

13

Leatherwood Creek
B&O R.R.

G.B.O.
Reservoir
116.6 Ac.
Not on duplicate

R. Elvira Hall
135.56 Ac.

O.W. Sherman
70.22 Ac.

Harvy W. & Nora L. Betts
23.66 Ac.

S.H. & J.A. Hyatt
4.18 Ac.

Jacob W. Deal
55.13 Ac.

H.W. & Lora Betts
10.32 Ac.

(3)
36A
36A
36A
36A
36A
109.48 Ac.

36A
36A
65 Ac.

Jas. R. & Egger Stephens?

R. Raymond & Jabo Clary

Thos. H. Forbes
Eliza A. Garpenter
Geo. Forbes.

Wm. R. Anderson
A. A. Huskins?

NOBLE COUNTY

1573

1573

1177

2657