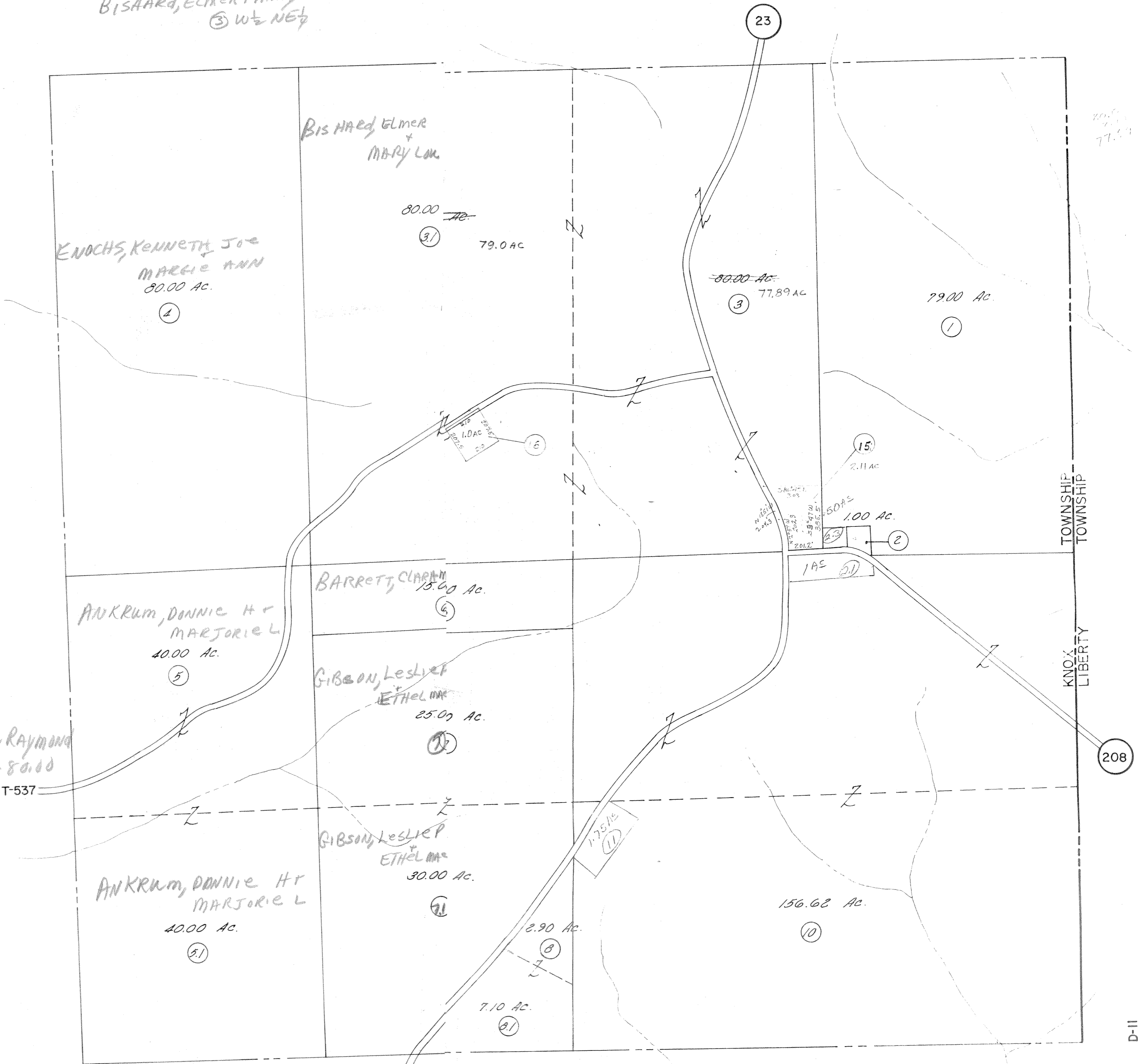


CASTOR, MARY E
 A-79.00 ① E 1/2 NE 1/4
 BISAARD, ELMER + MARY LOU
 ③ W 1/2 NE 1/4



77.50

TOWNSHIP
 TOWNSHIP
 KNOX
 LIBERTY

208

D-11

Prepared
 By



DICKINSON
 DRAFTING

33 E. THIRD AVE., COLUMBUS 1, OHIO

GRAY, E.W. + ELIZE
 A-156.62
 S.E. 1/4 ⑩

MILLER, GLEN + ALLA
 A-2.90 ⑧ ⑨

KNOX

GRAY, THOMAS W. +
 L. DEANNE
 A-1.75 S.E. 1/4 ⑨

2-6-23
 43511
 SEC. 11