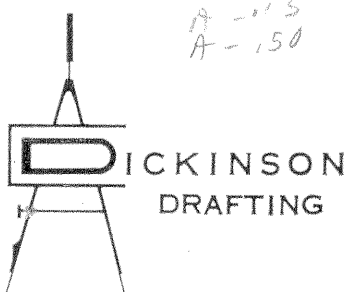
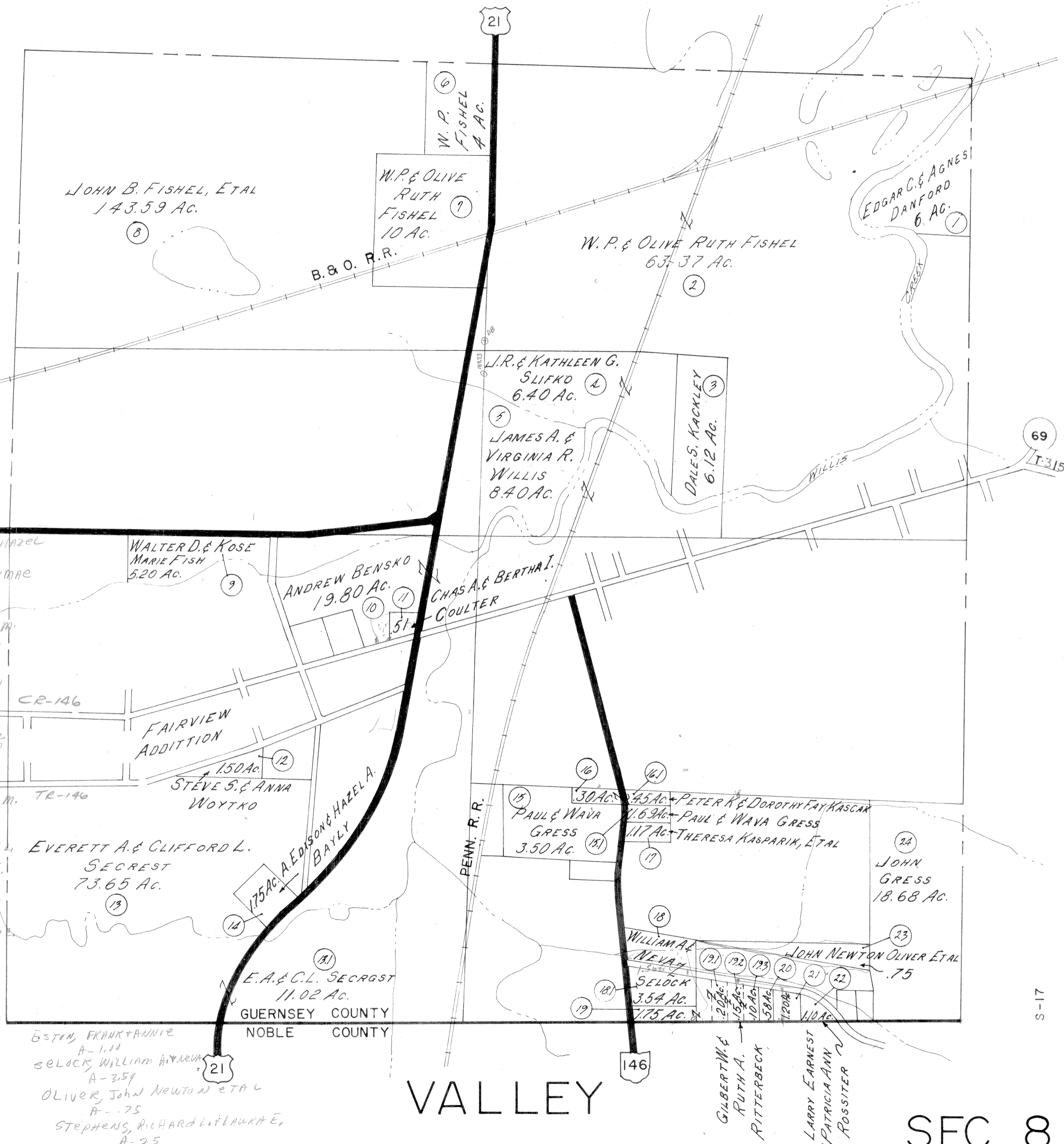


Prepared
By



33 E. THIRD AVE., COLUMBUS 1, OHIO



JOHN B. FISHEL, ETAL
143.59 AC.

W. P. FISHEL
4 AC.

W. P. & OLIVE
RUTH
FISHEL
10 AC.

EDGAR C. & AGNES
DANFORD
6 AC.

W. P. & OLIVE RUTH FISHEL
63.37 AC.

B. & O. R.R.

L. R. & KATHLEEN G.
SLIFKO
6.40 AC.

DALE S. KACKLEY
6.12 AC.

JAMES A. &
VIRGINIA R.
WILLIS
8.40 AC.

146

BAYLY, A. EDISON & HAZEL
A-1.00
TROTTS, SHIRLEY MAE
A-14.69
HIVELY, EDWARD M.
A-26.05
PHYLLIS

WALTER D. & KOSE
MARIE FISH
5.20 AC.

ANDREW BENSKO
19.80 AC.

CHAS. A. & BERTHA I.
COULTER

GRESS, ANDREW
A-23.81
T-146

CR-146

FAIRVIEW
ADDITION

KOSHOCK, EUGENE
DAVID
A-36.00

STEVE S. & ANNA
WOYTKO
150 AC.

SECRET, MERLIND M.
A-40
A-10
TR-146

EVERETT A. & CLIFFORD L.
SECRET
73.65 AC.

175 AC. A. EDISON & HAZEL A.
BAYLY

SECRET, CLIFFORD L.
A-26
RUBY E.
A-22

SECRET, JANET
A-16
SECRET, DALTON
A-1.59

QUAKER STATE OIL
REFINING CORP.
A-.45

GERMAN, SUSAN
A-115
A-150

BSTON, FRANK & ANNIE
A-1.10
SELOCK, WILLIAM A.
A-3.59

OLIVER, JOHN NEWTON ETAL
A-.75

STEPHENS, RICHARD L. & LAURA E.
A-25

PENN. R.R.

PAUL & WAVA
GRESS
3.50 AC.

30 AC. 45 AC. PETER R. & DOROTHY FAY KASPAR
117 AC. PAUL & WAVA GRESS
THERESA KASPARIK, ETAL

JOHN
GRESS
18.68 AC.

WILLIAM A. E.
NEVA
SELOCK
3.54 AC.

JOHN NEWTON OLIVER ETAL
.75

SELOCK
7.75 AC.

GILBERT W. &
RUTH A.
RITTERBECK

LARRY EARNEST
& PATRICIA ANN
ROSSITER

VALLEY

SEC. 8

S-17