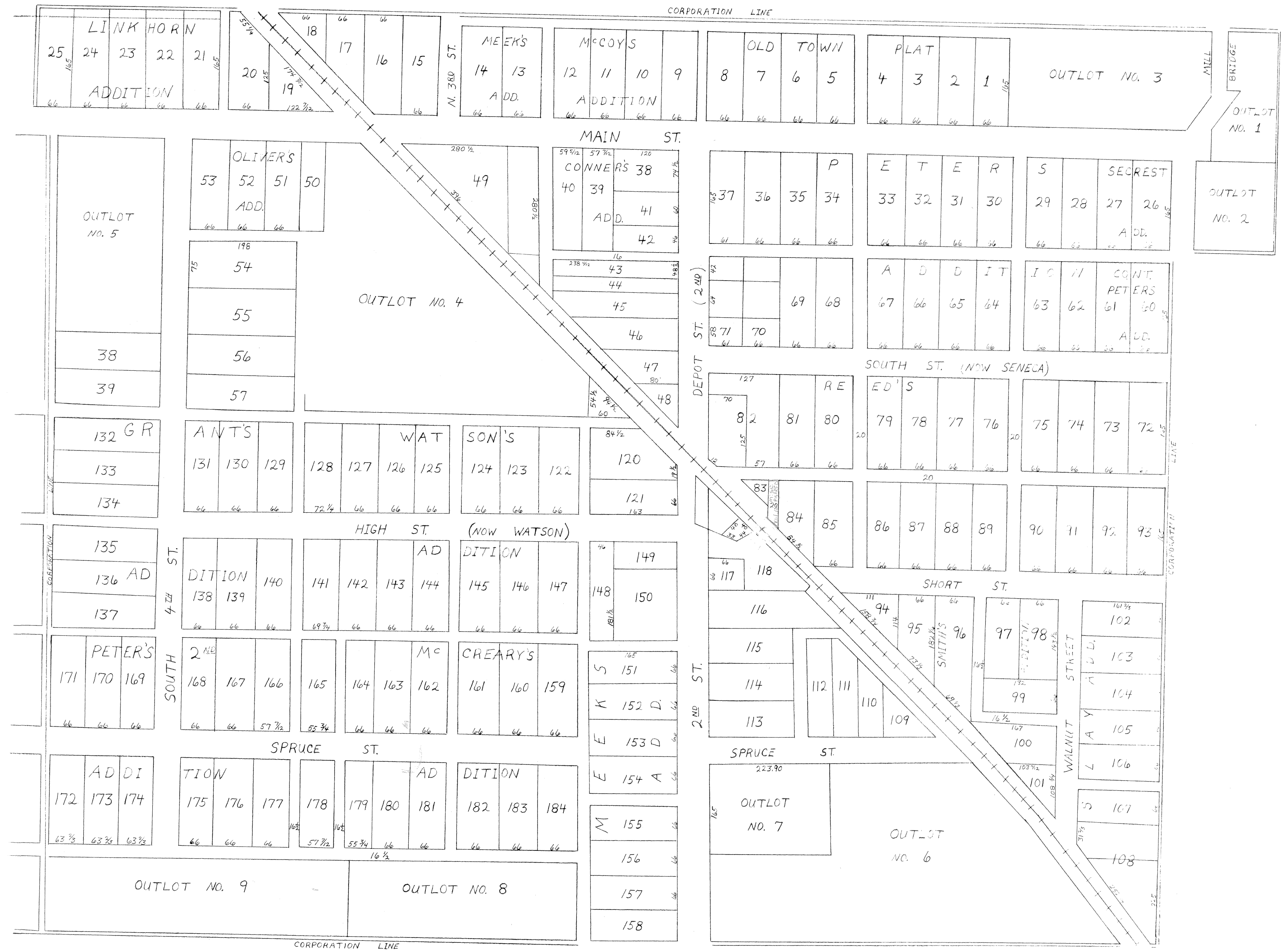


PLAT OF THE INCORPORATED VILLAGE OF BYESVILLE OHIO, GUE. COUNTY



PLAT OF THE INCORPORATED VILLAGE OF BYESVILLE OHIO GUE. COUNTY

THE ESTABLISHED COR. STONE OF THE INCORPORATED VILLAGE OF BYESVILLE, OHIO IS SET ON THE RANGE LINE BETWEEN RANGES 2 & 3 AT THE COR. OF SECTION 6 & 15 OF TWP. 1 IN RANGE 2 ON MAIN ST. NEAR THE S.E. COR. OF LOT NO. 9.

APPROVED BY THE COUNCIL OF THE INCORPORATED VILLAGE OF BYESVILLE, O.
AUG. 27th, 1887

B.R. LEE, CORPORATION CLERK

ATTEST: J.K. CASEY RECORDER

