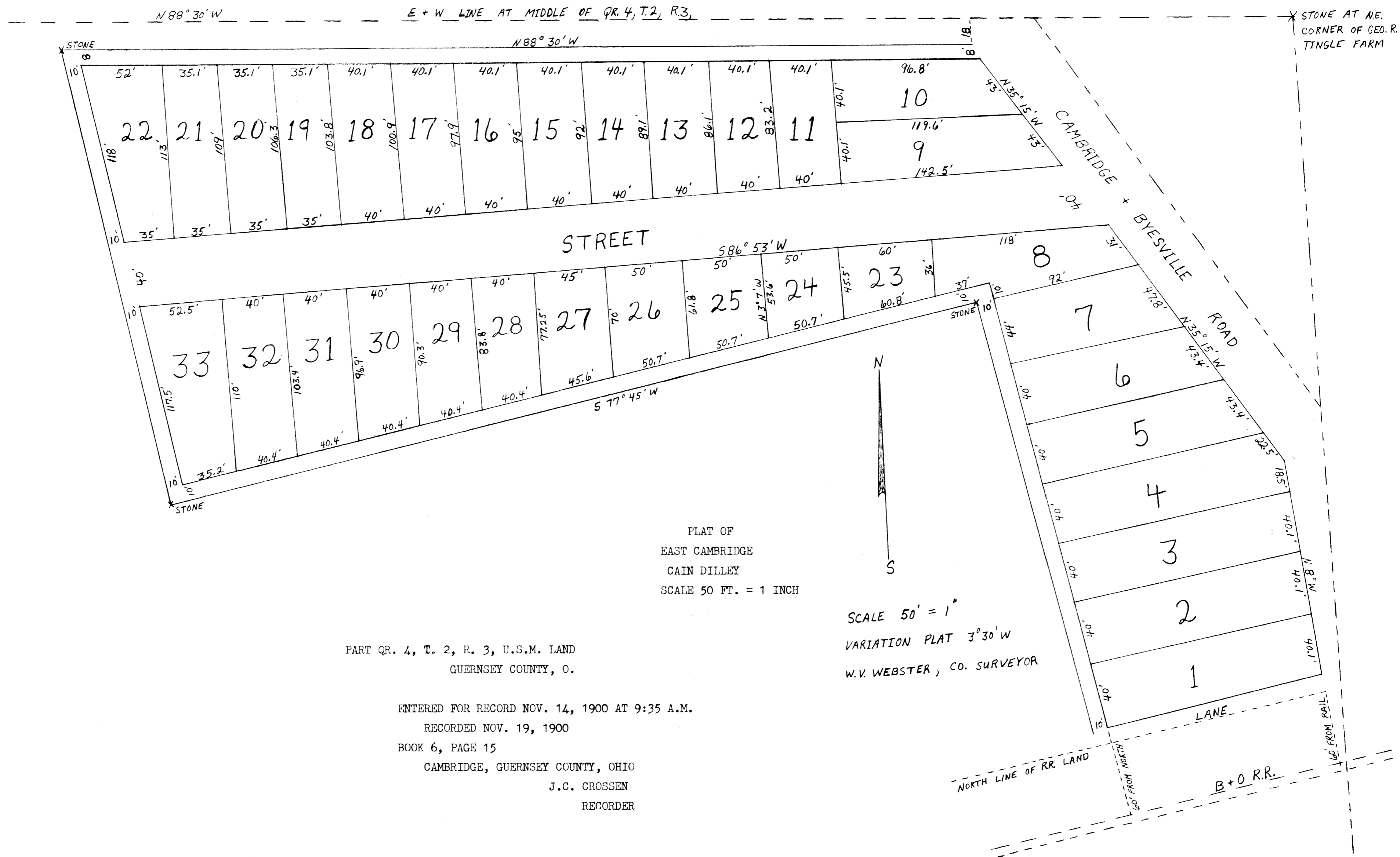
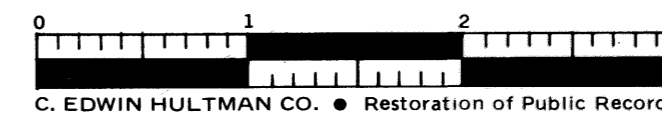


PLAT OF  
EAST CAMBRIDGE

CAIN DILLEY



PLAT OF  
EAST CAMBRIDGE  
CAIN DILLEY  
SCALE 50 FT. = 1 INCH

SCALE 50' = 1"  
VARIATION PLAT 3°30'W  
W.V. WEBSTER, CO. SURVEYOR

PART QR. 4, T. 2, R. 3, U.S.M. LAND  
GUERNSEY COUNTY, O.

ENTERED FOR RECORD NOV. 14, 1900 AT 9:35 A.M.

RECORDED NOV. 19, 1900

BOOK 6, PAGE 15

CAMBRIDGE, GUERNSEY COUNTY, OHIO

J.C. CROSSEN

RECORDER