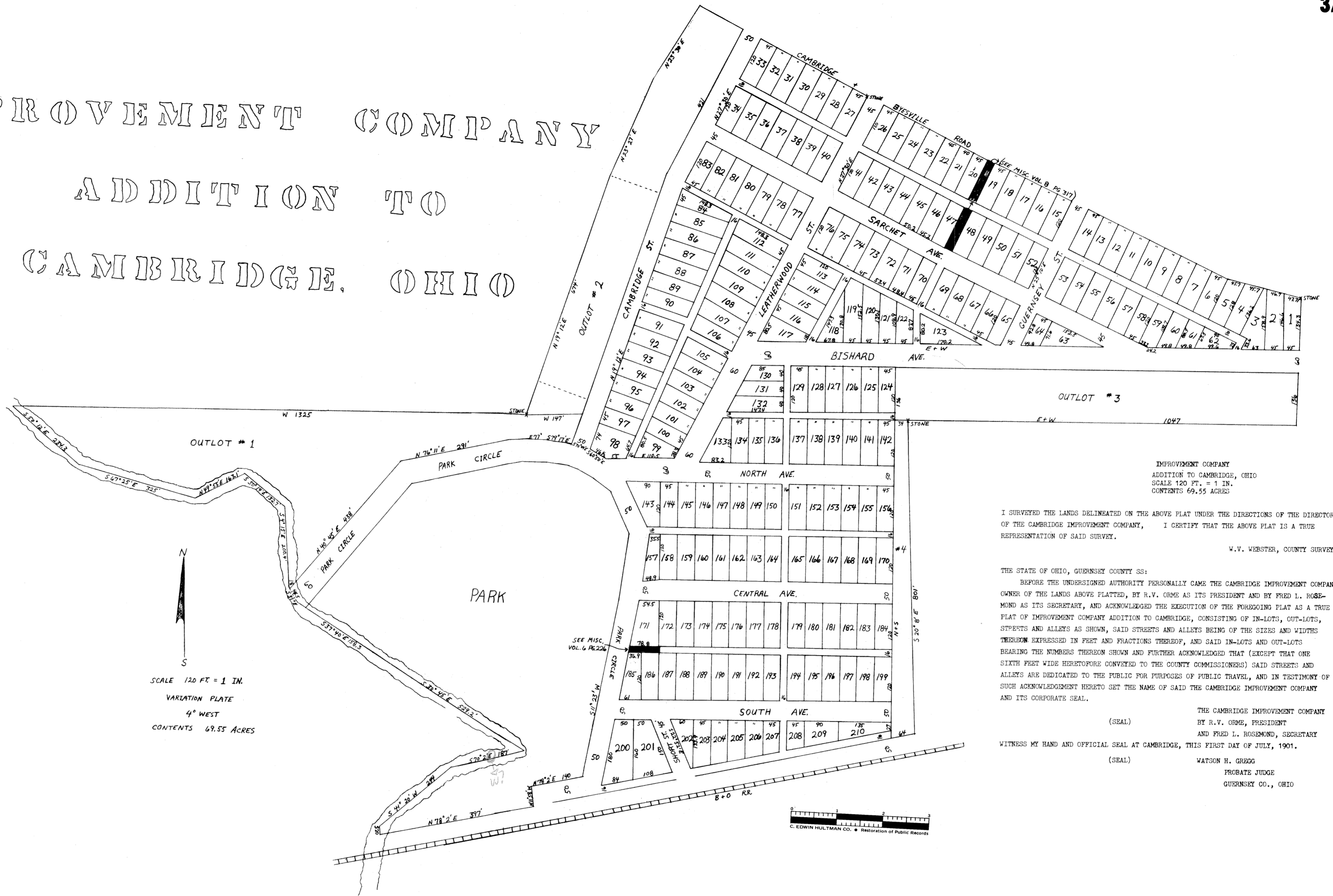


IMPROVEMENT COMPANY

ADDITION TO CAMBRIDGE, OHIO



N
 S
 SCALE 120 FT. = 1 IN.
 VARIATION PLATE
 4° WEST
 CONTENTS 69.55 ACRES

IMPROVEMENT COMPANY
 ADDITION TO CAMBRIDGE, OHIO
 SCALE 120 FT. = 1 IN.
 CONTENTS 69.55 ACRES

I SURVEYED THE LANDS DELINEATED ON THE ABOVE PLAT UNDER THE DIRECTIONS OF THE DIRECTORS OF THE CAMBRIDGE IMPROVEMENT COMPANY, I CERTIFY THAT THE ABOVE PLAT IS A TRUE REPRESENTATION OF SAID SURVEY.

W.V. WEBSTER, COUNTY SURVEYOR

THE STATE OF OHIO, GUERNSEY COUNTY SS:
 BEFORE THE UNDERSIGNED AUTHORITY PERSONALLY CAME THE CAMBRIDGE IMPROVEMENT COMPANY OWNER OF THE LANDS ABOVE PLATTED, BY R.V. ORME AS ITS PRESIDENT AND BY FRED L. ROSEMOND AS ITS SECRETARY, AND ACKNOWLEDGED THE EXECUTION OF THE FOREGOING PLAT AS A TRUE PLAT OF IMPROVEMENT COMPANY ADDITION TO CAMBRIDGE, CONSISTING OF IN-LOTS, OUT-LOTS, STREETS AND ALLEYS AS SHOWN, SAID STREETS AND ALLEYS BEING OF THE SIZES AND WIDTHS THEREON EXPRESSED IN FEET AND FRACTIONS THEREOF, AND SAID IN-LOTS AND OUT-LOTS BEARING THE NUMBERS THEREON SHOWN AND FURTHER ACKNOWLEDGED THAT (EXCEPT THAT ONE SIXTH FEET WIDE HERETOFORE CONVEYED TO THE COUNTY COMMISSIONERS) SAID STREETS AND ALLEYS ARE DEDICATED TO THE PUBLIC FOR PURPOSES OF PUBLIC TRAVEL, AND IN TESTIMONY OF SUCH ACKNOWLEDGMENT HERETO SET THE NAME OF SAID THE CAMBRIDGE IMPROVEMENT COMPANY AND ITS CORPORATE SEAL.

(SEAL) THE CAMBRIDGE IMPROVEMENT COMPANY
 BY R.V. ORME, PRESIDENT
 AND FRED L. ROSEMOND, SECRETARY
 WITNESS MY HAND AND OFFICIAL SEAL AT CAMBRIDGE, THIS FIRST DAY OF JULY, 1901.
 (SEAL) WATSON H. GREGG
 PROBATE JUDGE
 GUERNSEY CO., OHIO

C. EDWIN HULTMANN CO. • Restoration of Public Records