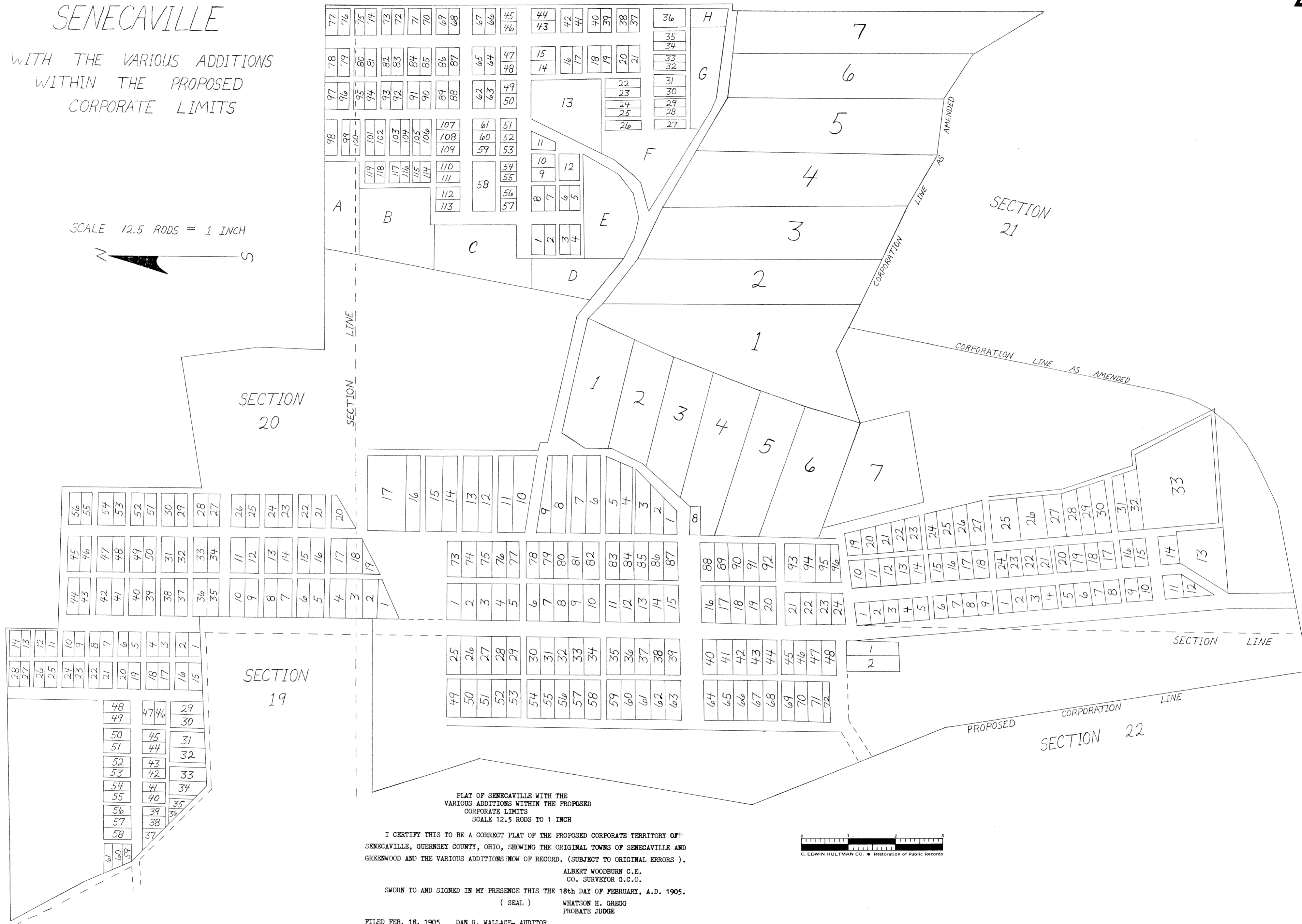


# PLAT OF SENECAVILLE

WITH THE VARIOUS ADDITIONS  
WITHIN THE PROPOSED  
CORPORATE LIMITS

SCALE 12.5 RODS = 1 INCH



PLAT OF SENECAVILLE WITH THE  
VARIOUS ADDITIONS WITHIN THE PROPOSED  
CORPORATE LIMITS  
SCALE 12.5 RODS TO 1 INCH

I CERTIFY THIS TO BE A CORRECT PLAT OF THE PROPOSED CORPORATE TERRITORY OF  
SENECAVILLE, GUERNSEY COUNTY, OHIO, SHOWING THE ORIGINAL TOWNS OF SENECAVILLE AND  
GREENWOOD AND THE VARIOUS ADDITIONS NOW OF RECORD. (SUBJECT TO ORIGINAL ERRORS).

ALBERT WOODBURN C.E.  
CO. SURVEYOR G.C.O.

SWORN TO AND SIGNED IN MY PRESENCE THIS THE 18th DAY OF FEBRUARY, A.D. 1905.

( SEAL ) WHATSON H. GREGG  
PROBATE JUDGE



FILED FEB. 18, 1905 DAN R. WALLACE, AUDITOR  
FOR TRANSCRIPT SEE PAGES 9-10 AND 19 OF THIS VOLUME.  
FILED NOV. 3, 1906 AT 10 A.M.  
RECORDED DEC. 20, 1906  
ATTEST FRANK P. ARNOLD, RECORDER