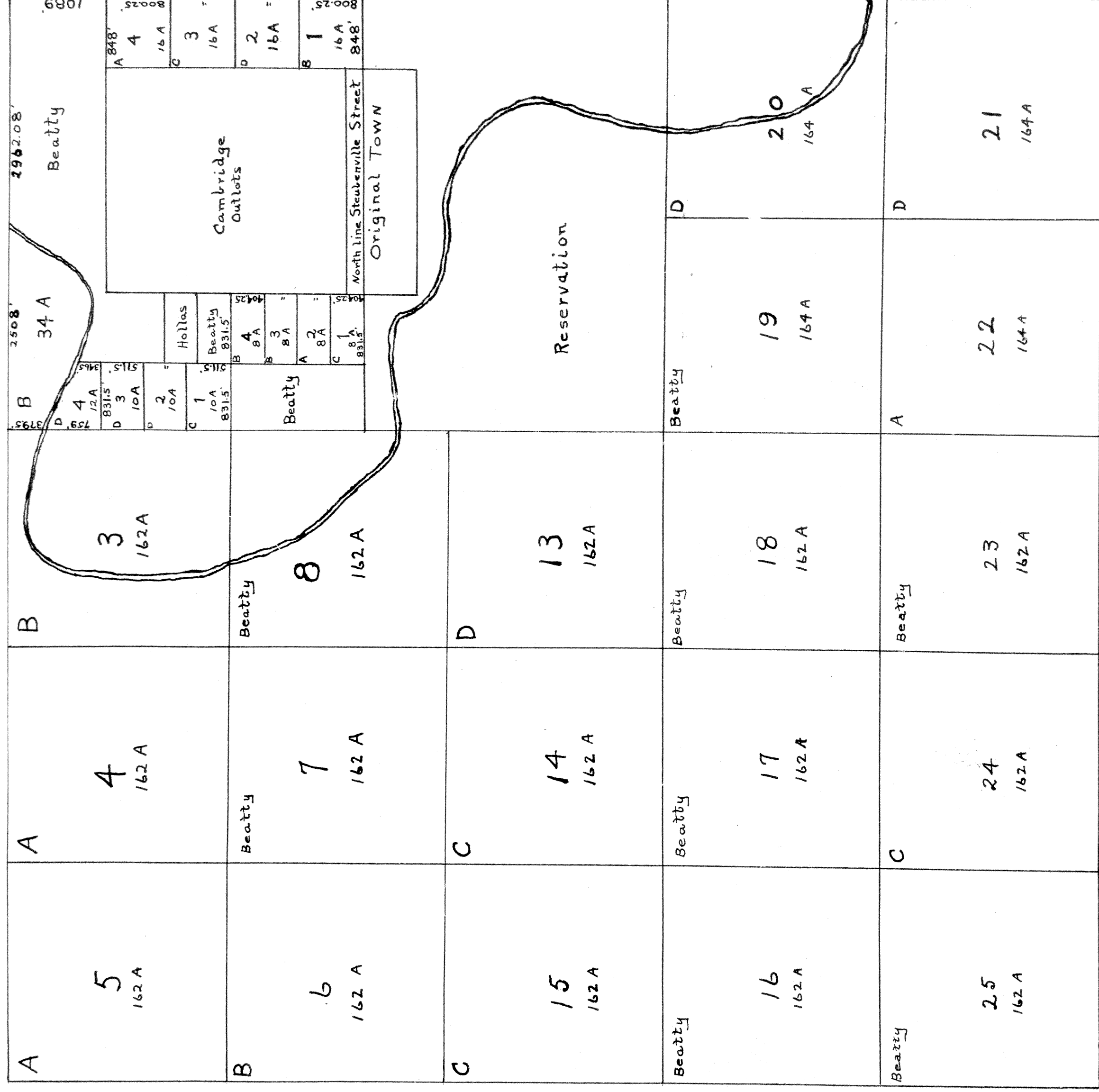


Partition  
**JACOB GOMBER ESTATE**  
 Vol. C page 381 Common Pleas Record  
 Range 3, Township 2, Gr. Tp 3

Lots marked "A" decreed to Catherine Moore.  
 " " " " Sarah Metcalf.  
 " " " " Maria Gamber  
 " " " " George Metcalf



Scale - 5 in = 1 mile.  
 Feb. 7, 1915  
 Edmund Hawthorne  
 District Assessor.



Tax Plat

Filed March 19, 1915.

under authority of Sec. 5556

Edmund Hawthorne  
 District Assessor

Transfer not necessary

J. C. White  
 County Auditor

Entered for record at 11-20 A.M.

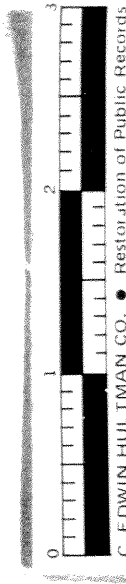
March 19, 1915. Recorded Mar.

G. F. Henry  
 Recorder.

25-1915.

Fee \$ 5.00

Attest: H. S. Henry, Recorder,  
 By J. G. Blanchet, Deputy



C. EDWIN HULTMAN CO. • Restoration of Public Records