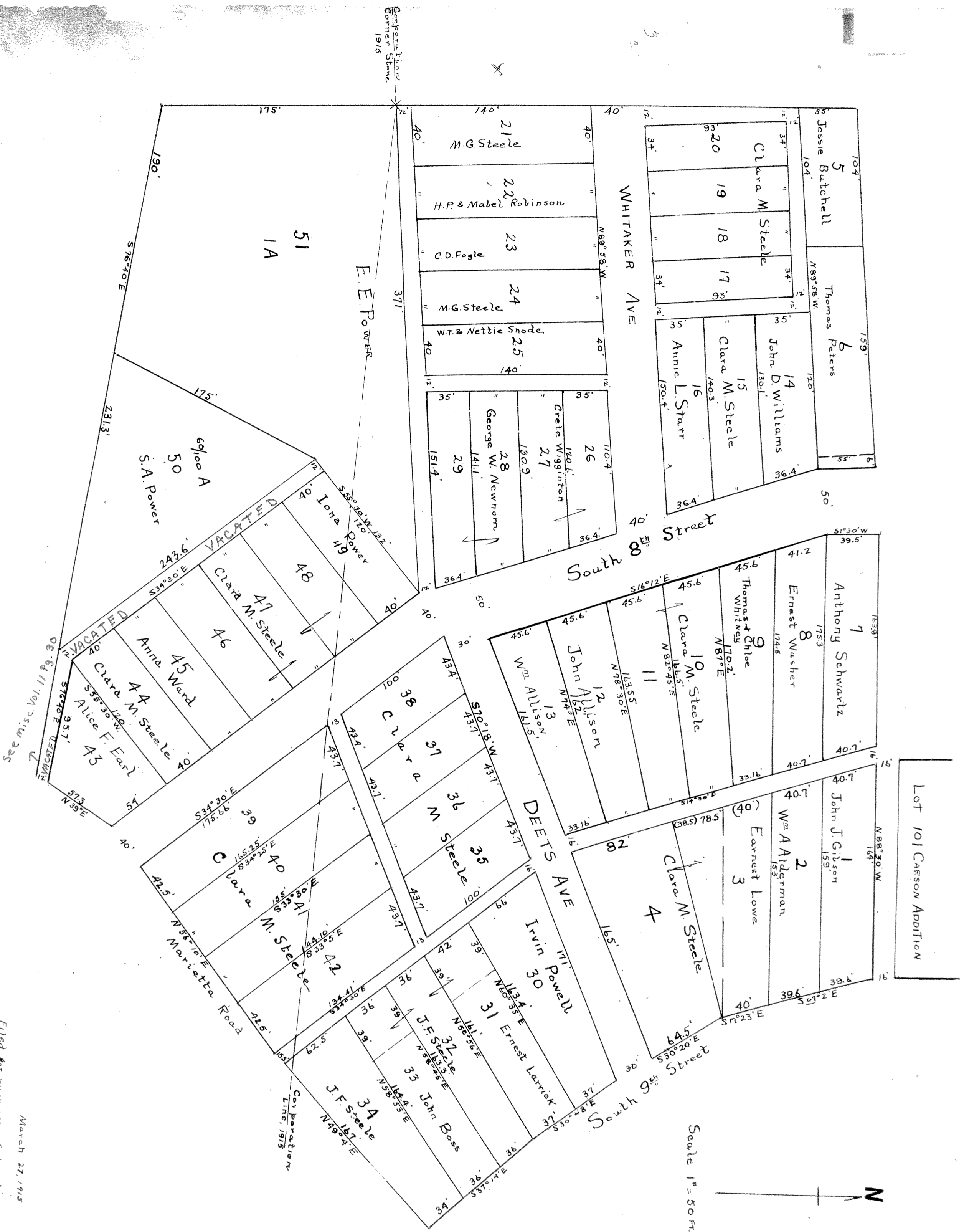


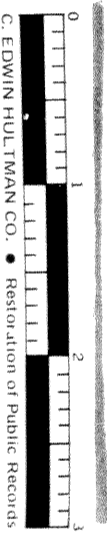
# DEETS + STEELE'S ADDITION



Lot 101 CARSON ADDITION



Scale 1" = 50 FT.



March 27, 1915  
 Filed for purposes of taxation under  
 Section 556 General Code  
 Edmund Hutchinson  
 District Assessor, Bureau County  
 Transfer not necessary  
 J. C. White, County Auditor  
 Entered by record at 10:10 am April 10, 1915  
 Recorder  
 By Roy Sander's Deputy  
 Attest: J. J. Spry, Recorder  
 By Roy Sander's Deputy