

NORTH EIGHTH ST.
785.1'
N00°14'W

PLAT OF

THE CITY PARK CAMBRIDGE, OHIO

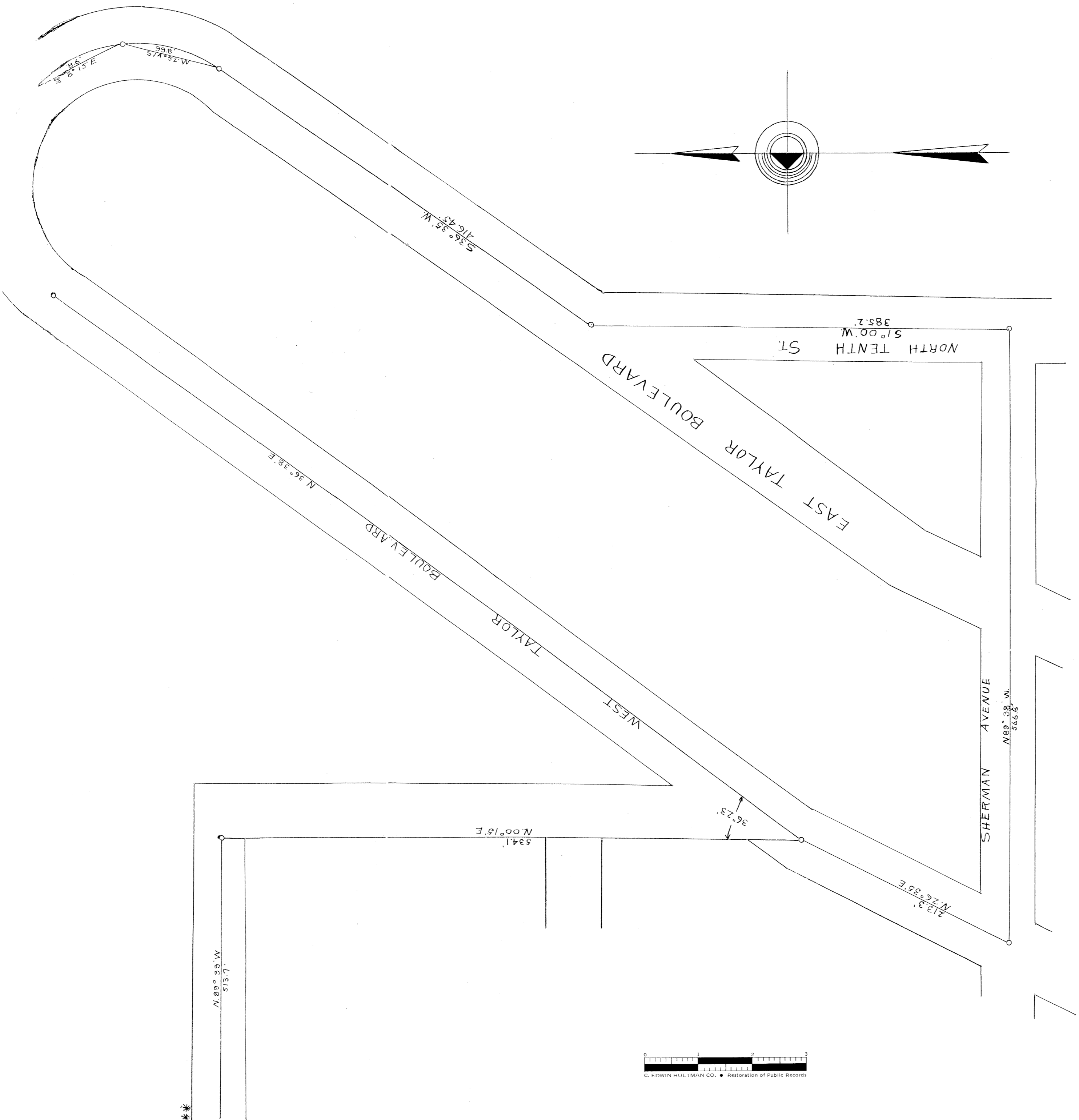
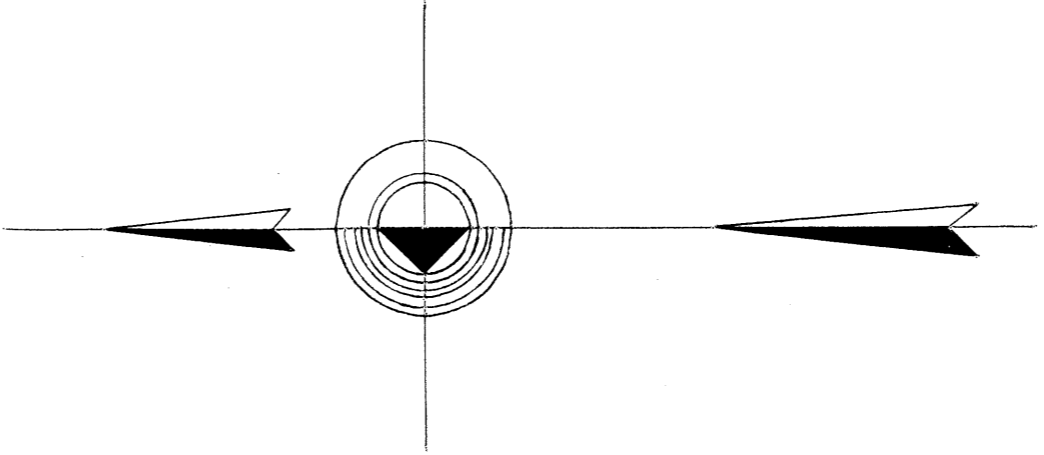
DEPARTMENT OF PUBLIC SERVICE

J H DILLEY MAYOR

J A LEYSHON DIRECTOR OF PUBLIC SERVICE

KARL M GOSSTROVE CITY ENG

SCALE 1"=50'
1913



0 1 2 3
C. EDWIN HULTMAN CO. • Restoration of Public Records