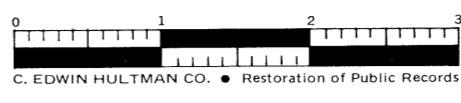
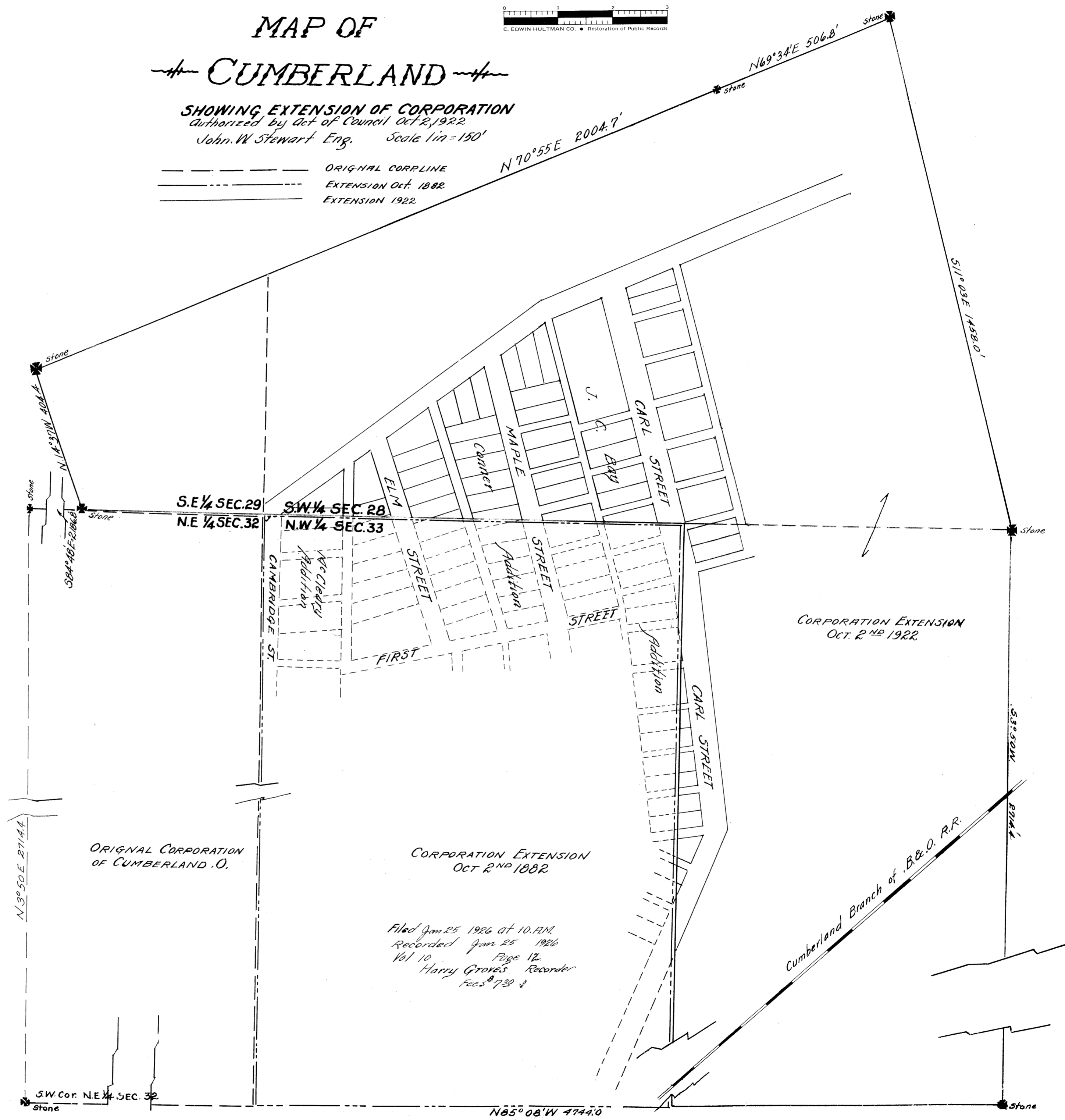


MAP OF CUMBERLAND



SHOWING EXTENSION OF CORPORATION
Authorized by Act of Council Oct 2, 1922
John W Stewart Eng. Scale 1 in = 150'

----- ORIGINAL CORP LINE
- - - - - EXTENSION OCT. 1882
===== EXTENSION 1922



CORPORATION EXTENSION
OCT. 2ND 1922

ORIGINAL CORPORATION
OF CUMBERLAND, O.

CORPORATION EXTENSION
OCT 2ND 1882

Filed Jan 25 1926 at 10 A.M.
Recorded Jan 25 1926
Vol 10 Page 12
Harry Groves Recorder
Recs 732

SW. Cor. N.E. 1/4 SEC. 32
Stone

N 85° 08' W 4744.0'

Stone
535.50 W
B.M. 4

Cumberland Branch of B.&O. R.R.

Stone

Stone

Stone

Stone

Stone

N 3° 50' E 2714.4'

N 14° 37' W 404.4'

S 84° 40' E 2166.8'

N 70° 55' E 2004.7'

N 69° 34' E 506.8'

S 11° 03' E 1458.0'