

H.H. BLACK SUBDIVISION TO CAMBRIDGE OHIO

Sold at Auction May 28, 25

Scale 1" = 200'

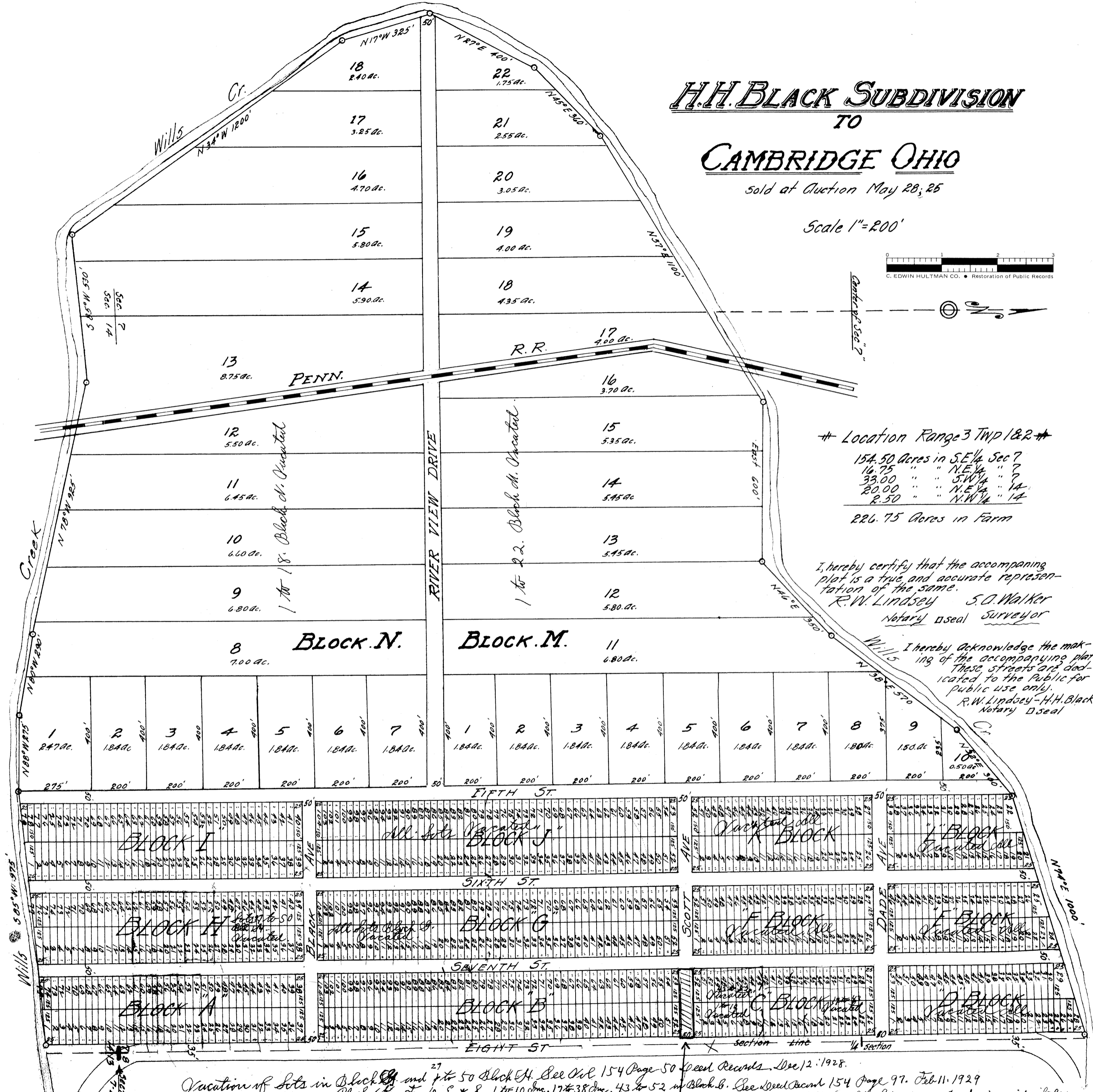
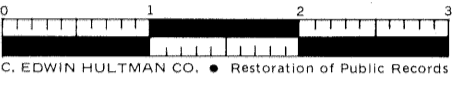


Table listing acreage breakdown by quarter section: 154.50 Acres in S.E. 1/4 Sec 7, 14.75 in N.E. 1/4, 33.00 in S.W. 1/4, 20.00 in N.E. 1/4, 2.50 in N.W. 1/4. Total: 226.75 Acres in Farm.

I hereby certify that the accompanying plat is a true and accurate representation of the same. R.W. Lindsey S.D. Walker Notary Oseal Surveyor

I hereby acknowledge the making of the accompanying plat. These streets are dedicated to the public for public use only. R.W. Lindsey-H.H. Black Notary Oseal

Handwritten notes at the bottom regarding 'Vacation of lots in Block A and 4 to 50 Block H. See Vol 154 Page 50 Deed Records... Dec 12, 1928.' and 'See Deed Record 154, Page 242. Also all Alley & St separating & bordering said lots...'