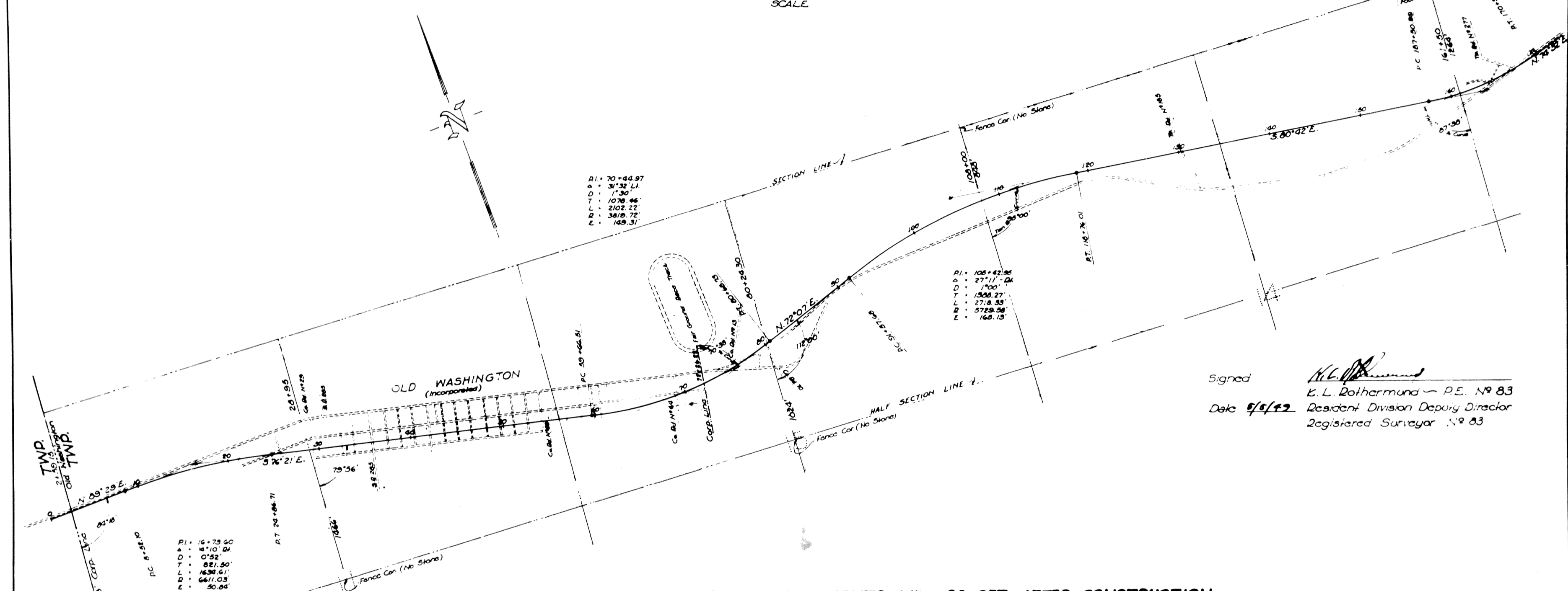
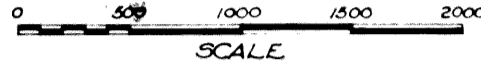


LOCATION PLAN

GUE-40(15.68-16.92)

GUERNSEY COUNTY

Received - May 31-1949 at 2:40 P.M.
 Recorded - May 31-1949
 Plat Book No. 10 Page 4
 Signed - [Signature] Deodor Guernsey County, Ohio.
 Fee \$2.00



Signed [Signature]
 E. L. Rothermund - P.E. No. 83
 Date 5/8/49 Resident Division Deputy Director
 Registered Surveyor No. 83

CENTER LINE REFERENCE MONUMENTS WILL BE SET AFTER CONSTRUCTION

	 STA. 2+89.15	 STA. 5+02.10	 RC. STA. 8+82.10	 STA. 20+00	 STA. 33+50	 STA. 50+00	 STA. 68+70	 RC. STA. 91+57.68	 STA. 108+00	 STA. 127+50	 STA. 182+00	 RT. STA. 170+82.03
	 STA. 13+60	 RT. STA. 24+86.71	 STA. 40+00	 RC. STA. 59+66.57	 RT. STA. 80+68.73	 STA. 100+00	 RT. STA. 118+76.01	 STA. 139+00	 RC. STA. 157+50.99			

I HEREBY CERTIFY THIS IS A TRUE PHOTO-COPY
 OF LOCATION PLAN REDUCED ONE HALF IN SIZE
 FROM ORIGINAL. AS PRESENTED FOR RECORD BY
 THE STATE HIGHWAY DEPT. MAY 31-1949.

ATTEST - HARRY W. WENGER
 RECORDER

