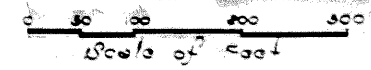


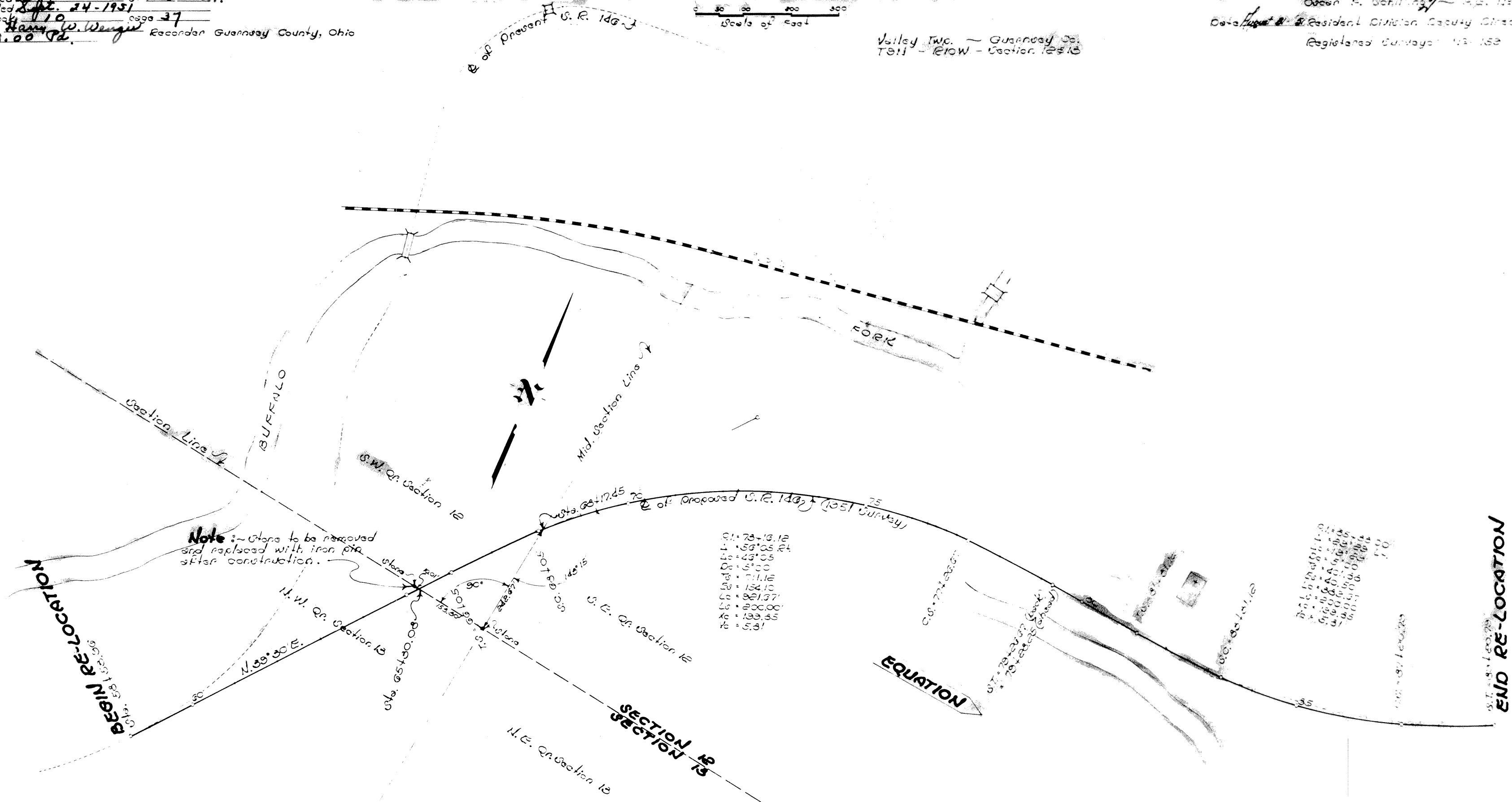
LOCATION PLAN GUE 146-7.31 - GUERNSEY COUNTY

Received Sept. 24-1951 at 1:20 P.M.
Recorded Sept. 24-1951
Cost Book 170 Page 37
Original Harry W. Wenger Recorder Guernsey County, Ohio
Fee 3.00

Signed Osborn R. Schilling Reg. No. 152
Date Sept 24 Resident Division, Secy. Office
Registered Surveyor No. 152



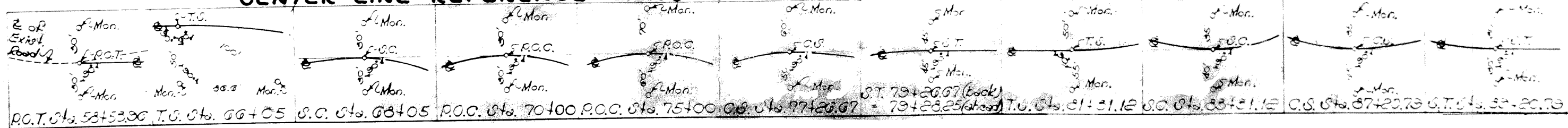
Valley Twp. - Guernsey Co.
T811 - 120W - Section 12&13



- 51.78-13.12
- 52.14-13.05
- 53.13-13.00
- 54.11-11.16
- 55.15-13.10
- 56.13-13.07
- 57.13-13.00
- 58.13-13.05
- 59.13-13.05

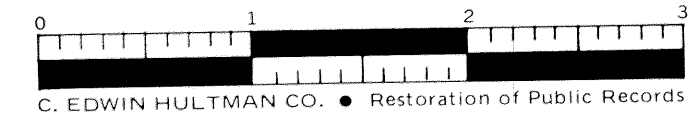
- 60.13-13.05
- 61.13-13.05
- 62.13-13.05
- 63.13-13.05
- 64.13-13.05
- 65.13-13.05
- 66.13-13.05
- 67.13-13.05
- 68.13-13.05
- 69.13-13.05

CENTER LINE REFERENCE MONUMENTS WILL BE SET AFTER CONSTRUCTION



I HEREBY CERTIFY THIS IS A TRUE PHOTO-COPY
OF LOCATION PLAN REDUCED ONE HALF IN SIZE
FROM ORIGINAL. AS PRESENTED FOR RECORD BY
THE STATE HIGHWAY DEPT. SEPT. 24-1951.

ATTEST - HARRY W. WENGER
RECORDER



C. EDWIN HULTMAN CO. • Restoration of Public Records