

LOCATION PLAN

GUE.~21~5.90~GUERNSEY COUNTY

CAMBRIDGE~CALDWELL ROAD

1
2

Received 10/7/55 Time 1:15 PM
Recorded October 7, 1955
Plat Book 10 Page 48
Signed Harry W. Wenger Recorder, Guernsey Co, Ohio
Rec'd 10/7/55 By: Oliver Beal
Deputy

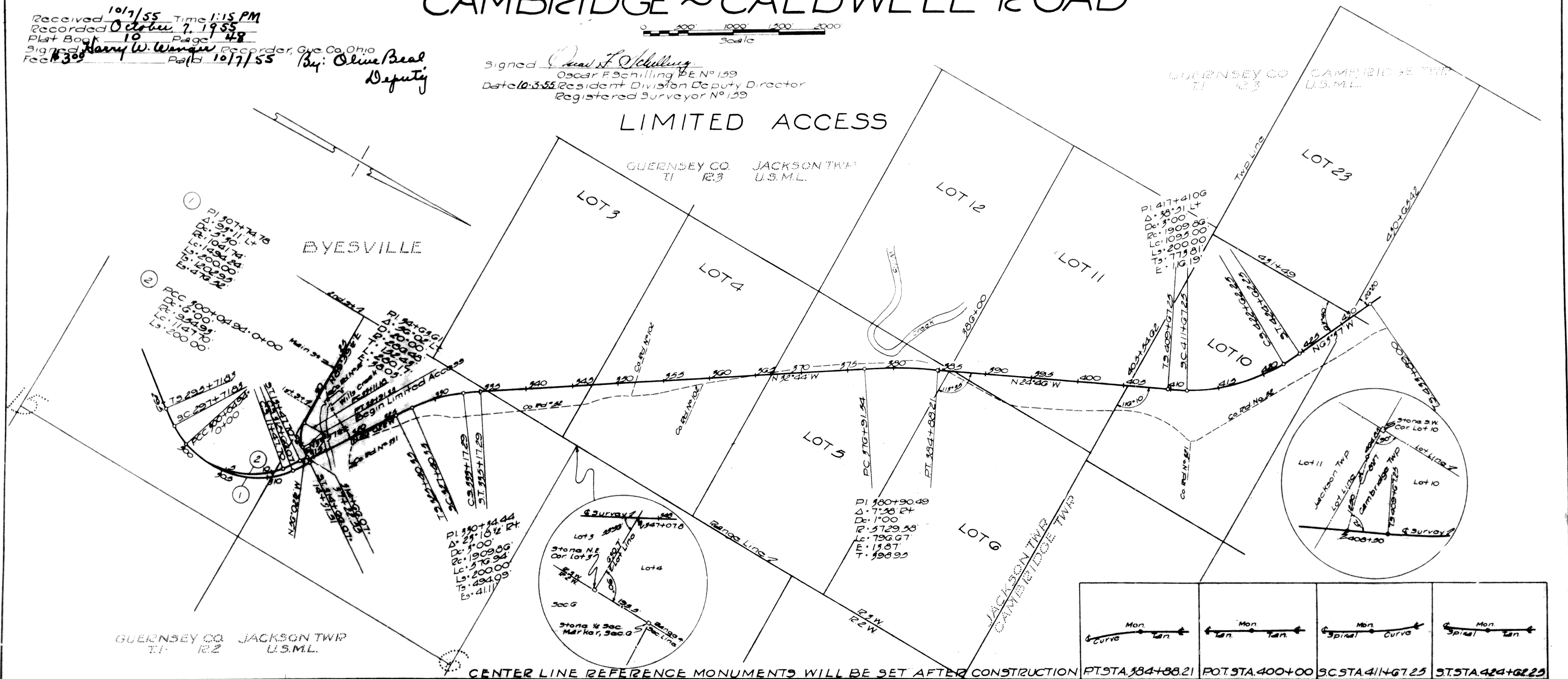
Signed Oscar F. Schilling
Oscar F. Schilling, P.E. No. 139
Date 10.3.55 Resident Division Deputy Director
Registered Surveyor No. 139

Scale
0 400 800 1200 1600 2000

LIMITED ACCESS

GUERNSEY CO. JACKSON TWP. U.S.M.L.
T1 R23

GUERNSEY CO. CAMBRIDGE TWP. U.S.M.L.
T1 R23



CENTER LINE REFERENCE MONUMENTS WILL BE SET AFTER CONSTRUCTION

POT. STA 30+00	PT. STA 32+91.25	POT. STA 324+00	SC. STA 327+40.35	ST. STA 335+17.29	POT. STA 345+00	POT. STA 355+00	POT. STA 365+00	PC. STA 376+91.54	POT. STA 390+00	POT. STA 405+00	POC. STA 417+00	POT. STA 430+00	TS. STA 435+03.00

0 1 2 3
C. EDWIN HULTMAN CO. • Restoration of Public Records