

RESTRICTIONS RUNNING WITH SAID SURETY BOND

1. All residences shall be of not less than 1100 square feet of living area, exclusive of porches.
2. All lots shall be used exclusively for residential purposes which may include either a single or double dwelling house.
3. No building shall be built closer than 25 feet to any front lot line or 10 feet to any side lot line.
4. No building shall be erected of cement block or similar material for more than 3 feet above ground level excepting porches which when constructed of said cement block or similar material must be located at the rear of said lots.
5. All septic tanks and sewer systems must comply with the standards as prescribed by the Guernsey County Board of Health.

Submitted for acceptance and approval.

Clerk, County Commissioners *January 16, 1961.*  
*Edna R. Kornmell*

Accepted and approved  
Guernsey County Commissioners  
*January 16, 1961.*  
*William Steyer*

*Ray Feltich*

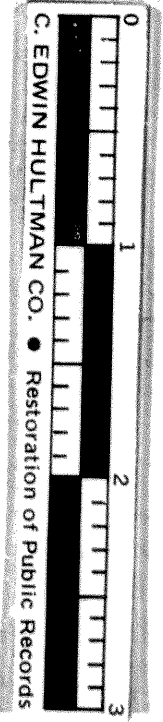
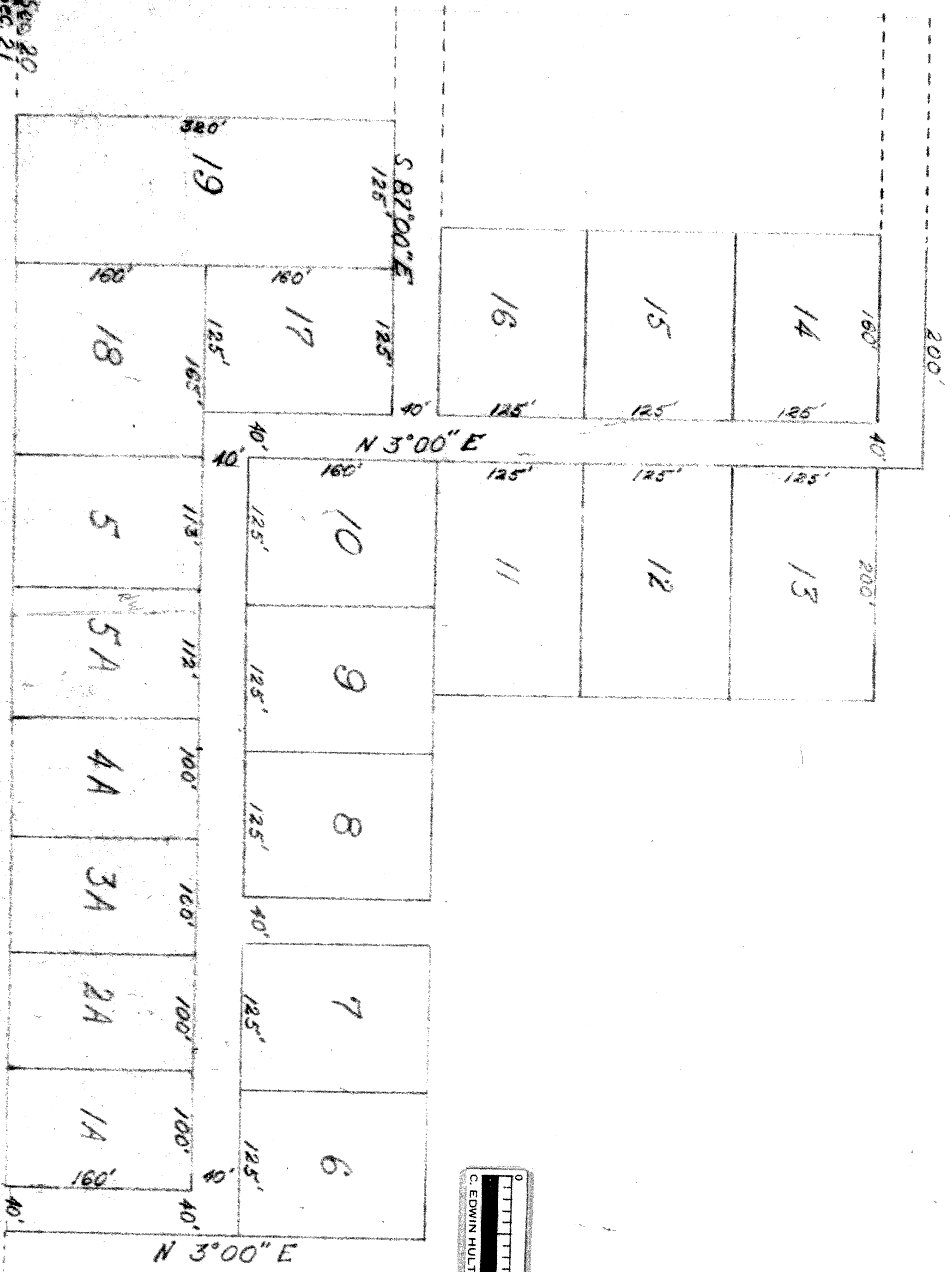
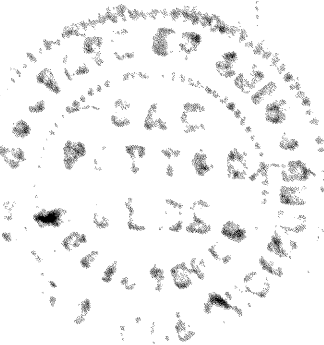
Transferred *January 17, 1961.* Fee *3.50*

Auditor - Guernsey County  
*3420*  
*Edna R. Kornmell*  
*Ray Feltich*

State of Ohio, Guernsey County  
Received for record on the *17* day of *January* 1961  
at *11* o'clock *a* m.  
In Plat book *11* page *3031*, fee paid *3.00*

Guernsey County Recorder *John W. Campbell*

*John W. Campbell*  
Engineer  
# *8122*



ADAMS TWP.  
CAMBRIDGE TWP.

Scale 1" = 100'