

REG. NO.	STATE	PROJECT
2	OHIO	

GUERNSEY COUNTY
GUE-40-10.52
LOCATION PLAN

Received
Recorded
Plat Book
Signed
Recorder Guernsey County

Note: This instrument prepared by the Ohio Department of Highways under the supervision of
Signed *Nancy P. Blannin, W.S.H.*

Registered Engineer NE 5394
Registered Surveyor NE 2994
Resident Division Deputy Director
Date: 4-17-62

This improvement has been declared a Limited Access Highway from Station 279+00.00 to Station 350+00.00 by action of the Director of Highways and recorded in Volume 44, Page 253 of the Director's Journal Pursuant to law.

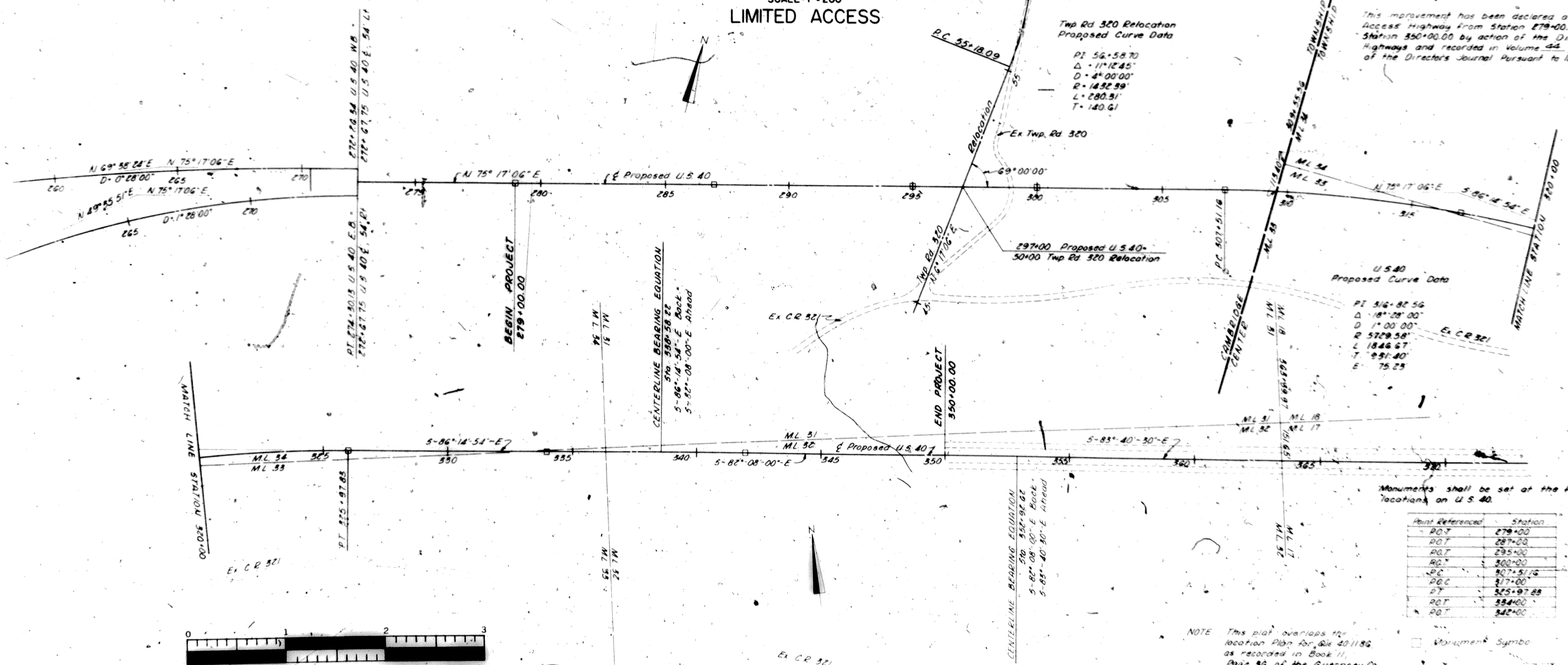
LOCATION PLAN

GUE-40-10.52

CAMBRIDGE & CENTER TWP'S

U.S.M.L. N^os. 31, 32, 33, 34 & 4TH 1/4 T.2, R.2 & R.3, U.S.M.L. GUERNSEY COUNTY

0 200 400 600 800
SCALE: 1"=200'
LIMITED ACCESS



0 1 2 3
C. EDWIN HOLTMAN CO. ● Restoration of Public Records

Monuments shall be set at the following locations on U.S. 40.

Point Referenced	Station
P.O.T.	279+00
P.O.T.	287+00
P.O.T.	295+00
P.O.T.	300+00
P.C.	307+51.76
P.O.C.	317+00
P.T.	325+07.88
P.O.T.	334+00
P.O.T.	342+00

NOTE: This plat overlaps the location plan for file 40-1186 as recorded in Book 11, Page 36 of the Guernsey Co. Plat Records between Station 338+58.22 and Station 370+00.00

SCALE: 1"=200'