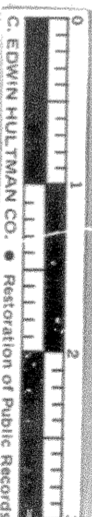
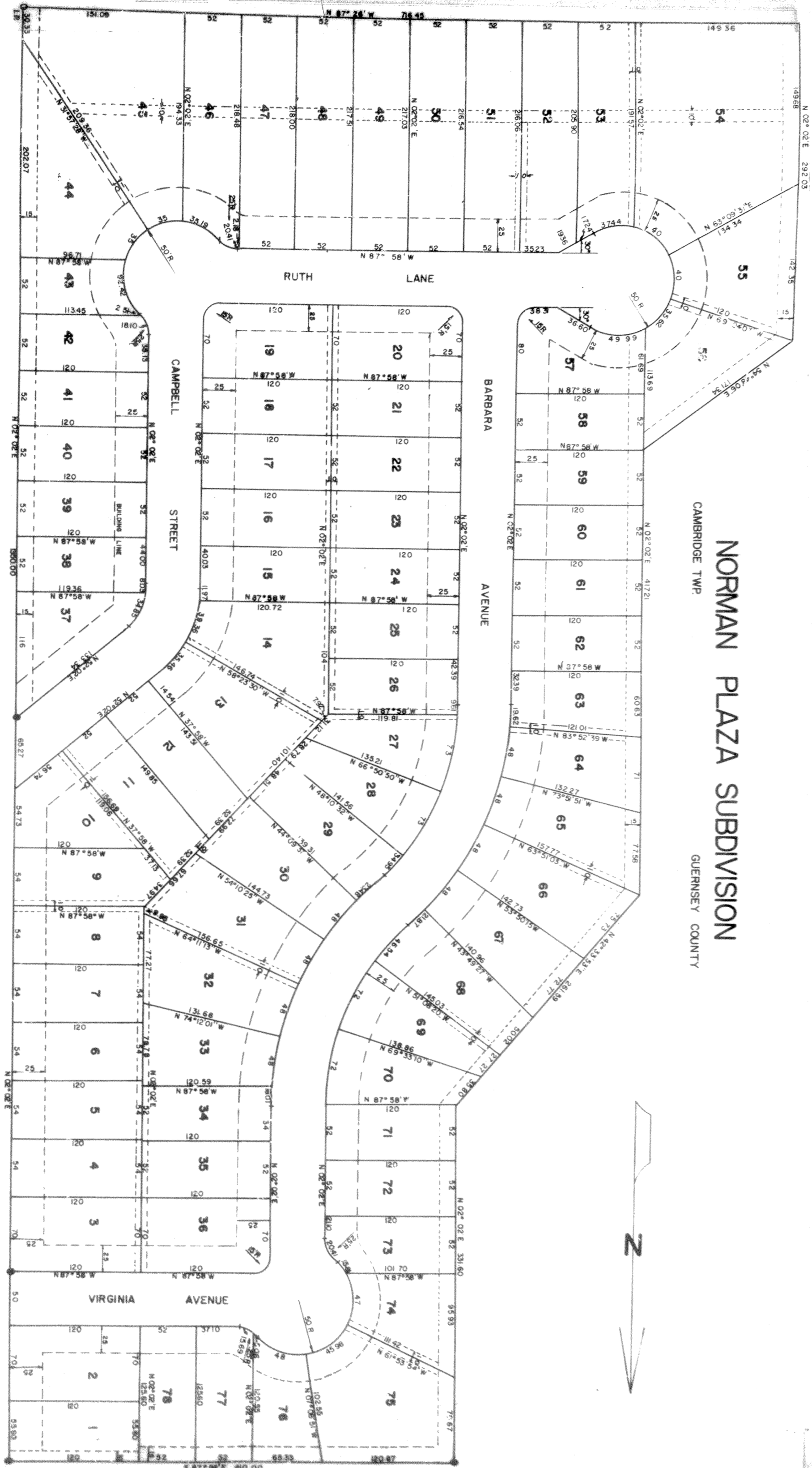


NORMAN PLAZA SUBDIVISION
CAMBRIDGE TWP. GUERNSEY COUNTY



The County Engineer of Guernsey County hereby approves this layout of Norman Plaza Subdivision this 27th day of June, 1962

Sam Patten
Guernsey County Engineer

I hereby certify that this plat correctly represents the lands as surveyed laid out and platted by me for Norman Plaza Inc.

Richard E. Kohn
Reg. Surveyor No. 4626

NOTE

Dimensions shown on curved lines are chord distances from pins are indicated o monuments @

CURVE DATA

Campbell St	A = 50°	Barbara Ave	A = 48°42'
	R = 75'		D = 22°55'06"
	D = 75°23'40"		R = 250'
	T = 34.97'		T = 113.14'
	L = 65.45'		L = 212.49'

Norman Plaza Inc. an Ohio Corporation, by its officer duly authorized herein, has caused the within delineated lands to be surveyed, laid out and platted as herein shown, and said Corporation, as the owner hereof, does hereby dedicate to public use forever the streets, as designated and shown on said plat.

In Witness Whereof Norman Plaza Inc. by Orville H. Turner, its President, has hereunto set his hand this 27th day of June, 1962

Orville H. Turner
Orville H. Turner

State of Ohio
Licking County, ss

Before me, a Notary Public in and for the State of Ohio, personally appeared Orville H. Turner, President of Norman Plaza Inc., the corporation which executed the foregoing dedication, who acknowledged that he did sign said instrument as such President in behalf of said corporation and by authority of its Board of Directors, and that said instrument is his free act and deed individually and as such President and the free and corporate act and deed of said Norman Plaza Inc.

In Testimony Whereof, I have hereunto subscribed my name and affixed my official seal or Newark, Ohio this 27th day of June, 1962

Frank A. Robison
Frank A. Robison, Notary Public
in and for the State of Ohio

The County Commissioners of Guernsey County hereby approve and accept the streets as delineated on this plat of Norman Plaza Subdivision this 27th day of June, 1962 and signed by the Chairman this 27th day of June, 1962

Richard Reed
Chairman

AUDITOR
The land herein platted has been transferred this 27th day of June, 1962

Total acreage 17.336
Auditing fee 4.25

Guernsey County Auditor
Guernsey County Auditor

RECORDED
Tl. plat of Norman Plaza Subdivision was recorded this 27th day of June, 1962
in Plat Book Volume LL page 42 and _____ with restrictions attached
Plat Fee 3.00 Restrictions Fee 2.38 Total Recording Fee 5.38

THIS INSTRUMENT PREPARED BY WARD ENGINEERS, NEWARK, OHIO

See memo 7/25 page 4 & 7 for instructions