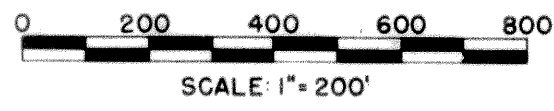


CENTER LINE SURVEY PLAT

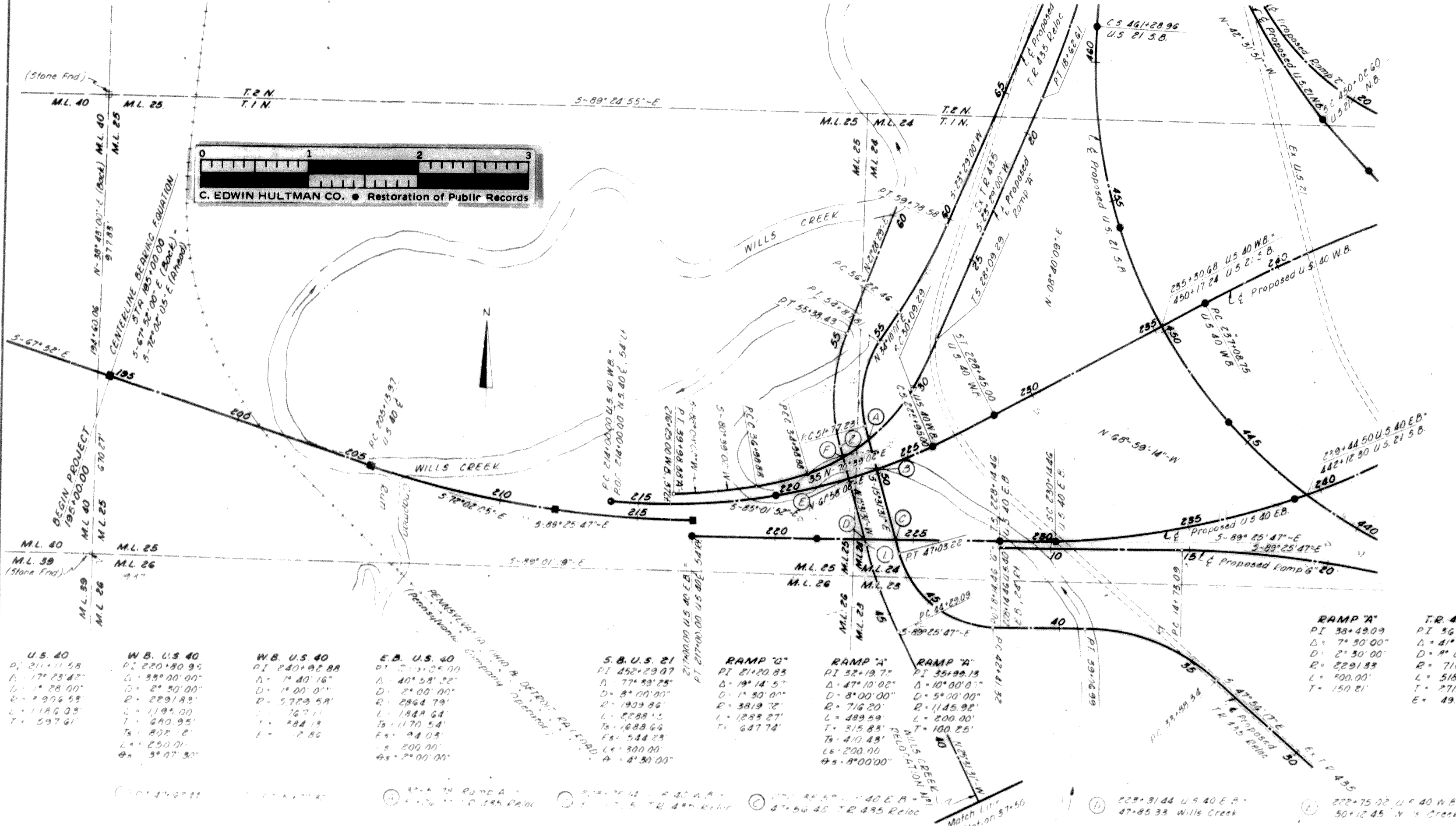
GUE 40-8.93

JACKSON & CAMBRIDGE TWP'S

U.S.M.L. N^os 9,10,11,23,24,25,26 & 4TH 1/4 T.1 & T.2, R.3 U.S.M.L. GUERNSEY COUNTY



LIMITED ACCESS



0 1 2 3
C. EDWIN HULTMAN CO. • Restoration of Public Records

Received July 12, 1962, 11:15 AM
Recorded July 13, 1962
Plat Book Page 46
Signed John W. Campbell
Recorder Guernsey County
Fe. 83 pd

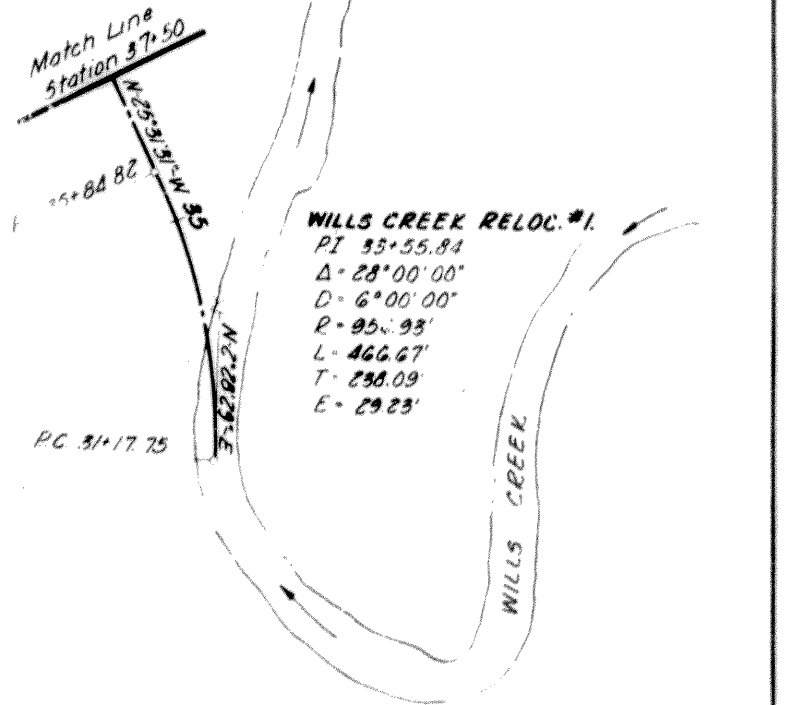
Note:
This instrument prepared by the Ohio Department of Highways under the supervision of
Signed _____

Registered Engineer No. 5394
Registered Surveyor No. 2694
Resident Division Deputy Director
Date: _____

This improvement has been declared a Limited Access Highway from Station 195+00 to Station 279+00 by action of the Director of Highways and recorded in Volume 44, Page 263, of the Directors Journal Pursuant to law

Note:
This plat includes and supersedes parts of sheets and 2 of the Location Plan for GUE-21-5.90 as recorded in Plat Book 10, Page 48 of the Guernsey County Plat Records.

WILLS CREEK RELOC. #1	WILLS CREEK RELOC. #1
PI 45+96.18	PI 53+40.35
Δ = 10°00'00"	Δ = 37°00'00"
D = 3°00'00"	D = 9°00'00"
R = 1909.86'	R = 636.62'
L = 333.33'	L = 411.11'
T = 167.09'	T = 213.01'



U.S. 40	W.B. U.S. 40	W.B. U.S. 40	E.B. U.S. 40	S.B. U.S. 21	RAMP 'G'	RAMP 'A'	RAMP 'A'	RAMP 'A'	RAMP 'A'	RAMP 'A'	T.R. 435 Reloc.	T.R. 435 Reloc.	T.R. 435 Reloc.	T.R. 435 Reloc.	T.R. 435 Reloc.
PI 211+11.58	PI 270+80.95	PI 240+92.88	PI 53+05.10	PI 452+29.07	PI 21+20.83	PI 32+19.77	PI 35+99.13	PI 38+49.09	PI 36+59.62	PI 45+10.70	PI 53+43.05	PI 53+43.05	PI 53+43.05	PI 53+43.05	PI 53+43.05
Δ = 17°23'42"	Δ = 83°00'00"	Δ = 74°40'16"	Δ = 40°58'32"	Δ = 77°39'25"	Δ = 19°14'57"	Δ = 47°10'02"	Δ = 5°00'00"	Δ = 7°30'00"	Δ = 4°59'30"	Δ = 73°54'16"	Δ = 49°41'32"	Δ = 49°41'32"	Δ = 49°41'32"	Δ = 49°41'32"	Δ = 49°41'32"
D = 2°28'00"	D = 2°20'00"	D = 14°00'00"	D = 2°00'00"	D = 8°00'00"	D = 1°30'00"	D = 8°00'00"	D = 5°00'00"	D = 2°30'00"	D = 9°00'00"	D = 16°00'00"	D = 16°00'00"	D = 16°00'00"	D = 16°00'00"	D = 16°00'00"	D = 16°00'00"
R = 1904.68'	R = 2291.83'	R = 2291.83'	R = 2864.78'	R = 1909.86'	R = 3819.72'	R = 716.20'	R = 1145.92'	R = 2291.83'	R = 716.20'	R = 716.20'	R = 358.10'	R = 358.10'	R = 358.10'	R = 358.10'	R = 358.10'
L = 1166.03'	L = 1195.00'	L = 640.95'	L = 167.11'	L = 2288.15'	L = 1289.27'	L = 489.59'	L = 200.00'	L = 200.00'	L = 200.00'	L = 518.05'	L = 461.90'	L = 461.90'	L = 461.90'	L = 461.90'	L = 461.90'
T = 597.61'	T = 802.28'	T = 250.00'	T = 94.05'	T = 1688.66'	T = 1289.27'	T = 315.83'	T = 410.43'	T = 150.00'	T = 49.66'	T = 271.78'	T = 289.39'	T = 289.39'	T = 289.39'	T = 289.39'	T = 289.39'
Δ = 5°07'30"			Δ = 2°00'00"	Δ = 4°30'00"						E = 49.66'	E = 90.01'	E = 90.01'	E = 90.01'	E = 90.01'	E = 90.01'

■ Monument Symbol
● Monument Assembly Symbol

① 229+31.44 U.S. 40 E.B. 47+85.33 Wills Creek
② 222+75.02 U.S. 40 W.B. 50+12.45 N. 1/4 Creek
③ 33+57.87 Prop. L. 50+91.65 Wills Creek