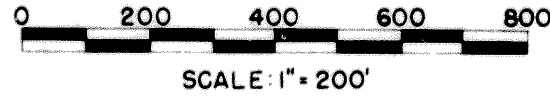


# CENTER LINE SURVEY PLAT

GUE 40-8.93

JACKSON & CAMBRIDGE TWP'S  
 U.S.M.L. N<sup>o</sup>'s 9,10,11,23,24,25,26 & 4<sup>TH</sup> 1/4 T.1 & T.2, R.3 U.S.M.L.  
 GUERNSEY COUNTY



LIMITED ACCESS

48

FED. RD. DIVISION	STATE	PROJECT	5
2	OHIO		4

GUERNSEY COUNTY  
 GUE-40-8.93  
 RIW 29

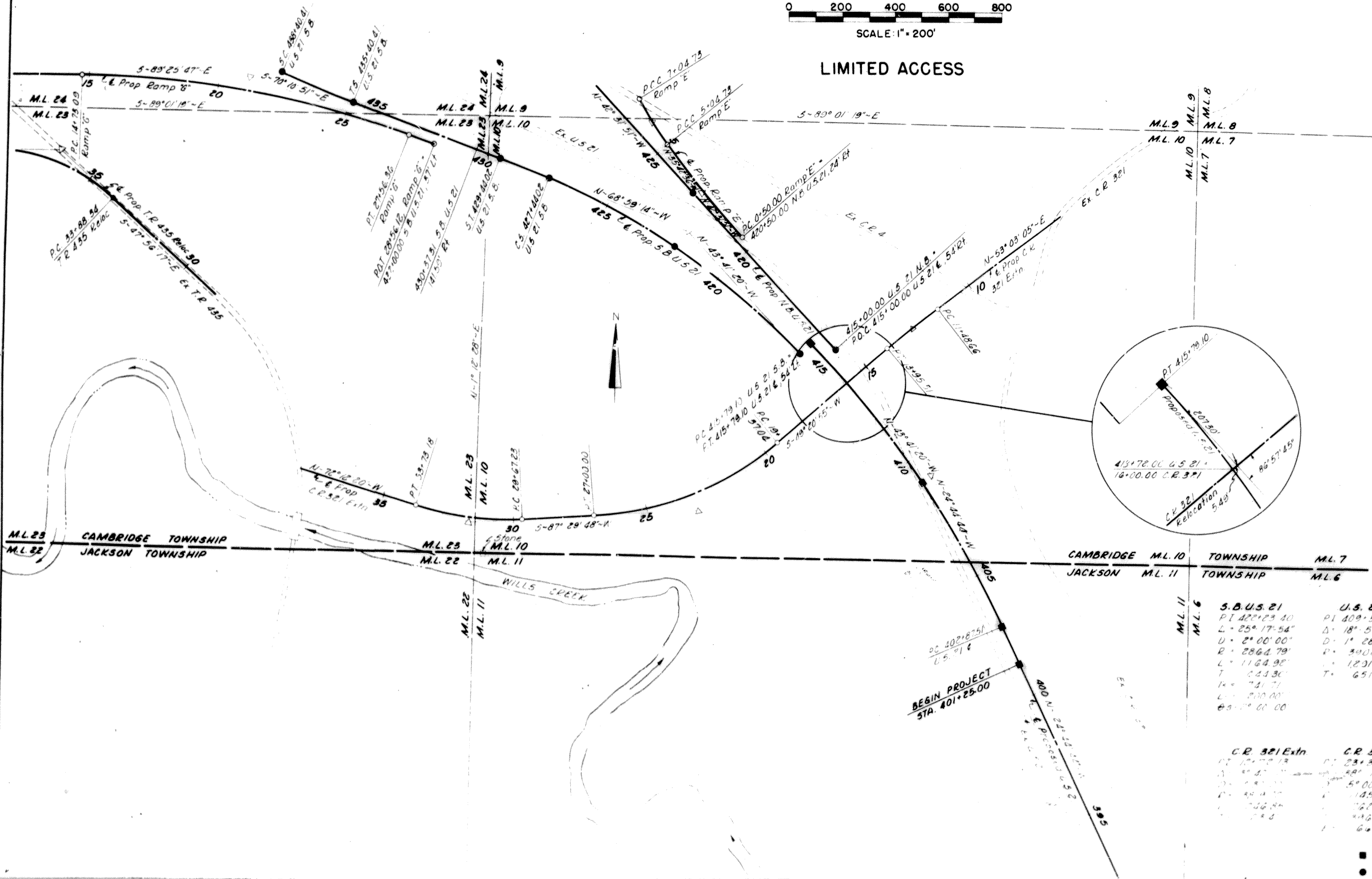
Received July 12 - 1962 at 11:25 AM  
 Recorded July 13 - 1962  
 Plat Book 11 Page 48  
 Signed John W. Campbell  
 Recorder, Guernsey County  
 Fee \$3.00 pd

Note  
 This instrument prepared by the Ohio Department of Highways under the supervision of  
 Signed \_\_\_\_\_

Registered Engineer No. 15384  
 Registered Surveyor No. 2604  
 Resident Division Deputy Director  
 Date \_\_\_\_\_

This improvement has been declared a Limited Access Highway from Station 195+00 to Station 270+00 by action of the Director of Highways and recorded in Volume 44, Page 263 of the Directors Journal Pursuant to law

Note  
 This plat includes and superseeds parts of sheets 1 and 2 of the Location Plan for GUE-21-5.90 as recorded in Plat Book 10, Page 88 of the Guernsey County Plat Records



	S.B.U.S. 21	U.S. 21 E	RAMP 'G'	RAMP 'E'	RAMP 'E'
PI	402+23.40	PI 409+39.25	PI 2+20.83	PI 2+17.63	PI 6+04.89
L	25° 17' 54"	Δ 18° 56' 36"	Δ 19° 14' 57"	Δ 6° 29' 15"	Δ 8° 00' 00"
U	2° 00' 00"	D 1° 28' 00"	D 1° 30' 00"	D 1° 30' 00"	D 4° 00' 00"
R	2864.79'	R 3904.53'	R 3819.72'	R 3819.72'	R 1432.30'
L	1164.95'	L 1201.59'	L 1283.27'	L 4' 4.73'	L 300.00'
T	644.36'	T 651.74'	T 647.74'	T 227.65'	T 100.16'
IC	741.21'				
L	210.00'				
θ	2° 00' 00"				

	C.R. 321 Extn	C.R. 321 Extn	C.R. 321 Extn	T.R. 435 Reloc.
PI	402+23.40	PI 23+23.27	PI 2+17.63	PI 34+59.60
L	25° 17' 54"	Δ 18° 56' 36"	Δ 6° 29' 15"	Δ 4° 29' 30"
U	2° 00' 00"	D 1° 28' 00"	D 1° 30' 00"	D 8° 00' 00"
R	2864.79'	R 500.00'	R 3819.72'	R 716.20'
L	1164.95'	L 145.00'	L 4' 4.73'	L 5' 9.59'
T	644.36'	T 42.16'	T 647.74'	T 27.28'
IC	741.21'	IC 205.4'		IC 4' 6.22'
L	210.00'	L 205.4'		
θ	2° 00' 00"	θ 1° 19' 27"		