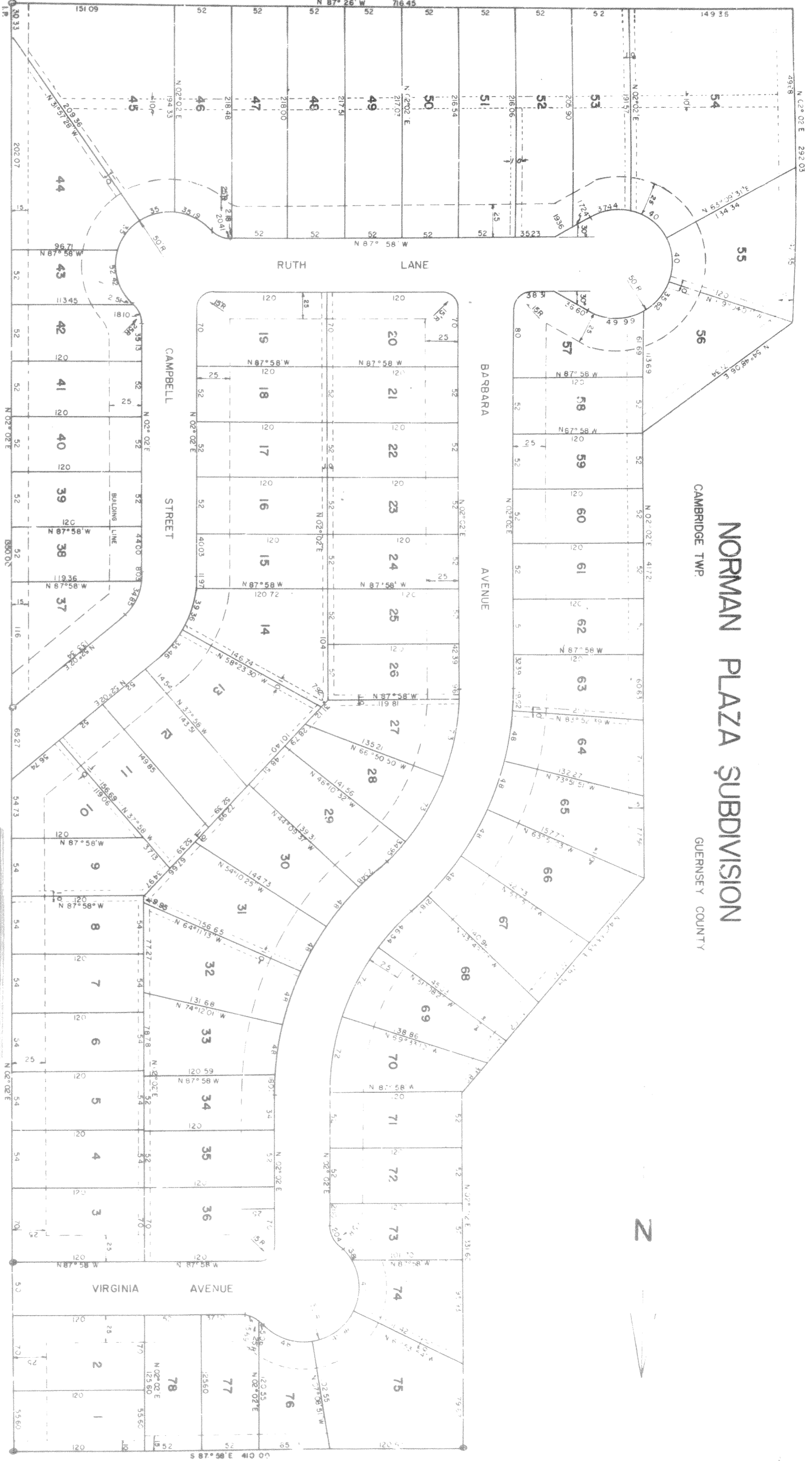


NORMAN PLAZA SUBDIVISION
CAMBRIDGE TWP. GUERNSEY COUNTY



V and L Construction Company, an Ohio Corporation, by its officer duly authorized herein, and Norman Plaza Inc. an Ohio Corporation, by its officer duly authorized herein, have caused the within delineated lands to be surveyed, laid out and plotted as herein shown, and said Corporations, as the owners thereof, does hereby dedicate to public use forever the streets as designated and shown on said plat having acquired title by deeds recorded in The Guernsey County Records in Vol 253, Pages 73 and 74 and Vol 253 Page 244

In witness whereof V and L Construction Co. by A. J. Vohlers its President and Norman Plaza Inc. by Orville H. Turner its President, has hereunto set their hands this 10 day of SEPT. 1962

State of Ohio
Licking County ss
Orville H. Turner
A. J. Vohlers

Before me a Notary Public in and for the State of Ohio, personally appeared A. J. Vohlers, President of The V and L Construction Company and Orville H. Turner, President of Norman Plaza Inc. the corporations which executed the foregoing dedication, who acknowledged that they did sign said instrument as such President in behalf of said corporations and by authority of their Boards of Directors, and that said instrument either free act and deed individually and as such Presidents and the free and corporate act and deed of said V and L Construction Co and Norman Plaza Inc.

In Testimony Whereof, I have hereunto subscribed my name and affixed my official seal at Newark, Ohio this 10 day of SEPT. 1962.

Me. S. Kohn
Norman S. Kohn Notary Public
In and for the State of Ohio

The County Engineer of Guernsey County hereby approves this layout of Norman Plaza Subdivision this 10 day of SEPT. 1962

Sam Patton
Guernsey County Engineer

The County Commissioners of Guernsey County hereby approves and accepts the streets as delineated on this plat of Norman Plaza Subdivision this 23 day of SEPT. 1962 and signed by the Chairman this 26 day of SEPT. 1962

Attest
Edward Reed
Chairman

AUDITOR

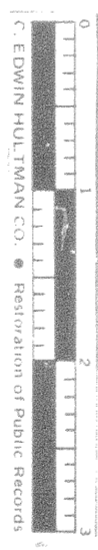
The land hereon plotted has been transferred this 26 day of SEPT. 1962
Total acreage 17.336
Auditing fee 3.99

Richard E. Kohn
Guernsey County Auditor

RECORDER

This plat of Norman Plaza Subdivision was recorded this 27 day of SEPT. 1962 in Plat Book Volume II, page 43 and with restrictions attached. Plat Fee 3.00. Restrictions Fee 2.35. Total Recording Fee 5.35.

See mid Vol 2 page 497 - RESTRICTIONS
Recorder - Sam Patton



This Instrument Prepared By Voro Engineers Newark, Ohio

I hereby certify that this plat correctly represents the lands as surveyed laid out and plotted by me for Norman Plaza Inc.

Richard E. Kohn Reg. Surveyor No. 4626

NOTE:

Dimensions shown on curved lines are chord distances
Iron pins are indicated by o monuments by @

CURVE DATA

Curve	Delta	Radius	Chord	Delta	Radius	Chord
Campbell St	50°	75'	76.2340'	49°42'	22°53'06"	250'
Barbara Ave	50°	75'	76.2340'	49°42'	22°53'06"	250'

SCALE 1" = 40'

9084

This plat of Norman Plaza Subdivision was recorded this 27 day of SEPT. 1962 in Plat Book Volume II, page 43, with restriction attached. Plat Fee 3.00. Restrictions Fee 2.35. Total Recording Fee 5.35.

Richard E. Kohn
Recorder