

CENTER LINE SURVEY PLAT

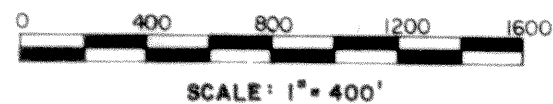
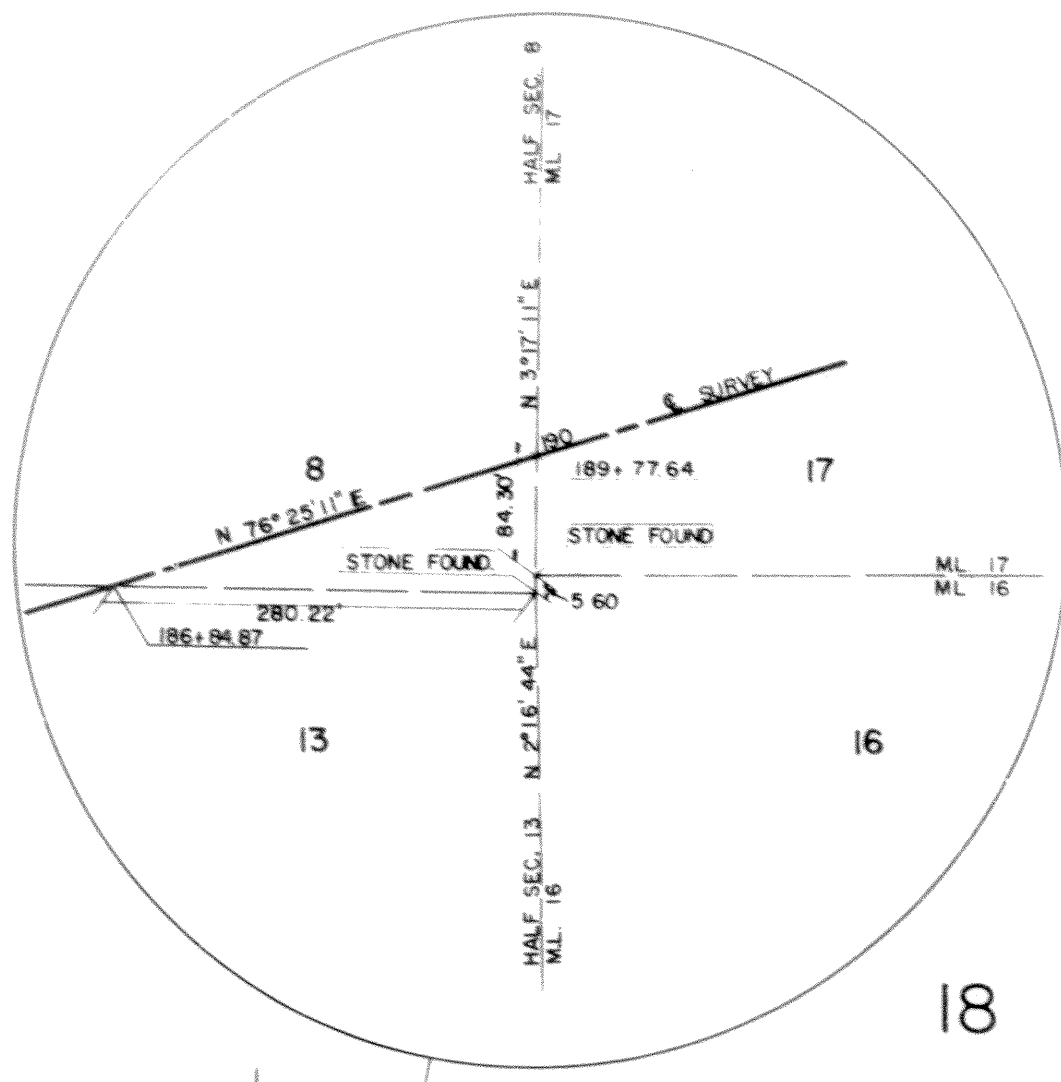
GUE-40-17.37

WILLS TWP.

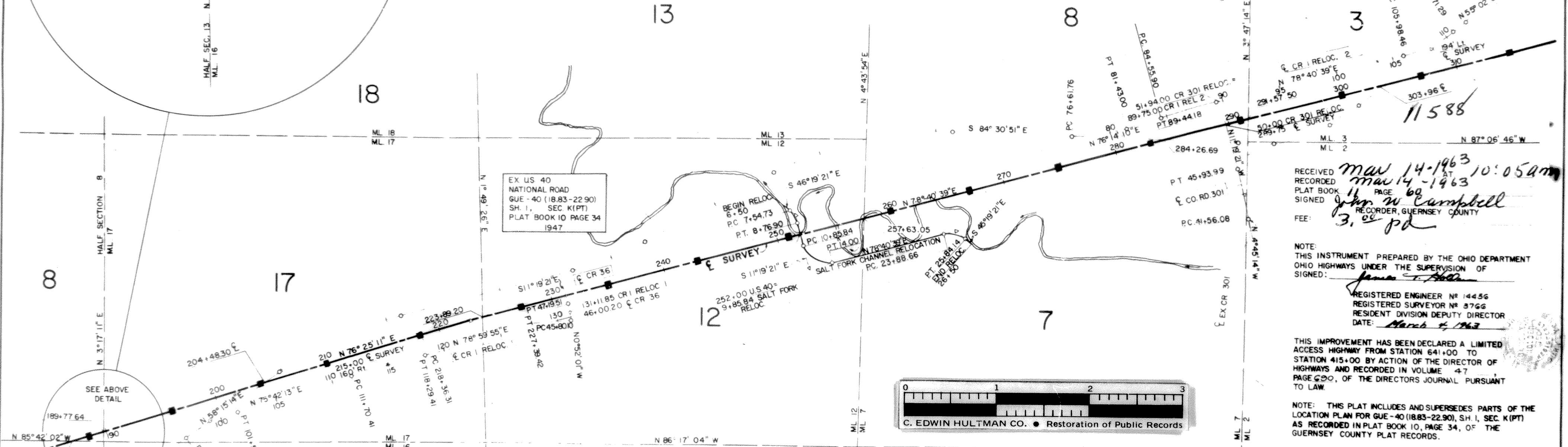
R. 1W, T. 2N, USML N^o'S 2,3,7,8,12,13,16,17, & SEC'S 8 & 13

GUERNSEY COUNTY

GUERNSEY COUNTY
GUE-40-17.37
LOCATION PLAN



LIMITED ACCESS



RECEIVED
RECORDED
PLAT BOOK PAGE
SIGNED *John W. Campbell*
RECORDER, GUERNSEY COUNTY
FEE: *3.00 pd*

NOTE:
THIS INSTRUMENT PREPARED BY THE OHIO DEPARTMENT
OHIO HIGHWAYS UNDER THE SUPERVISION OF
SIGNED: *James C. Miller*
REGISTERED ENGINEER N^o 14456
REGISTERED SURVEYOR N^o 8766
RESIDENT DIVISION DEPUTY DIRECTOR
DATE: *March 4, 1963*

THIS IMPROVEMENT HAS BEEN DECLARED A LIMITED
ACCESS HIGHWAY FROM STATION 641+00 TO
STATION 415+00 BY ACTION OF THE DIRECTOR OF
HIGHWAYS AND RECORDED IN VOLUME 47
PAGE 600, OF THE DIRECTORS JOURNAL PURSUANT
TO LAW.

NOTE: THIS PLAT INCLUDES AND SUPERSEDES PARTS OF THE
LOCATION PLAN FOR GUE-40 (1883-2290), SH. 1, SEC. K (PT)
AS RECORDED IN PLAT BOOK 10, PAGE 34, OF THE
GUERNSEY COUNTY PLAT RECORDS.

SALT FORK CHANNEL RELOCATION CURVE DATA		
PI = 8+17.79	PI = 12+85.84	PI = 24+95.0
Δ = 35° 00' 00"	Δ = 90° 00' 00"	Δ = 56° 00' 00"
D = 28° 38' 52"	D = 28° 38' 52"	D = 28° 38' 52"
L = 122.173'	L = 314.16'	L = 195.476'
T = 63.06'	T = 200'	T = 106.341'
R = 200'	R = 200'	R = 200'
E = 9.71'	E = 82.84'	E = 26.51'

SURVEY CURVE DATA	
PI = 222+87.92	
Δ = 2° 15' 28"	
Dc = 0° 15'	
R = 22918.31'	
L = 903.11'	
T = 451.61'	
E = 4.45'	

CO. RD. 1, RELOCATION #1, CURVE DATA	
PI = 99+04.26	PI = 15+00.00
Δ = 17° 26' 59"	Δ = 3° 17' 42"
Dc = 3° 30'	Dc = 0° 30'
R = 1637.02'	R = 11459.15'
L = 498.56'	L = 669.00'
T = 251.23'	T = 329.57'
E = 19.17'	E = 4.74'

CO. RD. 36 CURVE DATA	
PI = 4650.00	
Δ = 10° 27' 20"	
Dc = 7° 30'	
R = 763.94'	
L = 139.41'	
T = 69.90'	
E = 3.19'	

CO. RD. 301 CURVE DATA	
PI = 43+75.27	
Δ = 6° 34' 07"	
Dc = 1° 30'	
R = 3819.72'	
L = 437.91'	
T = 219.19'	
E = 6.27'	

CO. RD. 1, RELOCATION #2 CURVE DATA		
PI = 79+04.67	PI = 87+00.08	PI = 108+38.29
Δ = 19° 14' 59"	Δ = 2° 26' 29"	Δ = 23° 38' 30"
Dc = 4° 00'	Dc = 0° 30'	Dc = 5° 00'
R = 1432.39'	R = 11459.16'	R = 1145.92'
L = 481.24'	L = 488.28'	L = 472.83'
T = 242.91'	T = 244.18'	T = 239.83'
E = 20.45'	E = 2.60'	E = 24.83'

MONUMENTS SHALL BE SET AT THE FOLLOWING LOCATIONS ON THE SURVEY	
POT	188+50
POT	196+00
POT	204+00
POT	210+00
PC	218+36.31
PT	227+39.42
POT	235+00
POT	243+00
POT	251+00
POT	260+00
POT	267+00
POT	275+00
POT	283+00
POT	291+00
POT	300+00
POT	307+00
POT	315+00

MONUMENT SYMBOL
MONUMENT ASSEMBLY SYMBOL