

CENTER LINE SURVEY PLAT

GUE-40-17.37

WILLS TWP. R. 1W, T. 2N, USML NO'S. 2, 3, & 4

OXFORD TWP. R. 7W, T. 10N, SEC'S. 25, 26, 31 & 32

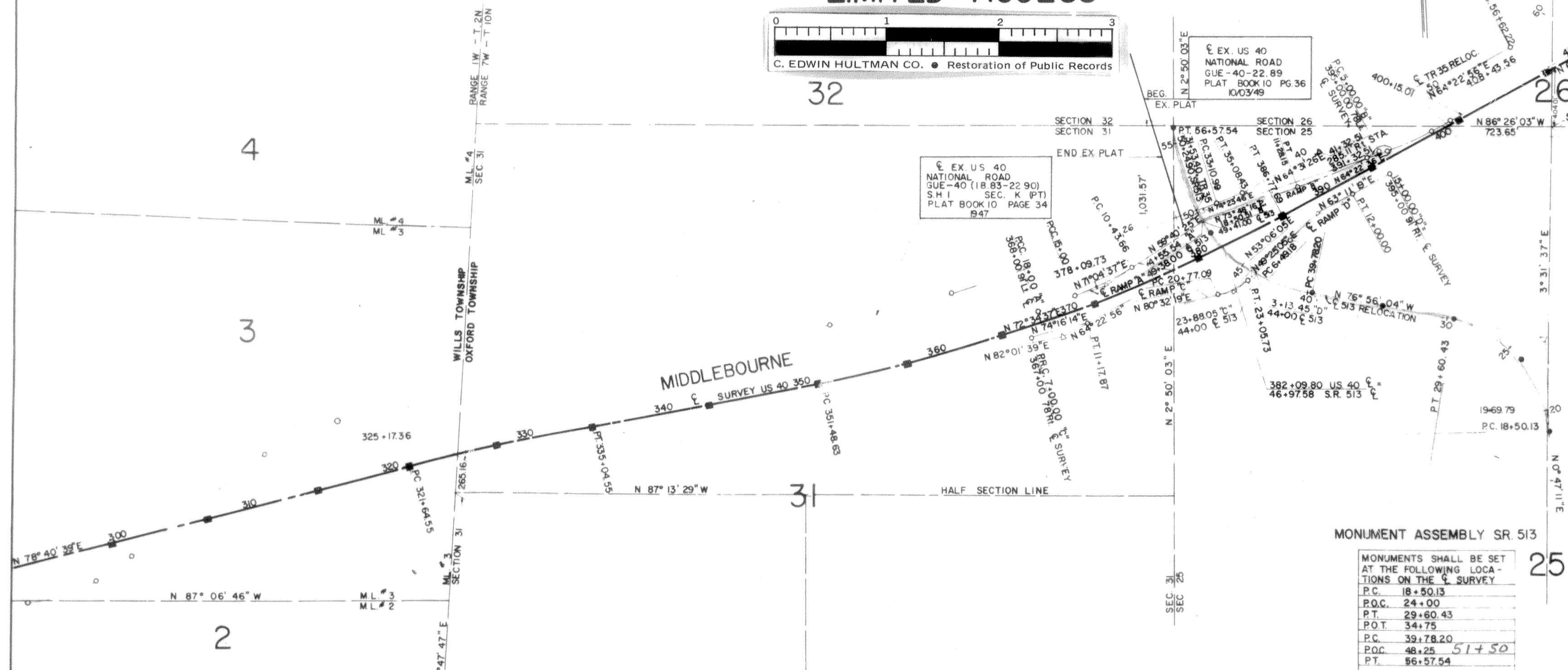
GUERNSEY COUNTY

0 400 800 1200 1600
SCALE: 1" = 400'

LIMITED ACCESS

C. EDWIN HULTMAN CO. • Restoration of Public Records

32



RECEIVED *May 14-1963* at 10:10am
 RECORDED *May 14-1963*
 PLAT BOOK PAGE
 SIGNED *John W. Campbell*
 RECORDER, GUERNSEY COUNTY

NOTE:
 THIS INSTRUMENT PREPARED BY THE OHIO DEPARTMENT
 OF HIGHWAYS UNDER THE SUPERVISION OF
 SIGNED: *James T. Fallon*
 REGISTERED ENGINEER N# 14456
 REGISTERED SURVEYOR N# 2766
 RESIDENT DIVISION DEPUTY DIRECTOR
 DATE: *March 4, 1963*

THIS IMPROVEMENT HAS BEEN DECLARED A LIMITED
 ACCESS HIGHWAY FROM STATION 64+00 TO
 STATION 415+00 BY ACTION OF THE DIRECTOR
 OF HIGHWAYS AND RECORDED IN VOLUME 47
 PAGE 620, OF THE DIRECTORS JOURNAL PURSUANT
 TO LAW.

NOTE:
 THIS PLAT INCLUDES AND SUPERSEDES PARTS OF THE
 LOCATION PLAN FOR GUE-40-(18.83-22.90), S.H. 1
 SEC. K (PT) AS RECORDED IN PLAT BOOK 10, PAGE 34,
 & GUE-40-22.89 AS RECORDED IN PLAT BOOK 10,
 PAGE 36, OF THE GUERNSEY COUNTY PLAT RECORDS.

MONUMENT ASSEMBLY SR 513

MONUMENTS SHALL BE SET AT THE FOLLOWING LOCATIONS ON THE SURVEY	
P.C.	18+50.13
P.O.C.	24+00
P.T.	29+60.43
P.O.T.	34+75
P.C.	39+78.20
P.O.C.	48+25
P.T.	56+57.54

MONUMENTS SHALL BE SET AT THE FOLLOWING LOCATIONS ON THE SURVEY	
P.O.T.	300+00
P.O.T.	307+00
P.O.T.	315+00
P.C.	321+64.55
P.O.C.	328+00
P.T.	335+04.55
P.O.T.	343+50
P.C.	351+48.63
P.O.C.	358+00
P.O.C.	365+00
P.O.C.	372+00
P.O.C.	380+00
P.T.	386+77.69
P.O.T.	394+00
P.O.T.	401+00
P.O.T.	408+00
P.O.T.	415+00

RAMP "C" CURVE DATA	
P.I.	9+09.14
Δ	6° 16' 05"
Dc	1' 30"
R	3819.72
L	417.87
T	209.14
E	5.72

RAMP "D" CURVE DATA	
P.I.	9+25.92
Δ	13° 46' 14"
Dc	2° 30'
R	2291.83
L	550.82
T	276.74
E	16.65

SURVEY CURVE DATA	
P.I.	328+34.74
Δ	3° 21' 00"
Dc	0° 15'
R	22918.31
L	1340.00'
T	670.19'
E	9.80'

SURVEY CURVE DATA	
P.I.	369+27.24
Δ	17° 35' 43"
Dc	0° 30'
R	11459.16'
L	3529.06'
T	1778.61'
E	137.21'

SR 513 RELOC. CURVE DATA	
P.I.	49+86.20
Δ	7° 46' 07"
Dc	4° 45'
R	1206.23'
L	1679.34'
T	1008.00'
E	365.73'

TR 35 RELOC. CURVE DATA	
P.I.	34+09.96
Δ	9° 52' 20"
Dc	5° 00'
R	1145.92'
L	197.44'
T	98.97'
E	4.27'

RAMP "A" CURVE DATA	
P.I.	16+50.01
Δ	1° 30' 00"
Dc	0° 30'
R	11459.16'
L	300.00'
T	150.01'
E	1.03'

RAMP "B" CURVE DATA	
P.I.	8+14.78
Δ	9° 25' 20"
Dc	1° 30'
R	3819.72'
L	628.15'
T	314.78'
E	12.95'

■ MONUMENT SYMBOL
 ● MONUMENT ASSEMBLY SYMBOL